

Bakeware 8 Non Stick Aluminized Steel Strap Bread Loaf Pan for Industrial Commercial Use

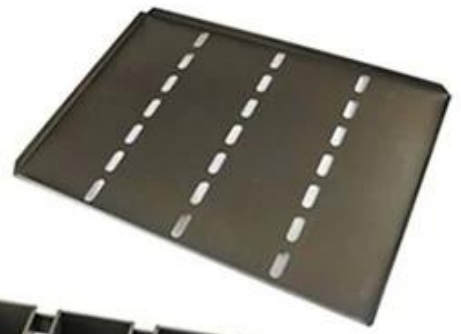
bakeware aluminized steel 8

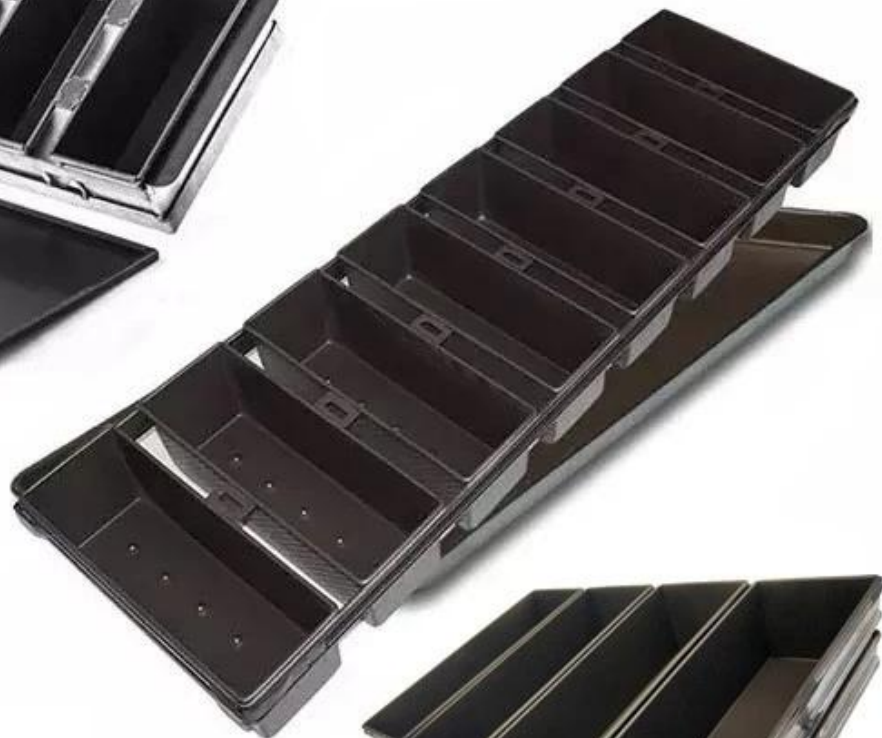
1. 08/1.0/1.2
2. 3/4/5/6/8
3. PTFE/
4. 15 ODM&OEM

Bakeware aluminized 8

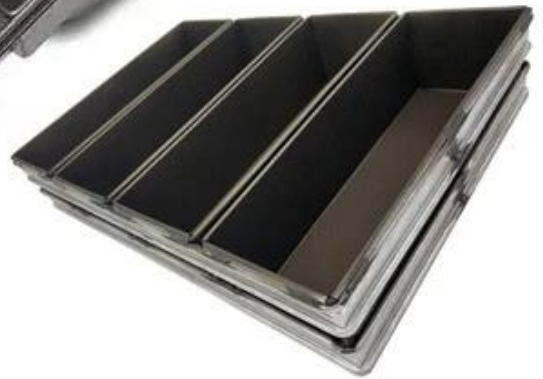
More Customized Strap Loaf Pans from Tsingbuy







Customized shape
Customized size
Rack matched





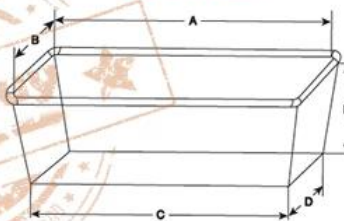
The key specifications of custom made strap loaf baking pans

FOR ORDERING TIN SETS

PLEASE NOTE:

1. The dimensions of a single mould (A, B, C, D, H)
2. The number of moulds in a tin set
3. Type of the frame - Projecting (with handles) or Closed (adjacent) frame
4. Outside dimensions of the frame
5. Oven rack dimensions: (X, Y, Z)
6. Runner (shelve) size in mm
7. Type of coating: no coating, PFA, FEP, Silicone, blackened outside

COATINGS

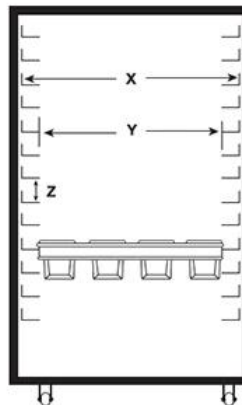


Dimensions of the mould:

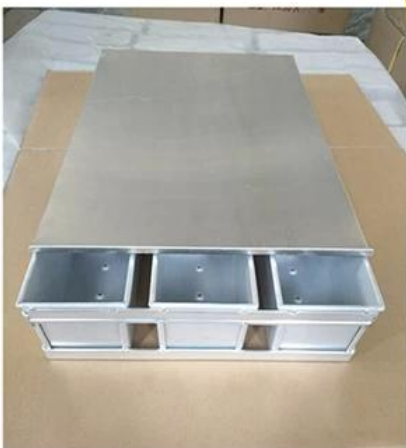
- A = length of the top (inside)
- B = width of the top (inside)
- C = length of the bottom (outside)
- D = width of the bottom (outside)
- H = height (inside)

Dimensions of the rack:

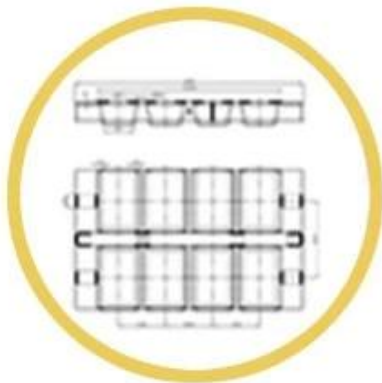
- X = width of the oven rack
- Y = free opening between the runners (shelves)
- Z = distance between the runners (shelves)



Cases of Custom Made Strap Loaf Pans



Procedures for custom made loaf baking pans



1. DRAWING



2. DESIGN



3. PRODUCT



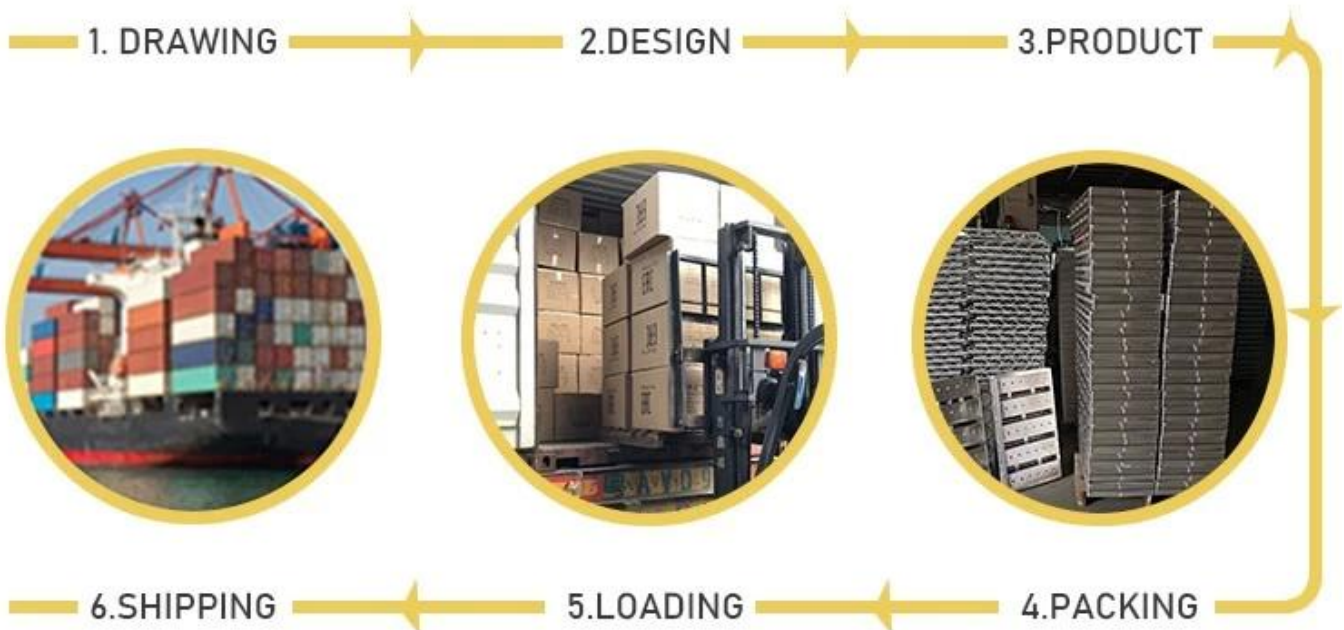
6. SHIPPING



5. LOADING



4. PACKING



Single Loaf Pan



natural surface



corrugated



full perforation



nonstick



corrugated



golden color



holes at bottom



full perforation



custom size







歡迎參觀 [Tsingbuy bakeware manufacturer](#) 專業生產各種bakeware 產品，包括 蛋糕 模具， 麵包 模具， loaf 模具， 各種烤盤 等 產品， 價格公道 品質優良， 歡迎 垂詢 洽談 Welcom to consulttimeus. at any

