

4 Strap Non Stick Loaf Baking Pan

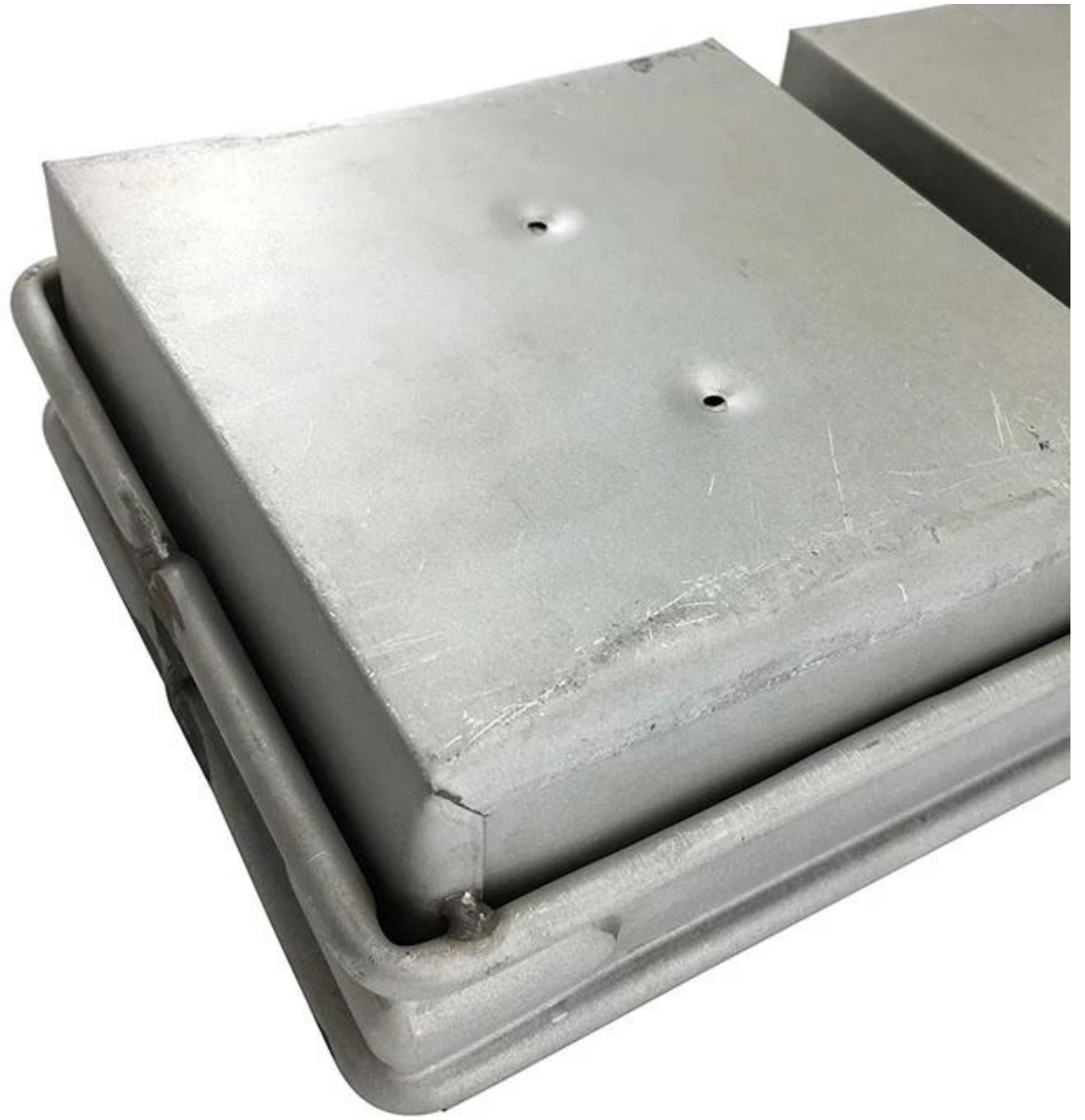
Strap 4 Strap Non Stick Loaf Baking Baking Pan

1. high quality, non-stick, easy to clean, and durable.
2. Perfect for baking bread, rolls, and other loaf-shaped items.
3. The non-stick coating ensures easy removal of baked goods.
4. The 4 straps are designed to hold the pan together for easy storage and transport.
5. Pan Loaf Strap is a great addition to your kitchen.
6. Tsingbuy [4 Strap Non Stick Loaf Baking Pan](#) 12 pieces.









歡迎各界人士垂詢洽購

Tsingbuy [www.tsingbuy.com](#) 15 年 專業製造各類
ODM & OEM 鋁合金產品 歡迎各界人士垂詢洽購
Bakeware 鋁合金產品 歡迎各界人士垂詢洽購



Regular Specification of Single Loaf Bread Baking Pan

Model	Dough Weight	Size		Weight	Thickness
		Upper	Bottom		
TSTP036	250g	164x94 mm	158x87 mm	77 mm	1.0 mm
TSTP037	300g	175x100 mm	173x98 mm	100 mm	1.0 mm
TSTP038	385g	217x94 mm	211x88 mm	77 mm	1.0 mm
TSTP039	450g	197x106 mm	186x101 mm	110 mm	1.0 mm
TSTP040	600g	309x91 mm	300x84 mm	107 mm	1.0 mm
TSTP041	750g	316x100 mm	305x93 mm	116 mm	1.0 mm
TSTP042	900g	327x106 mm	316x100 mm	122 mm	1.0 mm
TSTP043	1000g	327x121 mm	312x119 mm	120 mm	1.0 mm
TSTP044	1200g	370x120 mm	361x116 mm	125 mm	1.0 mm
TSTP045	1500g	450x123 mm	447x120 mm	130 mm	1.0 mm



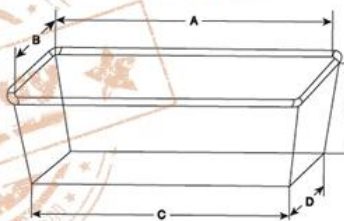
The key specifications of custom made strap loaf baking pans

FOR ORDERING TIN SETS

PLEASE NOTE:

1. The dimensions of a single mould (A, B, C, D, H)
2. The number of moulds in a tin set
3. Type of the frame - Projecting (with handles) or Closed (adjacent) frame
4. Outside dimensions of the frame
5. Oven rack dimensions: (X, Y, Z)
6. Runner (shelve) size in mm
7. Type of coating: no coating, PFA, FEP, Silicone, blackened outside

COATINGS

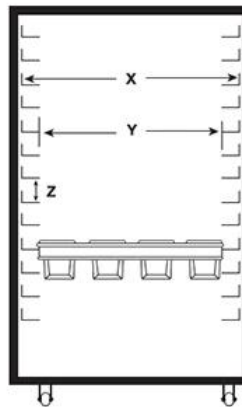


Dimensions of the mould:

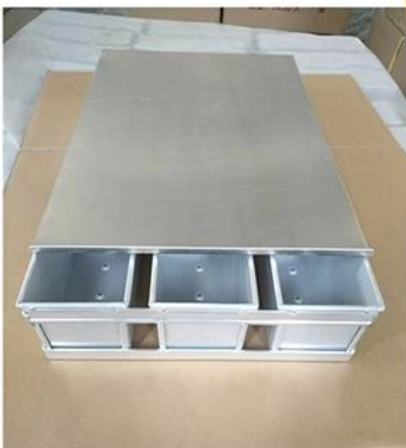
- A = length of the top (inside)
- B = width of the top (inside)
- C = length of the bottom (outside)
- D = width of the bottom (outside)
- H = height (inside)

Dimensions of the rack:

- X = width of the oven rack
- Y = free opening between the runners (shelves)
- Z = distance between the runners (shelves)



Cases of Custom Made Strap Loaf Pans





Lid

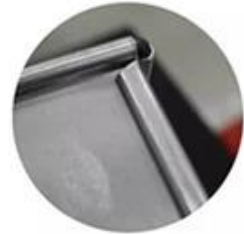


Bottom corner

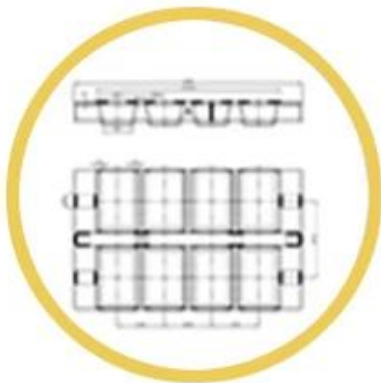


Holes at bottom

wire in rim
curling edge



Procedures for custom made loaf baking pans



1. DRAWING



2. DESIGN



3. PRODUCT



6. SHIPPING



5. LOADING



4. PACKING

- PRODUCT DISPLAY -





