

Aluminum Non Stick Bread Loaf Pan 190/210/250/300/385/450g Pullman Loaf Pan

- 1. Thickness 1.0mm
- 2. Material: Aluminum
- 3. Surface: Non-stick coating
- 4. Dimensions: 190/210/250/300/385/450g
- 5. Capacity: 1 loaf
- 6. Features: Easy to clean, durable
- 7. ODM & OEM services available
- 8. Minimum order quantity: 12 pieces

Aluminum Non Stick Bread Loaf Pan







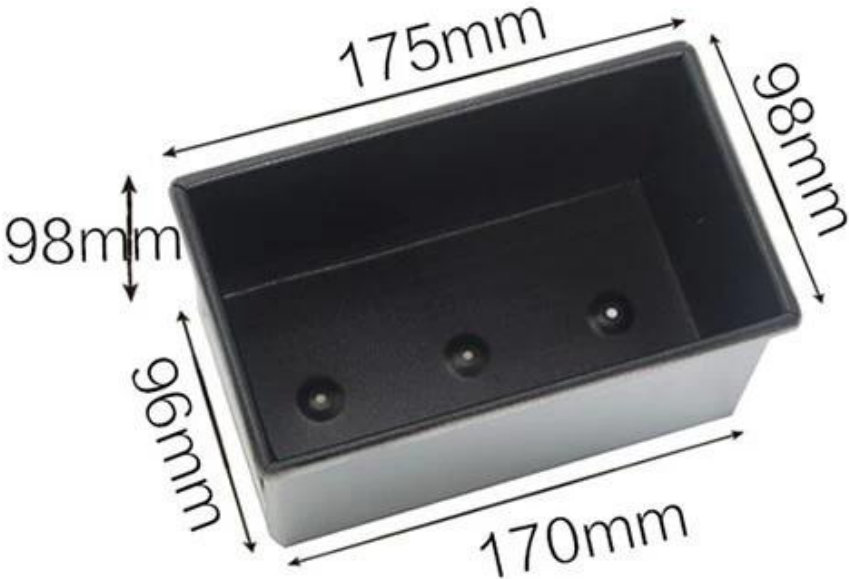
190g non stick loaf pan



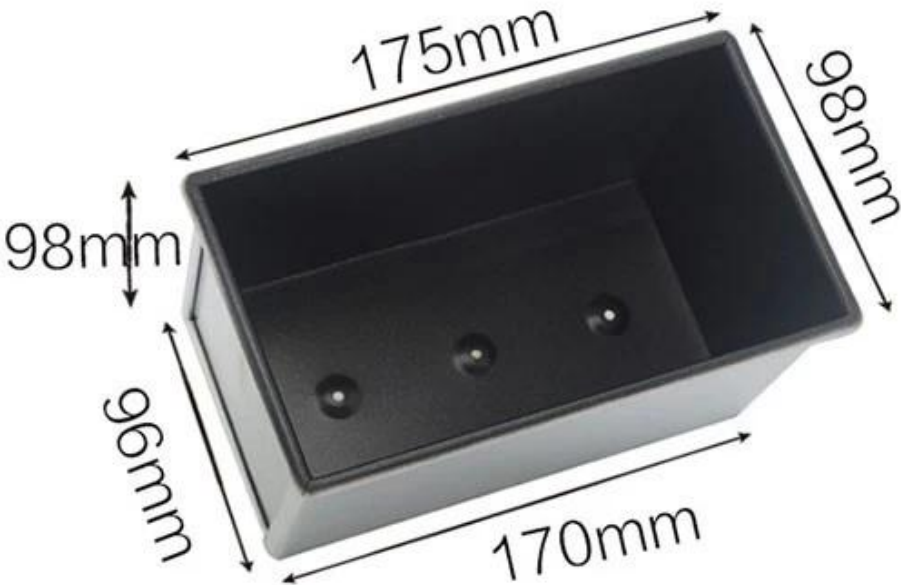
210g non stick loaf pan



250g non stick loaf pan



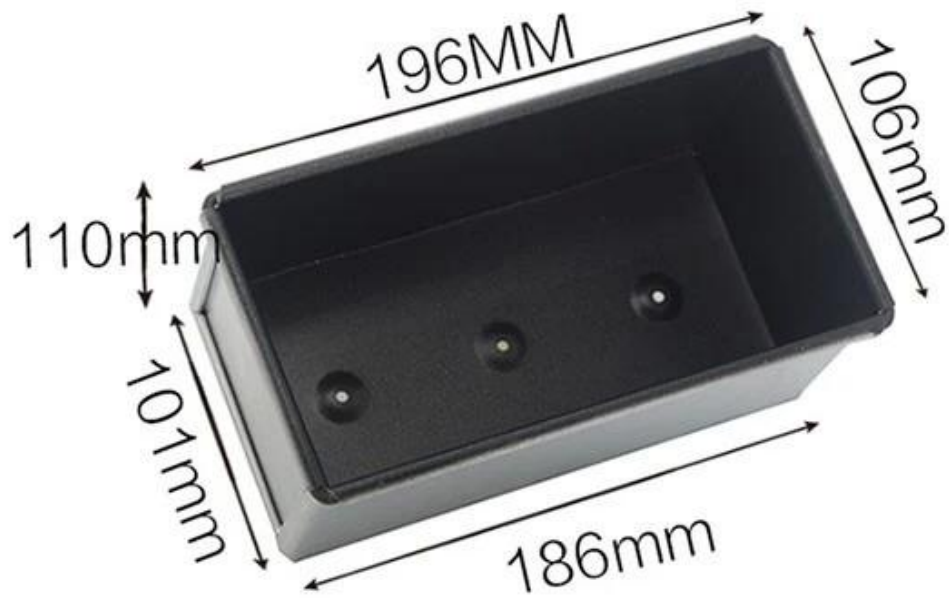
300g non stick loaf pan



385g non stick loaf pan



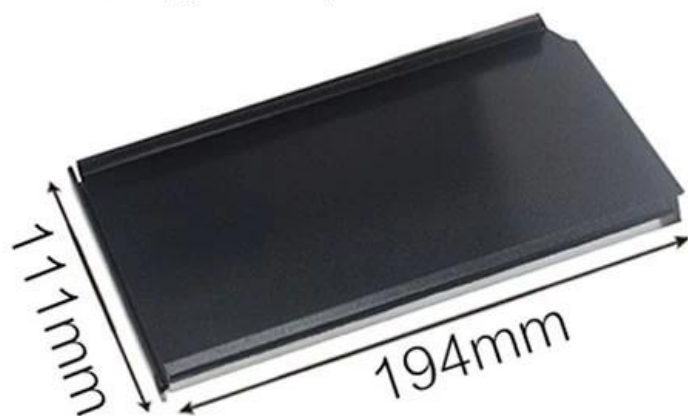
450g non stick loaf pan



Cover for 250g loaf pan



Cover for 300g loaf pan



Cover for 450g loaf pan



我們提供各種尺寸及厚度的鋁箔盤及紙箔盤

歡迎垂詢，請電：02-2652-1111。

我們提供各種尺寸及厚度的鋁箔盤及紙箔盤 s 歡迎垂詢 請電：02-2652-1111

我們提供各種尺寸及厚度的鋁箔盤及紙箔盤

我們提供各種尺寸及厚度的鋁箔盤及紙箔盤

我們提供各種尺寸及厚度的鋁箔盤及紙箔盤

我們提供各種尺寸及厚度的鋁箔盤及紙箔盤

我們提供各種尺寸及厚度的鋁箔盤及紙箔盤

我們提供各種尺寸及厚度的鋁箔盤及紙箔盤

我們提供各種尺寸及厚度的鋁箔盤及紙箔盤

customized single loaf pan



Teflon coating

Silicone coating



Material:

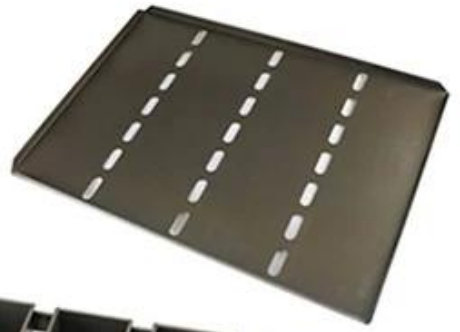
Aluminum alloy

Aluminized steel

12

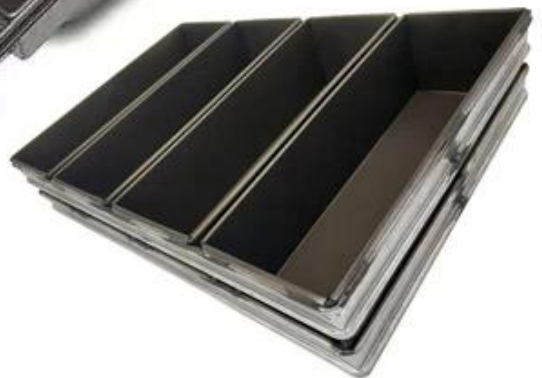
More Customized Strap Loaf Pans from Tsingbuy



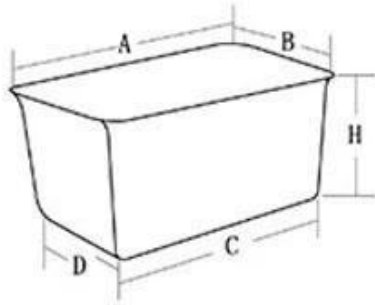




Customized shape
Customized size
Rack matched

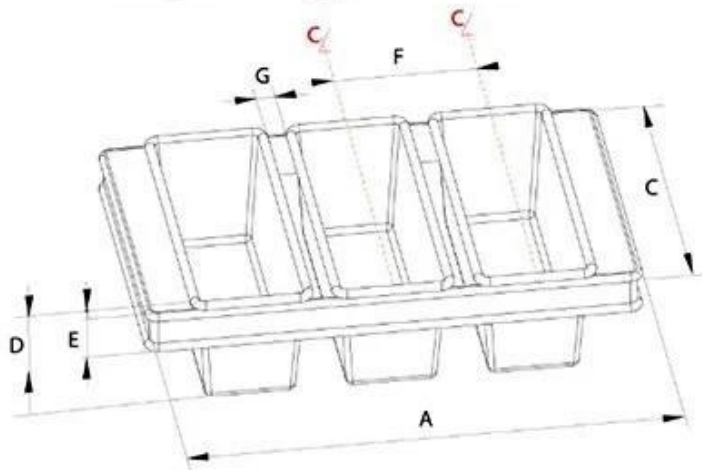


Customized Single Loaf Pan



- A. Top length of the item
- B. Top width of the item
- C. Bottom length of the item
- D. Bottom width of the item
- H. Height

Customized Strapped Loaf Pan Sets



- A. Overall Length
- C. Overall Width
- D. Depth
- E. Frame Height
- F. Center-to-center
- G. Pan Distance



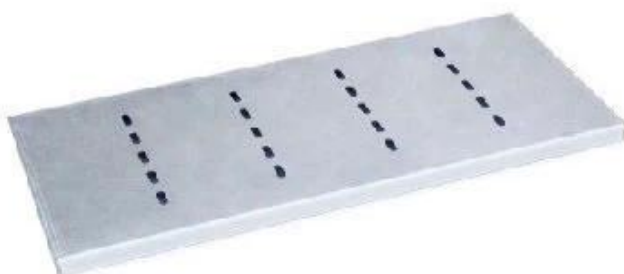
Flat handle



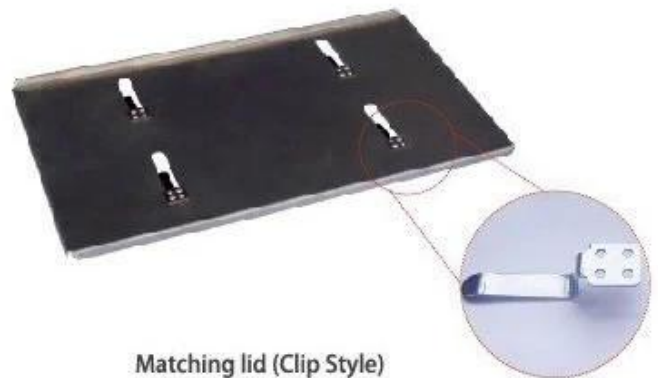
Frame handle



no handle



Matching lid (Drop Style)



Matching lid (Clip Style)

□□□□□□□□

ODM&OEM

□□□□□□□□□□



Loaf Pan

Tsingbuy Industry Limited



