

Aluminum / Alusteel Non Stick Bread Loaf Pan







Black PTFE Non Stick
Long Bread Loaf Pan
top 254x84x55mm
bottom 250x80mm



Aluminum alloy
Light in weight
Fast heat conductivity
Non stick coated
Easy to demould
Easy for cleanup



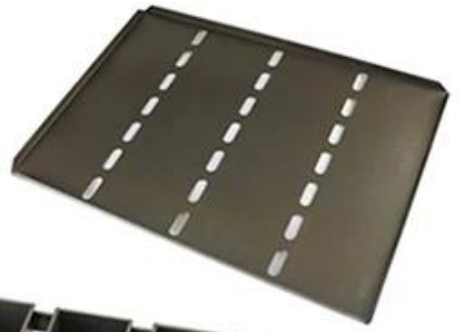


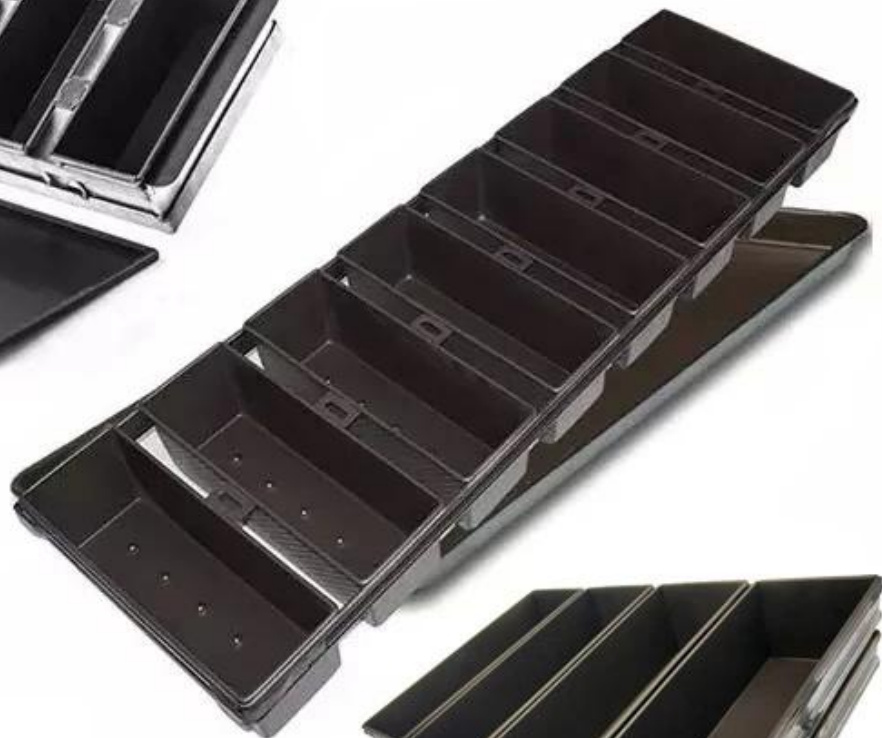
customized single loaf pan



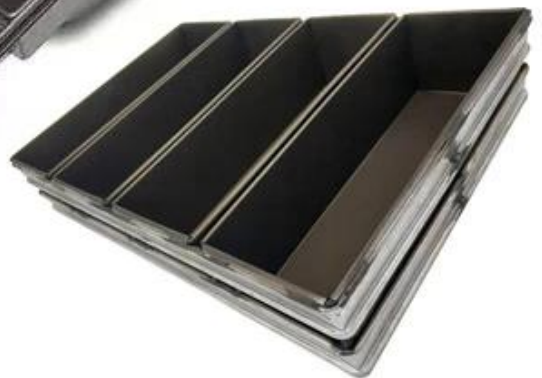
More Customized Strap Loaf Pans from Tsingbuy



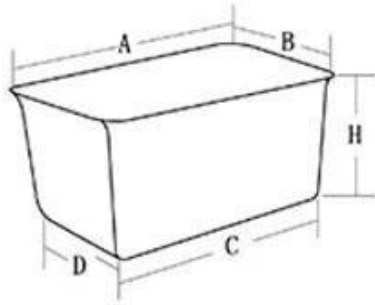




Customized shape
Customized size
Rack matched

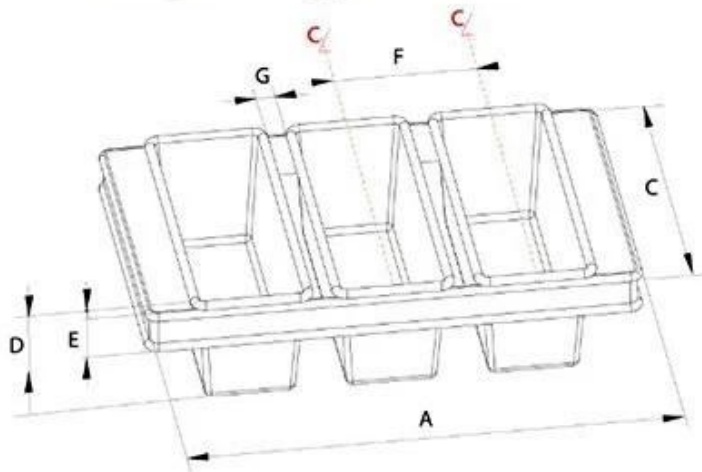


Customized Single Loaf Pan



- A. Top length of the item
- B. Top width of the item
- C. Bottom length of the item
- D. Bottom width of the item
- H. Height

Customized Strapped Loaf Pan Sets



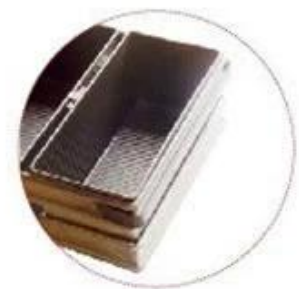
- A. Overall Length
- C. Overall Width
- D. Depth
- E. Frame Height
- F. Center-to-center
- G. Pan Distance



Flat handle



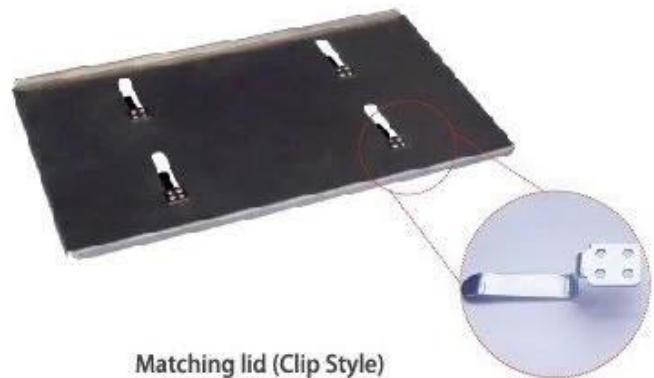
Frame handle



no handle



Matching lid (Drop Style)



Matching lid (Clip Style)

XXXXXXXXXX

Tsingbuy [XXXXXXXXXXXXXXXXXXXXXXXXXX](#) XXXXXXXXXXXXXXXXXXXX XXXXXXXXXXXX XXXXXXXXXXXXXXXXXXXX XXXXXXXXXXXXXXXXXXXX
XXXXXXXXXX XXX XXXXXXXXXXXXXXXXXXXX XXXXXXXXXXXXXXXXXXXX XX XXXXXXXXXXXX ODM&OEM
XX
XX



Loaf Pan

Tsingbuy Industry Limited



