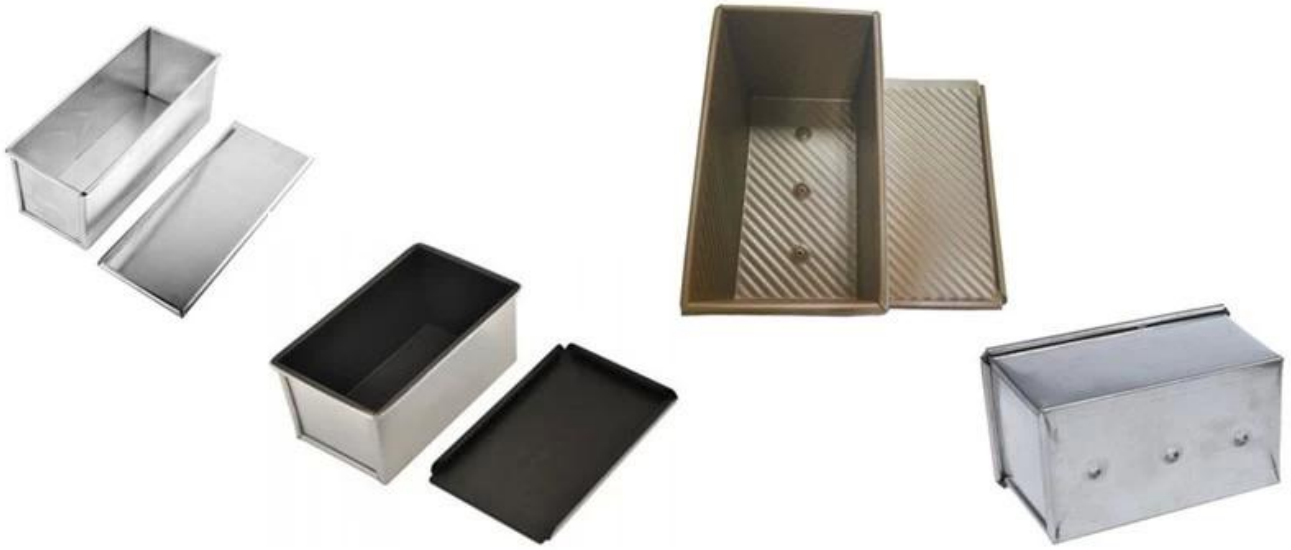




## Single Bread Loaf Pan

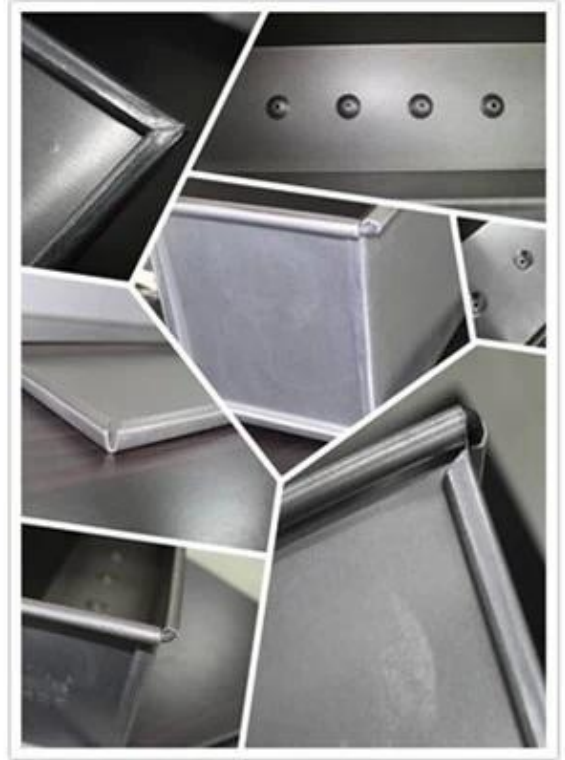
---



## Strap Loaf Pan

---





Loaf Pan (Aluminum, Non-stick)

Model	Dough Weight	Size		Weight	Thickness
		Upper	Bottom		
TSTP036	250g	164x94 mm	158x87 mm	77 mm	1.0 mm
TSTP037	300g	175x100 mm	173x98 mm	100 mm	1.0 mm
TSTP038	385g	217x94 mm	211x88 mm	77 mm	1.0 mm
TSTP039	450g	197x106 mm	186x101 mm	110 mm	1.0 mm
TSTP040	600g	309x91 mm	300x84 mm	107 mm	1.0 mm
TSTP041	750g	316x100 mm	305x93 mm	116 mm	1.0 mm
TSTP042	900g	327x106 mm	316x100 mm	122 mm	1.0 mm
TSTP043	1000g	327x121 mm	312x119 mm	120 mm	1.0 mm
TSTP044	1200g	370x120 mm	361x116 mm	125 mm	1.0 mm
TSTP045	1500g	450x123 mm	447x120 mm	130 mm	1.0 mm





3.

4.

1.

2.

3.  Neutral

4.   
()

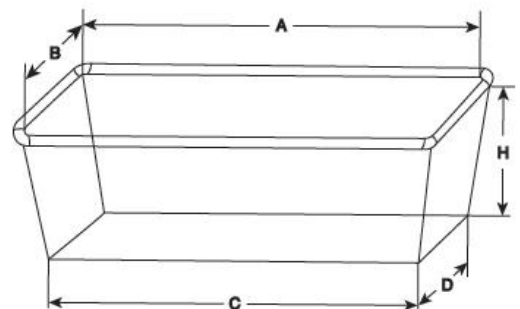
<input type="text"/>	<input type="text"/>	<input type="text"/>	<input type="text"/> Fluted
<input type="text"/>	TSTP	TSTP	TSTP
<input type="text"/>	<input type="text"/> / <input type="text"/>	<input type="text"/> / <input type="text"/>	<input type="text"/> / <input type="text"/>
<input type="text"/>	<input type="text"/>	<input type="text"/>	<input type="text"/>
<input type="text"/>	0.8 / 1.0mm / 1.2mm / 1.5mm	1.0 / 1.2 / 1.5mm	1.0 / 1.2 / 1.5mm
<input type="text"/>	Non- / <input type="text"/> / <input type="text"/>	Non- / <input type="text"/> / <input type="text"/>	Non- / <input type="text"/> / <input type="text"/>
<input type="text"/>	<input type="text"/> / <input type="text"/>	<input type="text"/>	<input type="text"/> / <input type="text"/>
MOQ	50pcs	30sets	50pcs
<input type="text"/>	20pcs / <input type="text"/>	5set / <input type="text"/>	10pcs / <input type="text"/>

## COATINGS

### FOR ORDERING TIN SETS

#### PLEASE NOTE:

1. The dimensions of a single mould (A, B, C, D, H)
2. The number of moulds in a tin set
3. Type of the frame - Projecting (with handles) or Closed (adjacent) frame
4. Outside dimensions of the frame
5. Oven rack dimensions: (X, Y, Z)
6. Runner (shelve) size in mm
7. Type of coating: no coating, PFA, FEP, Silicone, blackened outside

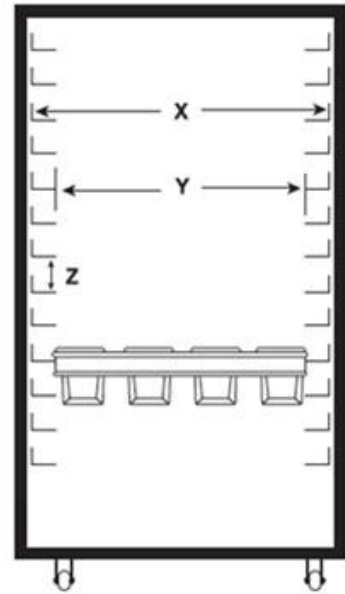


**Dimensions of the mould:**

- A = length of the top (inside)
- B = width of the top (inside)
- C = length of the bottom (outside)
- D = width of the bottom (outside)
- H = height (inside)

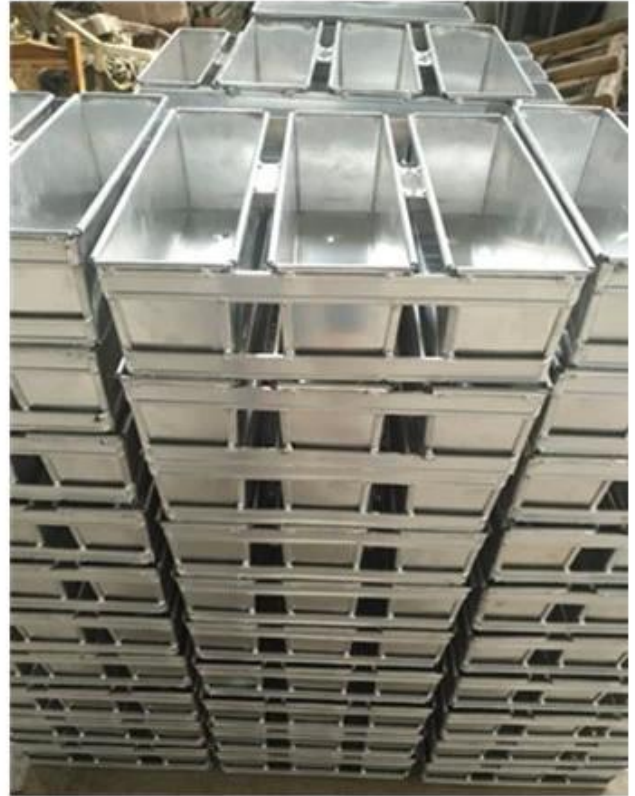
**Dimensions of the rack:**

- X = width of the oven rack
- Y = free opening between the runners (shelves)
- Z = distance between the runners (shelves)





# APPLICATION



# Customer Visiting



- PRODUCT DISPLAY -











## • OUR SERVICE •

With more than 10 years focusing on research, development and manufacturer of bakeware, Tsingbuy Industry limited has been becoming one of the leading manufacturers in commercial and home bakerware industry in China. Our products mainly cover sheet pan, multi-mould pan, baguette tray, cake tin, Pullman pan, Pizza series, Banneton and other bakeware

In order to meet different customer requirements, customized mould-open baking tray is becoming one of our best-selling pointing. Our products have been exported to Europe, American, Australia/New Zealand, the Middle East, Asia, Africa and other areas. We look forward to joining hands with more and more customers in the world to enjoy the charm of qualified bakeware





Zoe Lee

TSINGBUY INDUSTRY LIMITED FACTORY PLANET  
OEM & ODM - Bakeware and Customization

Tel	+86 186 1186 6087	+86 0755-85234769
Email	marketing@tsingbuy.com	
Skype	+86 186 1186 6087	
Whatsapp	+86 186 1186 6087	
Web	www.chinabakeware.com	
ADD	2 Floor B1 Building, No 22 Dafu Industry park, Guanlan, Longhua District, Shenzhen, China 518110	

□□□□□□□□□□□□□□□□

