

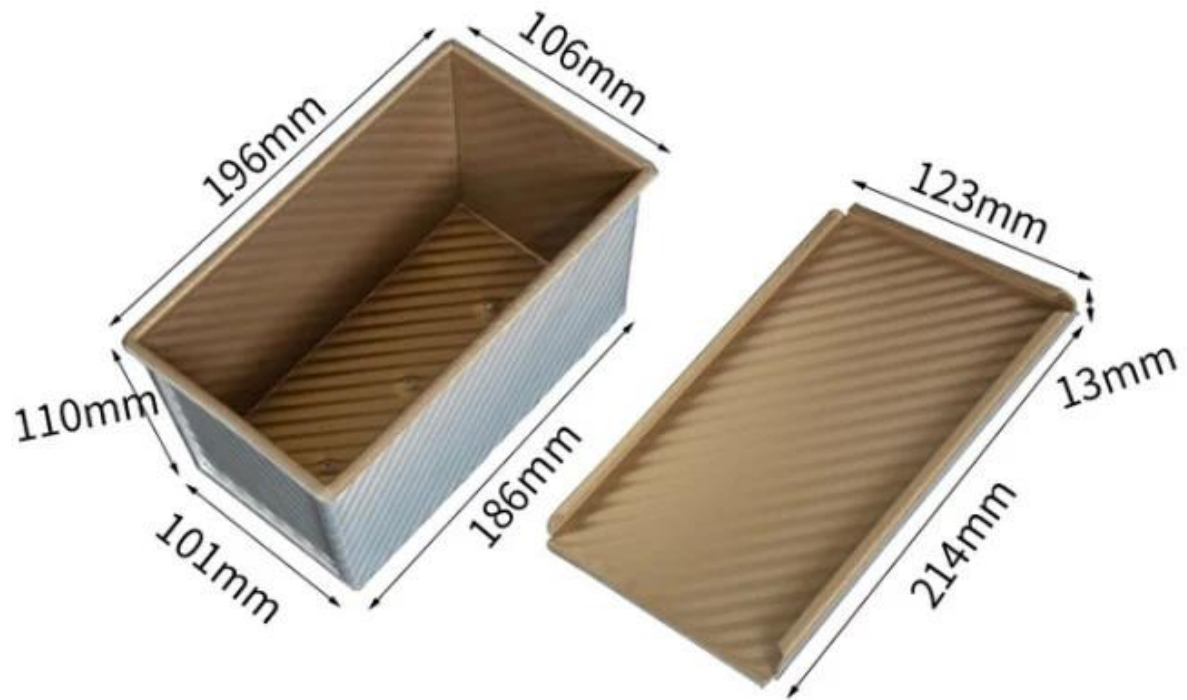
450 . .  
 -  
**450g nonstick** . . .  
 .  
 1. 1.0 , .  
 non-stick .  
 3. .  
 4. .  
 5. .  
 6. .  
 7. ODM & OEM . [. . .](#).  
 8. Tsingbuy . . . . . 12 .  
**450** . . . . .

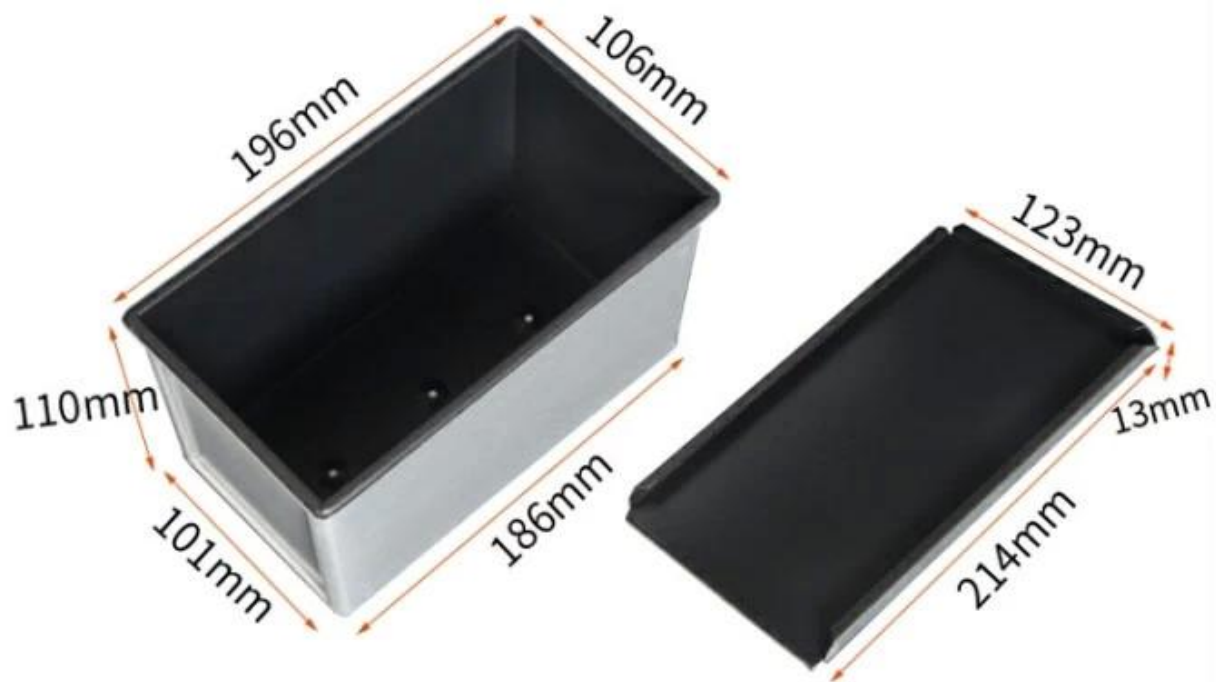
# 450G Aluminum Pullpan Loaf Pan Black/Golden Corrugated Nonstick



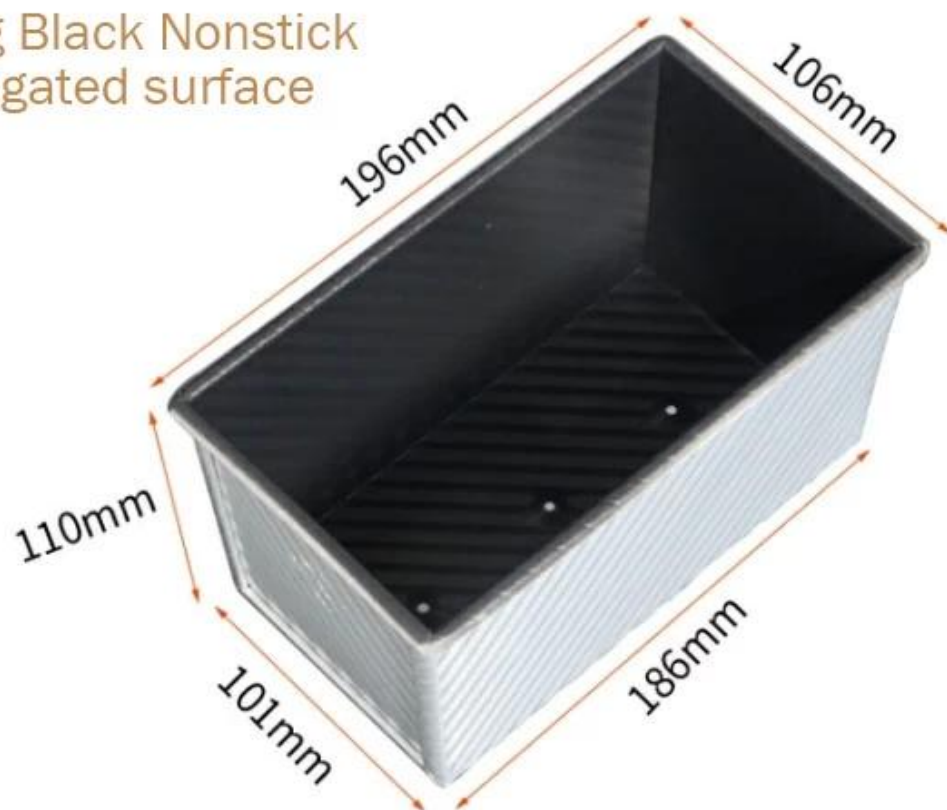
# Product Specification

---





450g Black Nonstick  
corrugated surface





Good Heat Conductivity, baking evenly



Holes at the bottom for better baking effect



# Loaf Pans in Application









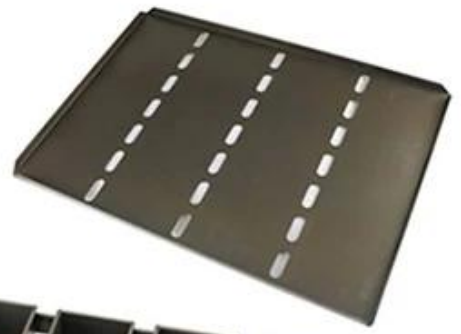
Rolled edge with reinforced wire





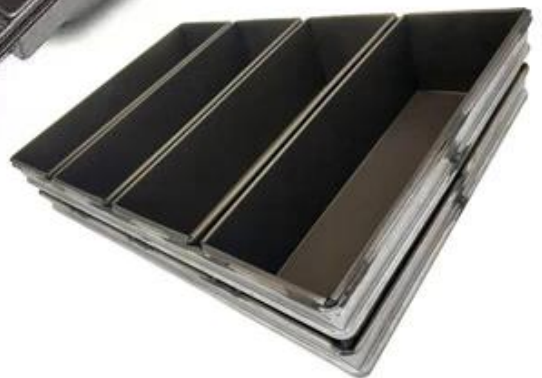
## More Customized Strap Loaf Pans from Tsingbuy



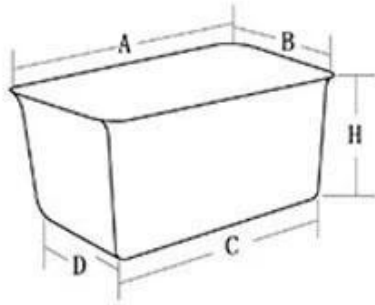




Customized shape  
Customized size  
Rack matched

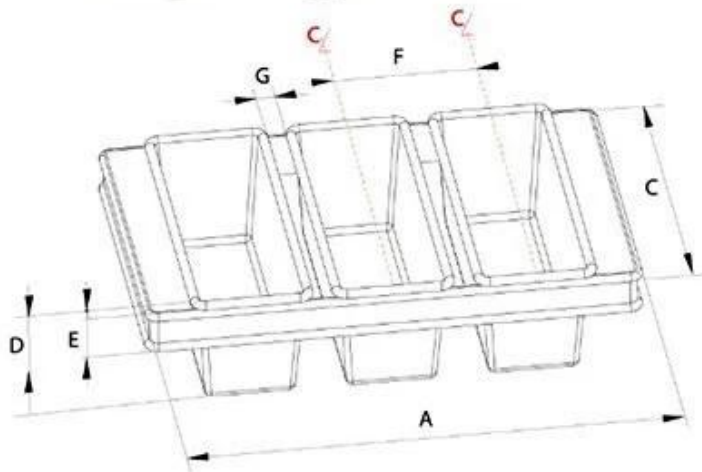


## Customized Single Loaf Pan



- A. Top length of the item
- B. Top width of the item
- C. Bottom length of the item
- D. Bottom width of the item
- H. Height

## Customized Strapped Loaf Pan Sets



- A. Overall Length
- C. Overall Width
- D. Depth
- E. Frame Height
- F. Center-to-center
- G. Pan Distance



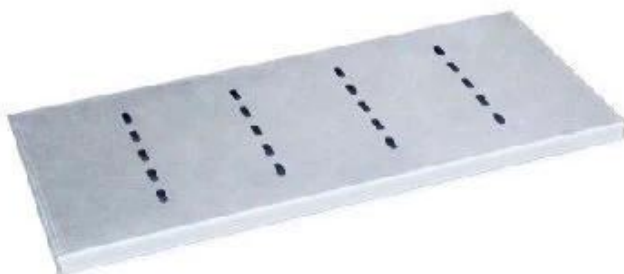
Flat handle



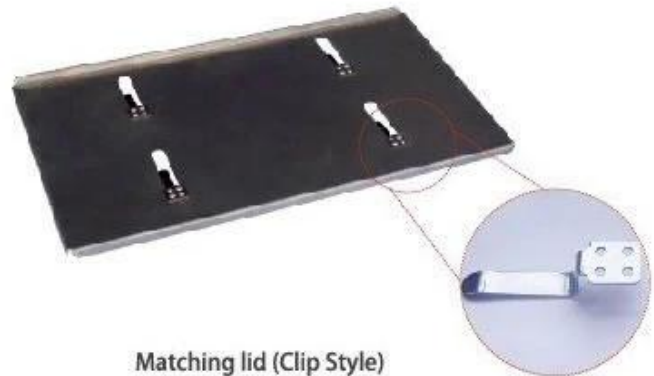
Frame handle



no handle



Matching lid (Drop Style)



Matching lid (Clip Style)





## Loaf Pan

Tsingbuy Industry Limited

