

# Custom Made 4 Cavities Strap Non Stick Loaf Bread Baking Pan for Industrial Use

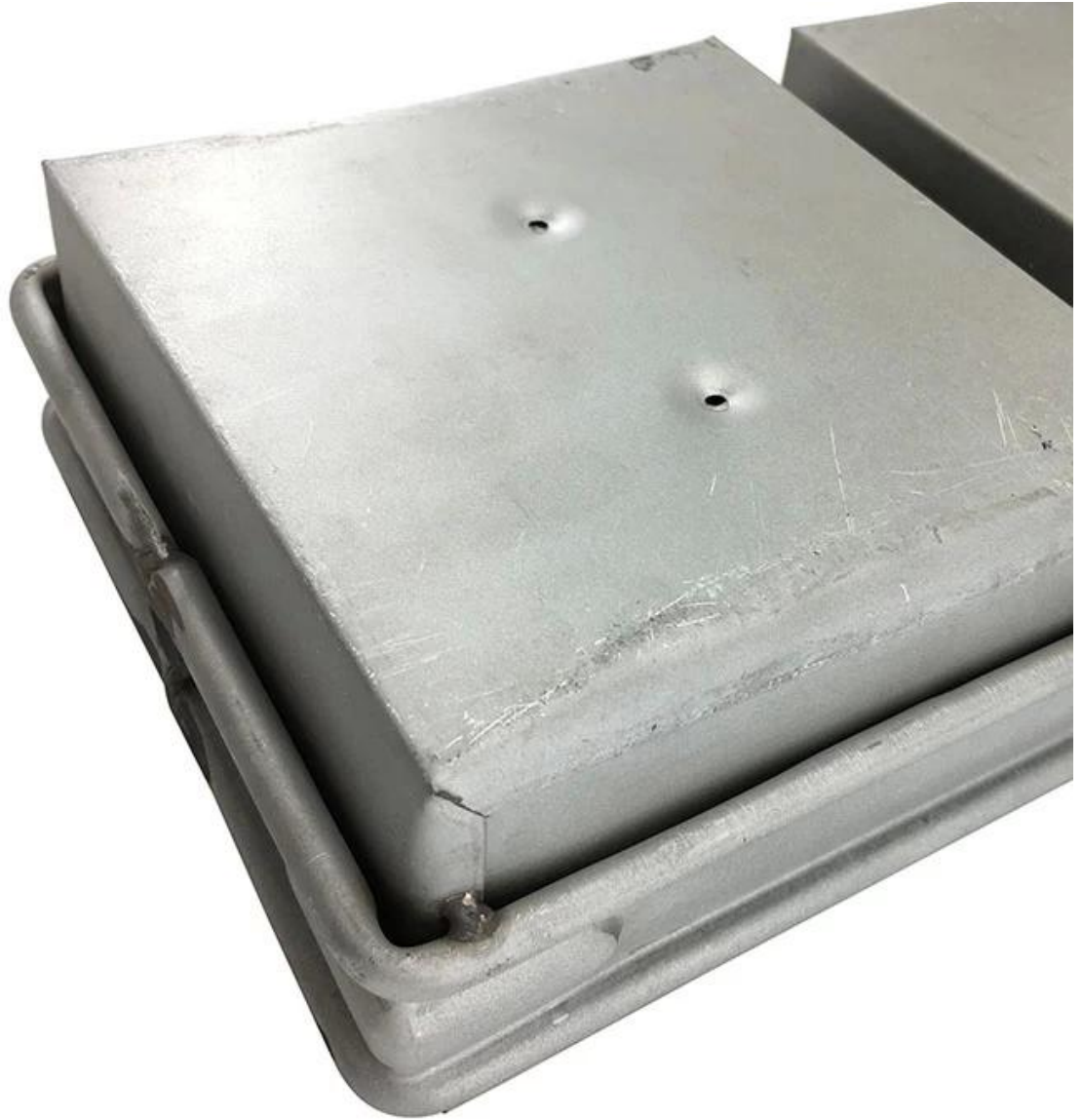
## Main features of custom 4 strap non stick loaf bread baking pan

1. Made of high qualified aluminized steel material, good heat conductivity, food-safe and strong durability.
2. Folded construction with reinforced wire support in each pocket, stable and not warp being heated
3. Extra reinforced bar around all pockets provides superior strength and make the whole body more durable
4. The custom design in size makes them suitable for machinery food-production lines, available in oven configurations for greater efficiency
5. The customized strap loaf pan has simple-to-use drop-on cover which can be buckled to be fixed and also has reinforced bars.
6. Tsingbuy [strap loaf pan factory](#) has more than 12 years experience and ensures you high-qualified product with excellent performance.









### **More type of custom 4 strap non stick loaf bread baking pan**

Tsingbuy [bread pan manufacturer](#) has been engaged in commercial baking pan design and manufacturing for over 15 years. We have experienced many successful and pleasant ODM&OEM cases with our clients from America, Europe, Australia, Middle East etc. Here are some more cases of custom bakeware strap loaf bread baking pan for your reference. If you are looking for such kinds of strap loaf bread baking pan, please feel free to contact us.





### Regular Specification of Single Loaf Bread Baking Pan

Model	Dough Weight	Size		Thickness
		Upper	Bottom	
TSTP036	250g	164x94 mm	158x87 mm	77 mm
TSTP037	300g	175x100 mm	173x98 mm	100 mm
TSTP038	385g	217x94 mm	211x88 mm	77 mm
TSTP039	450g	197x106 mm	186x101 mm	110 mm
TSTP040	600g	309x91 mm	300x84 mm	107 mm
TSTP041	750g	316x100 mm	305x93 mm	116 mm
TSTP042	900g	327x106 mm	316x100 mm	122 mm
TSTP043	1000g	327x121 mm	312x119 mm	120 mm
TSTP044	1200g	370x120 mm	361x116 mm	125 mm
TSTP045	1500g	450x123 mm	447x120 mm	130 mm



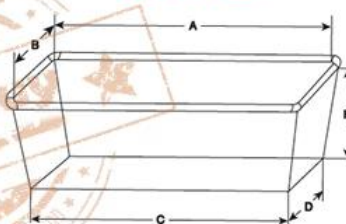
## The key specifications of custom made strap loaf baking pans

### FOR ORDERING TIN SETS

#### PLEASE NOTE:

1. The dimensions of a single mould (A, B, C, D, H)
2. The number of moulds in a tin set
3. Type of the frame - Projecting (with handles) or Closed (adjacent) frame
4. Outside dimensions of the frame
5. Oven rack dimensions: (X, Y, Z)
6. Runner (shelve) size in mm
7. Type of coating: no coating, PFA, FEP, Silicone, blackened outside

### COATINGS

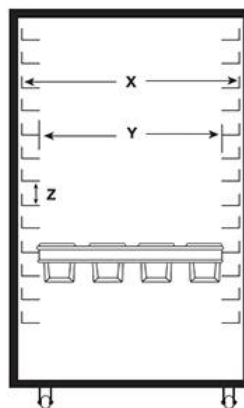


#### Dimensions of the mould:

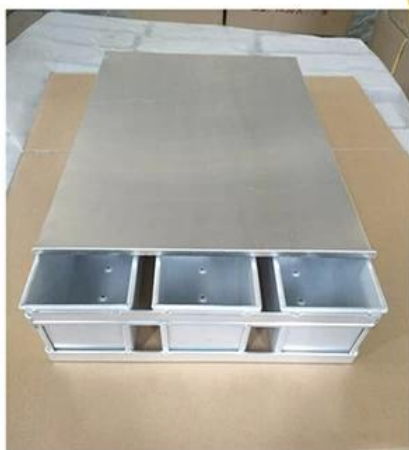
- A = length of the top (inside)
- B = width of the top (inside)
- C = length of the bottom (outside)
- D = width of the bottom (outside)
- H = height (inside)

#### Dimensions of the rack:

- X = width of the oven rack
- Y = free opening between the runners (shelves)
- Z = distance between the runners (shelves)



### Cases of Custom Made Strap Loaf Pans

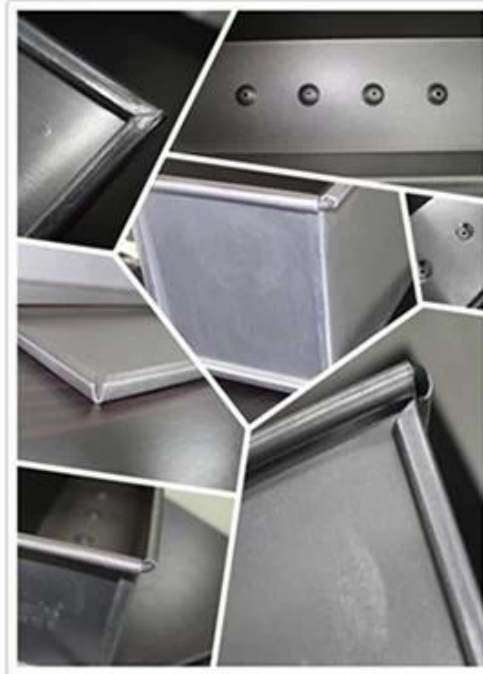




Lid



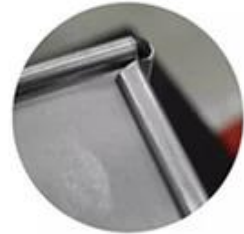
Bottom corner



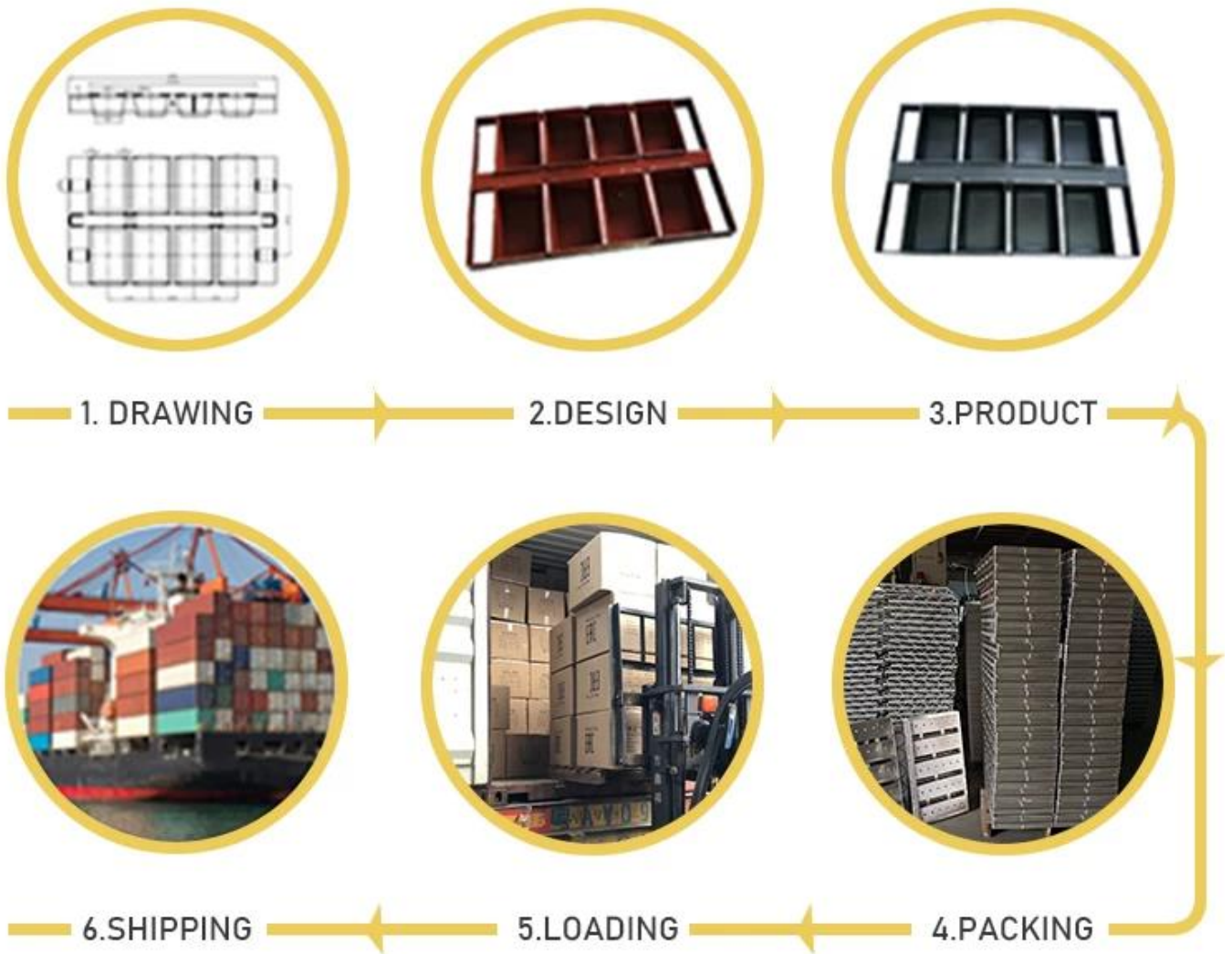
Holes at bottom



wire in rim  
curling edge



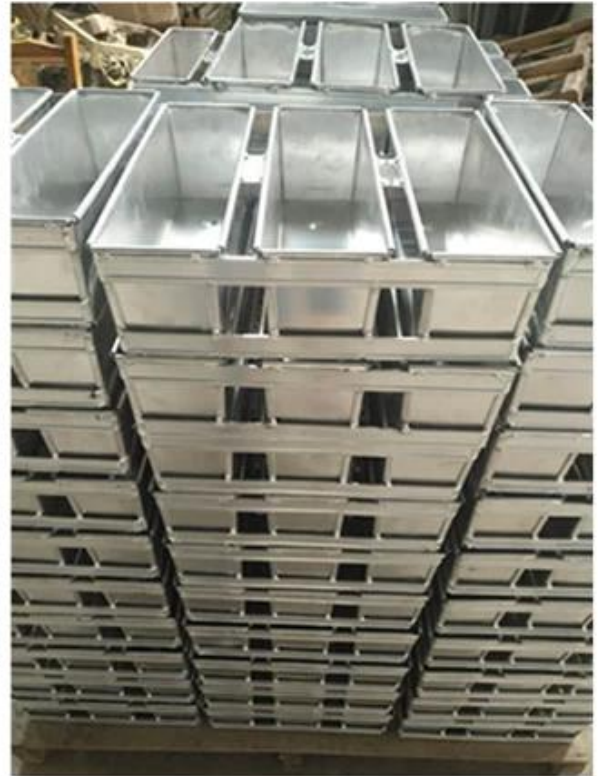
## Procedures for custom made loaf baking pans







## Custom Made Strap Loaf Pan Used with Bakery Trolley



### Factory Show

Well equipped with CNC machines, punching, cutting, moulding machines, our annual production ability has been over 150 million US-dollars. Besides [aluminum loaf pans wholesale](#), we have several other main product series of commercial bakeware, including baking sheet pan, baguette pan, industry cup tray, muffin pan, cupcake tray, cake pan, bakery trolley etc.

## - PRODUCT DISPLAY -





