

Aluminized Steel Loaf Pan for Industrial Use

Main features of aluminized steel loaf pan for industrial commercial use

- 1. High quality aluminized steel materials, good heat conductivity, food-safe and strong durability.
- 2. Folded construction with reinforced wire support in each pocket, stable and not warp being heated
- 3. Extra reinforced bar around all pockets provides superior strength and make the whole body more durable
- 4. The scientific design in size makes them suitable for food factory production, available in oven configurations for greater efficiency
- 5. The customized strap loaf pan has simple-to-use cover which also has a reinforced hemmed edge.
- 6. Tsingbuy [strap loaf pan manufacturer](#) has more than 12 years experience and ensures you high-qualified product with excellent performance.

| | | |
|--------------------|---|---|
| Product name | 4 strap loaf pan | With lid or no is optional Customized size is welcomed |
| Model number | TSTP065 | |
| External size | 600*400*100 mm | |
| Internal size | Upper 370*100mm Bottom 365*100mm Height 100mm | |
| Cover Thickness | 2.5mm alusteel | |
| Internal thickness | 0.7 mm alusteel | |
| Surface finish | Teflon Coated | |

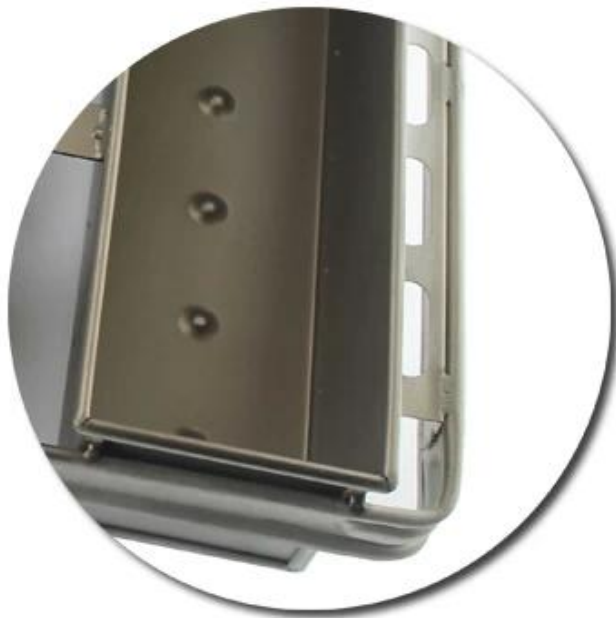
Product images for non-stick aluminized steel strap loaf pan





Perforated Bottom
diamond quality
non-stick surface

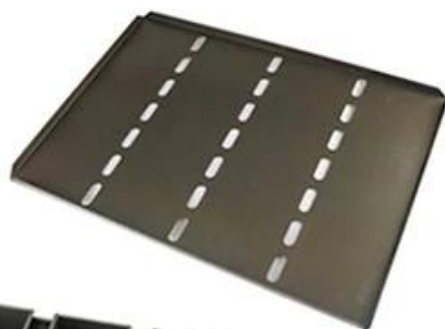
strong and firm handle
reinforced strengthening bar



More type of strap loaf pan for your information

More Customized Strap Loaf Pans from Tsingbuy







Customized shape
Customized size
Rack matched

Here are some pictures of single loaf pan from Tsingbuy [toast baking pan supplier](#).

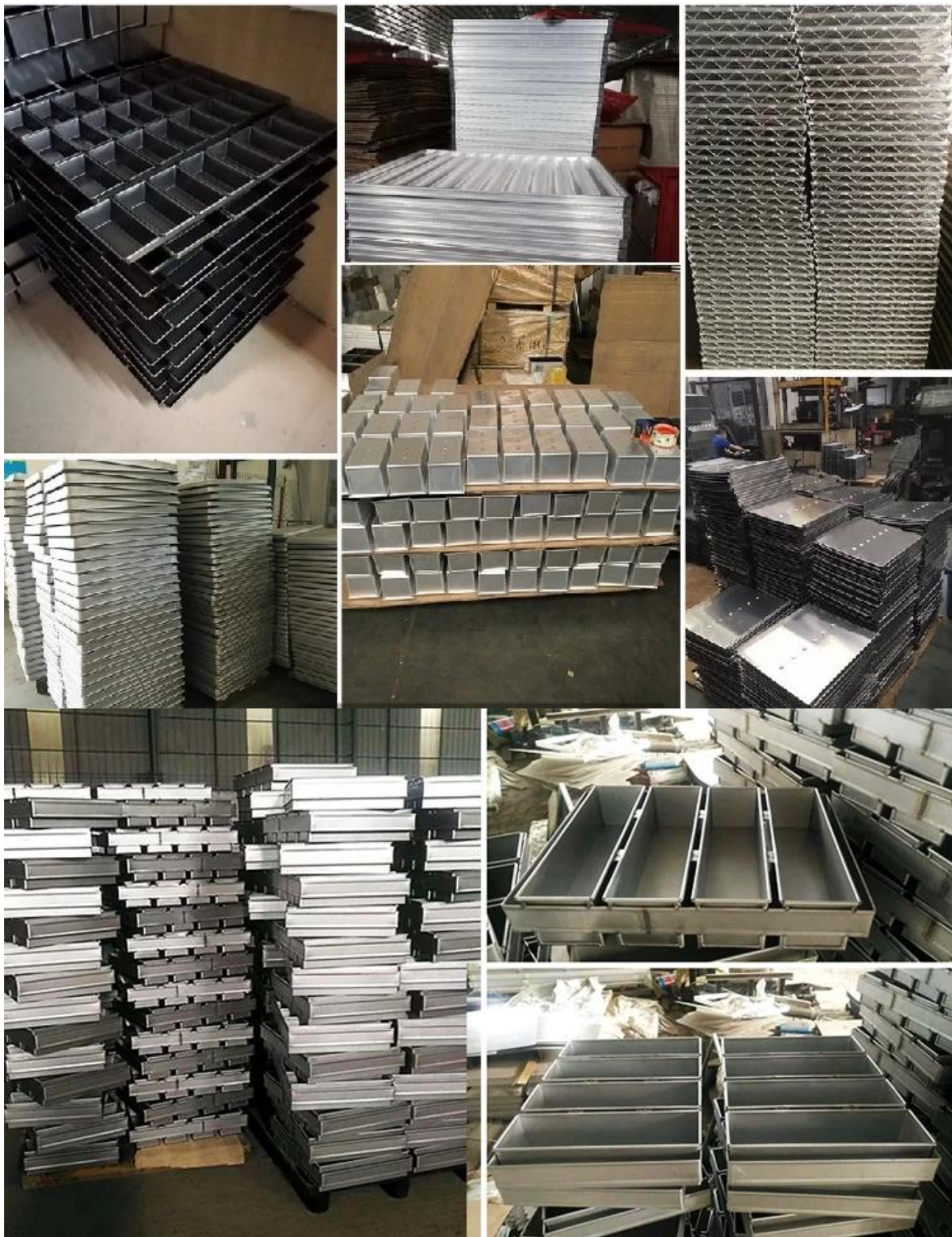
customized single loaf pan





Strap loaf pan factory pictures

Here are some pictures of [custom size toast loaf baking pan](#) large quantity orders.



Contact us



Zoe Lee

TSINGBUY INDUSTRY LIMITED FACTORY PLANET
OEM & ODM - Bakeware and Customization



Tel

+86 186 1186 6087

+86 0755-85234769



Email

marketing@tsingbuy.com



Skype

+86 186 1186 6087



Whatsapp

+86 186 1186 6087



Web

www.chinabakeware.com



ADD

2 Floor B1 Building, No 22 Dafu Industry
park, Guanlan, Longhua District, Shenzhen, China 518110