

Custom Made Industrial Strap Bread & Loaf Pans Toast Pan Bread Tin Bakeware for Bakery Restaurant Food Factory etc

Main features of custom made industrial strap bread & bread loaf pan toast pan commercial bakeware

1. This custom made commercial bread baking pan is capable of holding 4/5/6/7/8 or even more loaves. This baking pan allows baking multiple loaves to sell or serve quickly while still maintaining the quality of baking. Whether you need to make your signature dinner loaves or baking for commercial selling, this bread pan is a good choice to help you finish your baking job easily.
2. The bread loaf pans are manufactured from 0.7/0.8/1.0/1.2/1.5mm aluminized steel with double folded corners, The edge of each pan is fitted with a 5mm diameter rim wire. The frames are manufactured of 1.2mm aluminized steel for super support and durability. The surface of bread pans are treated with non stick coating and fluted finish, coming with steam holes. Not suitable for Gluten-free mixtures.
3. Professional ODM&OEM service with over 15 years experience: it is available in a range of sizes, in various configurations to suit all industrial, commercial or domestic ovens.
4. Tsingbuy [bread pan manufacturer](#) provides "design-sample confirmation-batch production" service with more than 15 years of ODM&OEM experience.

Product images of custom made industrial strap bread & bread loaf pan toast pan commercial bakeware

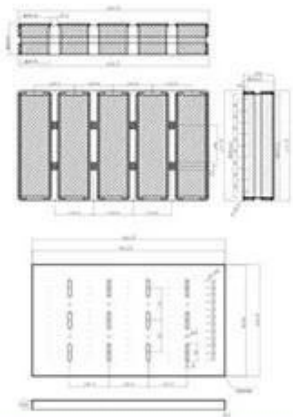
Tsingbuy is professional in making both single loaf pan and strap loaf pans. Here we share some models of strap loaf pan for your reference. Most of the strap loaf pans are custom designed according to requirements.

Customize
Strap Loaf Pan



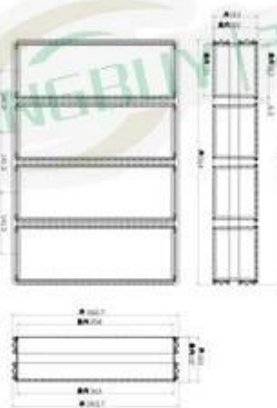
5-strap Alusteel Loaf Pan with Lid

Model	TSTP25
External size	663x385mm
Single box	356x100x105mm
Thickness	0.7/1.0/2.0mm
Design chart as following	



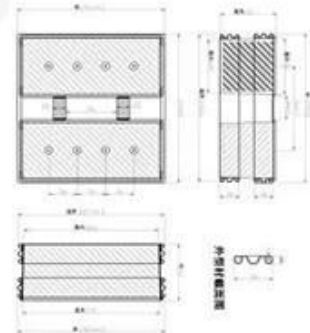
4-strap Alusteel Perforated Loaf Pan

Model	TSTP26
External size	565x383mm
Single box	360x123x102mm
Thickness	0.6/1.0mm
Design chart as following	



2-strap Alusteel Non-stick Loaf Pan

Model	TSTP27
External size	293x290mm
Single box	270x110x110mm
Thickness	0.7/1.0/2.3mm
Design chart as following	



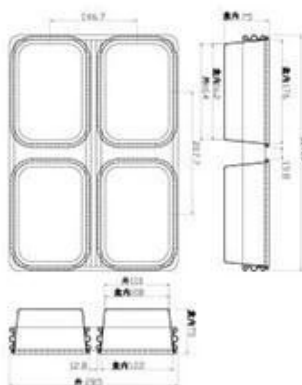
**Customize
Strap Loaf Pan**



Alusteel Farmhouse Loaf Pan

Model	TSTP22
External size	400x285mm
Single box	176x122x75mm
Thickness	0.8/1.0mm

Design chart as following



5-strap Alusteel Perforated Loaf Pan

Model	TSTP23
External size	654x226.5mm
Single box	203x95x63.5mm
Thickness	0.8/1.0/2.3mm

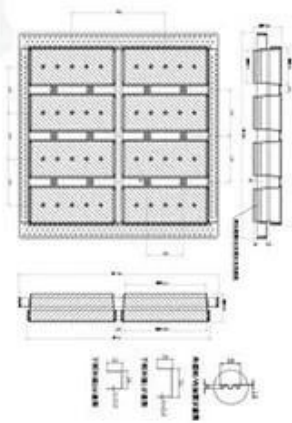
Design chart as following



8-strap Alusteel Corrugated Loaf Pan

Model	TSTP24
External size	800x711mm
Single box	325x140x108mm
Thickness	0.7/1.0/2.0/2.3mm

Design chart as following



8 Strap Loaf Pan

Model	TSTP28
External Size	600X800 mm
Internal Size	Upper 370X110 mm
	Bottom 368X108mm
	Height 90 mm
Frame Thickness	1.2 mm stainless steel
Internal Thickness	1.0 mm aluminum alloy



10 Strap Loaf Pan

Model	TSTP29
External Size	600X400 mm
Internal Size	Upper 267X107 mm
	Bottom 257X97 mm
	Height 80 mm
Frame Thickness	1.0 mm alusteel
Internal Thickness	0.6 mm alusteel

5 Strap Loaf Pan

Model	TSTP30
External Size	720X390X158 mm
Internal Size	Upper 370X110 mm
	Bottom 368X108 mm
	Height 83 mm
Frame Thickness	2.0mm aluminum alloy
Internal Thickness	1.0mm aluminum alloy



8 Strap Loaf Pan

Model	TSTP31
External Size	600X800 mm
Internal Size	Upper 370x110 mm
	Bottom 368x108 mm
	Height 83 mm
Frame Thickness	2.5 mm aluminum alloy
Internal Thickness	1.0 mm aluminum alloy

4 Strap Loaf Pan (Aluminized Steel)

Model	TSTP36
External Size	600X400x100 mm
Internal Size	Upper 370x100 mm
	Bottom 365x100 mm
	Height 100 mm
Internal Thickness	0.7 mm alusteel
Cover Thickness	2.5 mm alusteel
Surface Finish	Teflon Coating



7 Strap Loaf Pan (Aluminized Steel)

Model	TSTP37
External Size	580X380X60 mm
Internal Size	370X70X55 mm
Internal Thickness	0.7 mm alusteel
Cover Thickness	2.0mm alusteel
Surface Finish	Teflon Coating

Customized information:

Materials Loaf pan material and cover materials

Thickness Loaf pan/cover

Size 1. External size of the loaf pan
2. The internal size of single loaf pan

Workmanship 1. Strap quantity and spacing size
2. Whether with cover (single cover or overall cover)
3. Surface finish (natural or Non-stick coating)
4. Other requirements

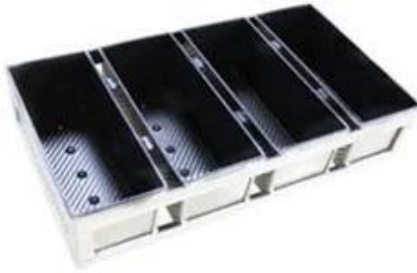
4 Strap Loaf Pan

Model	TSTP32
External Size	600X400 mm
Internal Size	Upper 370X110 mm
	Bottom 368X108mm
	Height 83 mm
Frame Thickness	2.5 mm aluminum alloy
Internal Thickness	1.0 mm aluminum alloy



4 Strap Loaf Pan

Model	TSTP33
External Size	600X400 mm
Internal Size	Upper 370X110 mm
	Bottom 368X108mm
	Height 83 mm
Frame Thickness	5.0 mm aluminum alloy
Internal Thickness	1.0 mm aluminum alloy



5 Strap Pocket Loaf Pan With Cover

Model	TSTP34
External Size	720X385X158 mm
Internal Size	Upper 366X115mm
	Bottom 362X112mm
	Height 140mm
Frame Thickness	2.0mm aluminum alloy
Internal Thickness	1.0mm aluminum alloy
Cover Thickness	2.5mm aluminum alloy

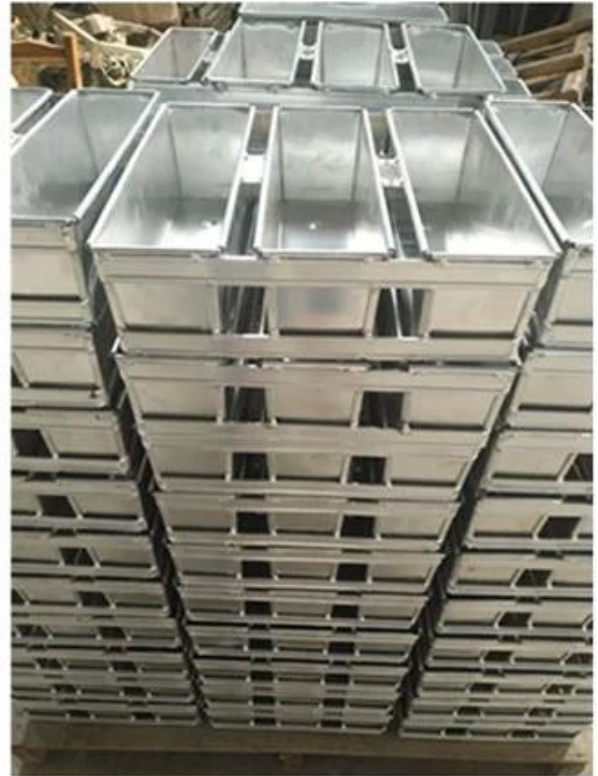


3 Strap Loaf Pan With Cover

Model	TSTP35
External Size	400x275x115mm
Internal Size	Upper 250x110mm
	Bottom 245x105mm
	Height 110 mm
Frame Thickness	2.0 mm aluminum alloy
Internal Thickness	1.0 mm aluminum alloy



**Custom Made
Strap Loaf Pan
Used with
Bakery Trolley**



More types of single bread loaf baking pan for home kitchen, bakery, restaurant etc

Here are some classic models of single loaf bread baking pan from Tsingbuy [bread tin supplier](#).

Single Loaf Pan



natural surface



corrugated



full perforation



nonstick



corrugated



golden color



holes at bottom



full perforation



custom size







Besides industrial strap loaf pan wholesale, Tsingbuy [bread & loaf pans factory](#) also provides custom design and wholesale of other commercial bakeware, such as sheet pans, baguette pans, loaf pans, multi-mould baking pans, bakery trolley, cake pans etc. Welcom to consult us at any time.

