

# Corrugated Pullman Loaf Pan TSTP017-TSTP026

## Main features of corrugated pullman loaf pan TSTP017-TSTP026

### Material - 1.0mm thickness of Aluminum

High quality aluminum alloy material, enough thickness, excellent heat conductivity, good stability, rust-free, durable

### Workcraft - Edge Rolling Design and corrugated surface

Surrounding edges with curling design, smooth and round, comfortable handle, stable structure, easy to take and place. Corrugated and nonstick surface for super conductivity and easy demoulding

### Easy to operate

Folded construction and reinforced hemmed edge are easy to slide on/off, Best for baking perfect quick bread, flawless pound cake,super moist cornbread,classic meatloaf.

### Whether with a lid or not - to make toast of different styles

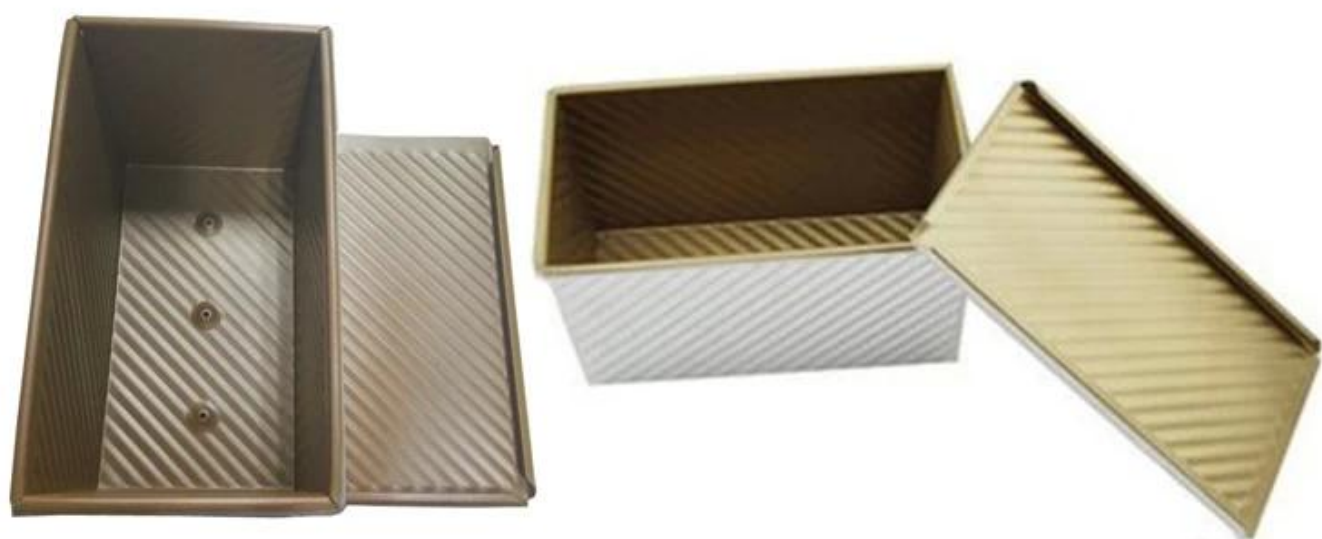
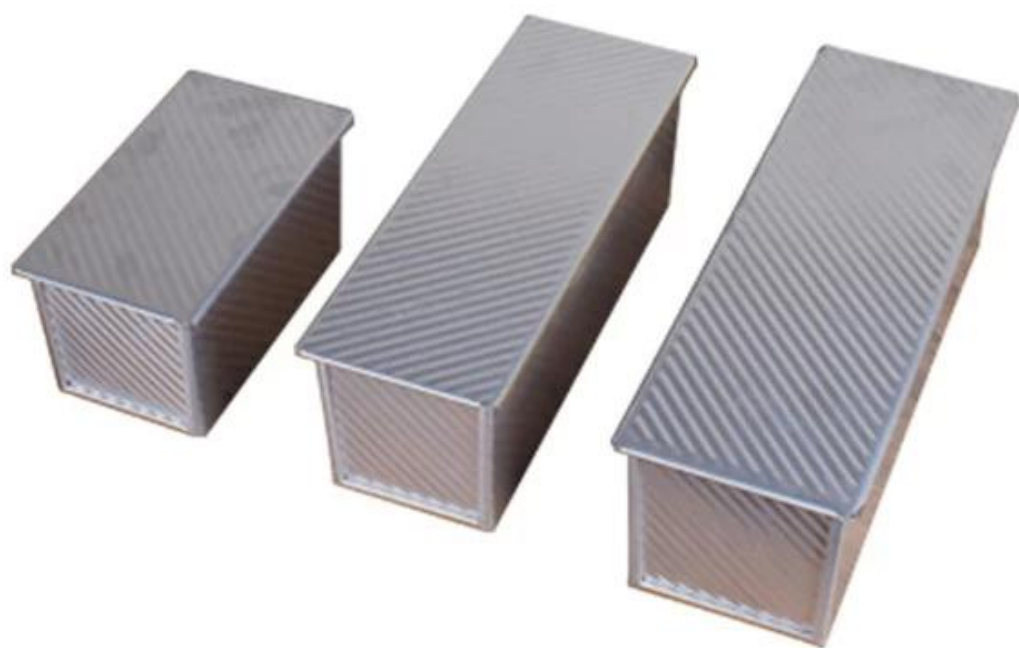
It's made of American toast with a lid. It's flat on all sides. And it's a British toast without a lid, with a protruding peak at the top. Whether you need a lid or not depends on personal preferences.

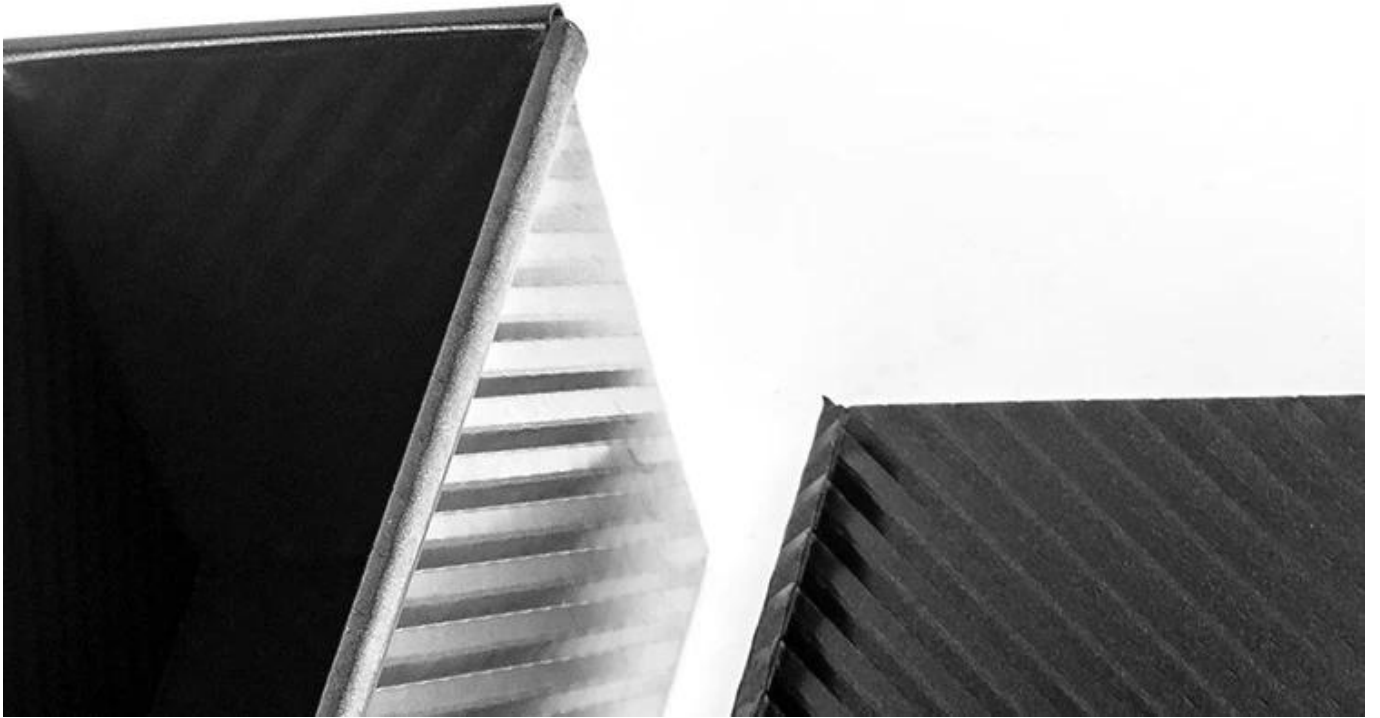
Sizes of corrugated Pullman loaf pan for your options, and customized size is also WELCOMED in Tsingbuy [Pullman loaf pan manufacturer](#)

Model number	Dough weight	Upper size	Bottom size	Height	thickness
TSTP017	250g	164*94mm	158*87mm	77mm	1.0mm
TSTP018	300g	175*100mm	173*98mm	100mm	1.0mm
TSTP019	385g	217*94mm	211*88mm	77mm	1.0mm
TSTP020	450g	197*106mm	186*101mm	110mm	1.0mm
TSTP021	600g	309*91mm	300*84mm	107mm	1.0mm
TSTP022	750g	316*100mm	305*93mm	116mm	1.0mm
TSTP023	900g	327*106mm	316*100mm	122mm	1.0mm
TSTP024	1000g	327*121mm	312*119mm	120mm	1.0mm
TSTP025	1200g	370*120mm	361*116mm	125mm	1.0mm
TSTP026	1500g	450*123mm	447*8120mm	130mm	1.0mm

## Pictures of corrugated pullman loaf pan TSTP017-TSTP026







Related product recommendation: Smooth surface pullman loaf pan from [aluminum loaf pan factory](#)



Customized China loaf pan of a variety patterns from Tsingbuy [China customzied loaf pan supplier](#)

-Non-stick: natural/nocating, teflon coating, silicone coating

-Surface: smooth or corrugated

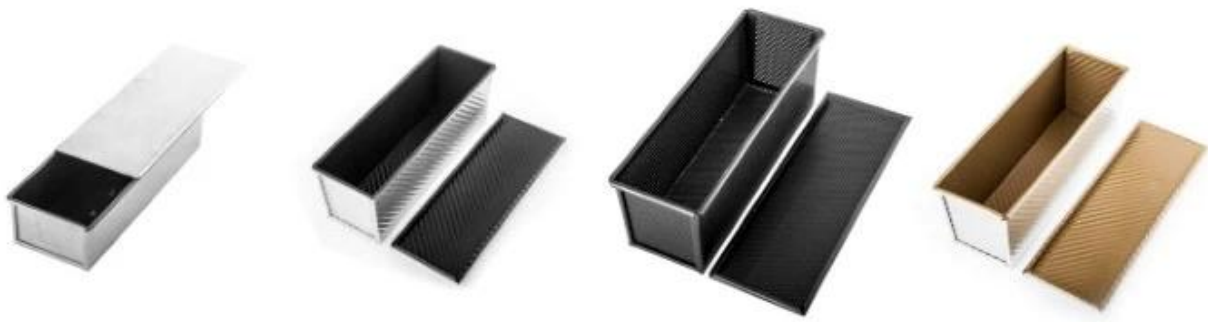
-Bottom: perforated or not

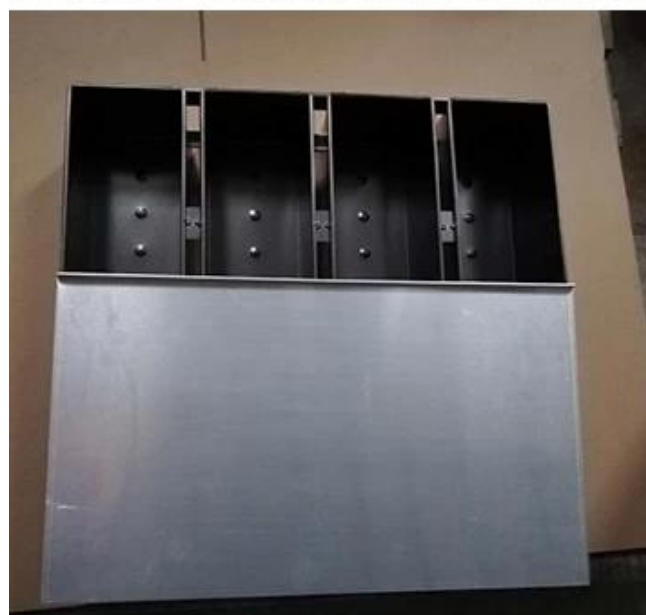
-Lid: with lid or without lid

-Industrial use: single loaf pan or strap loaf pan

-Size: any size and thickness can be customized



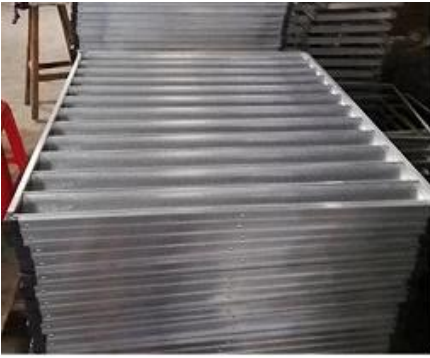






**Factory pictures**







## About us

Tsingbuy is professional China bakeware manufacturer and also an experienced role as strap loaf pan manufacturer China. We have engaged in bakeware for more than 12 years, manufacturing sheet pans, baguette tray, loaf pan Wholesales China, bakery trolley, OEM industry cup tray and various customization bakeware. We also supply other baking related tools, such as banneton baskets, PP baskets, bread lame, baking couche and so on.

## Contact us





