

Personalized Bakeware 8 Cavities Non Stick Aluminized Steel Strap Bread Loaf Pan para sa Pang-industriya na Komersyal Paggamit

Pangunahing tampok ng personalized na bakeware aluminized steel 8 cavities bread loaf baking pan para sa komersyal na pang-industriyang paggamit

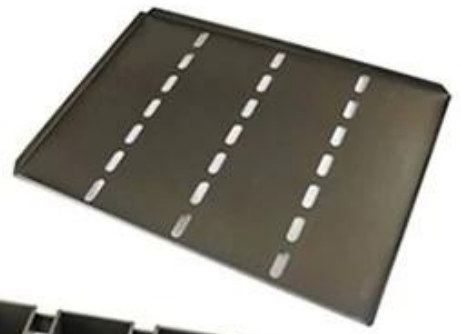
2. May kakayahang of bake 3/4/5/6/8 loaf mabilis habang pa rin pinapanatili ang kalidad ng loaf bread baking.
3. Available in a range of sizes, in configurations to suit all industrial/commercial ovens.
4. Pinahiran may PTFE/Silicone glaze upang matiyak magandang tinapay hitsura, hindi didikit sa kawali. Ang non stick coating ay angkop para contact sa food at may longer-lasting performance. Binabawasan din nito ang langis kapag nagluluto at nagtitipid sa iyong oras sa paglilinis at paggawa.
5. Tsingbuy [tagagawa ng aluminized steel loaf pan](#) nagbibigay ng "design-sample confirmation-batch production" service with more then 15 years of ODM&OEM experience.

Mga larawan ng produkto ng personalized na bakeware aluminized steel 8 cavities bread loaf baking pan para sa komersyal na pang-industriyang paggamit

Tsingbuy ay propesyonal sa paggawa pareho walang asawa tinapay pan at strap tinapay mga kawali. Dito tayo ibahagi ilang mga modelo ng strap loaf pan para sa iyong sanggunian. Karamihan sa mga strap loaf pan ay pasadyang idinisenyo ayon sa mga kinakailangan.

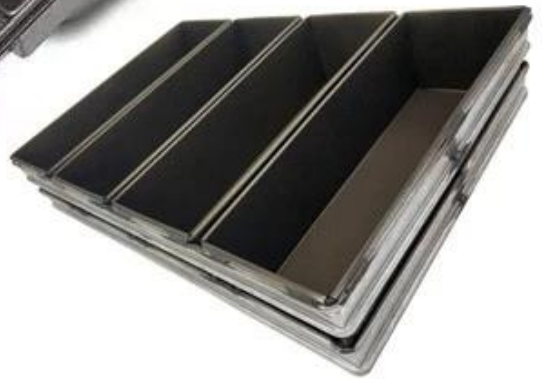
More Customized Strap Loaf Pans from Tsingbuy







Customized shape
Customized size
Rack matched





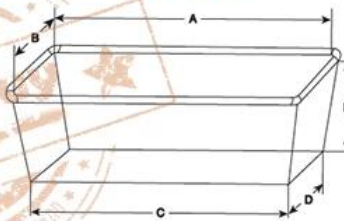
The key specifications of custom made strap loaf baking pans

FOR ORDERING TIN SETS

PLEASE NOTE:

1. The dimensions of a single mould (A, B, C, D, H)
2. The number of moulds in a tin set
3. Type of the frame - Projecting (with handles) or Closed (adjacent) frame
4. Outside dimensions of the frame
5. Oven rack dimensions: (X, Y, Z)
6. Runner (shelve) size in mm
7. Type of coating: no coating, PFA, FEP, Silicone, blackened outside

COATINGS

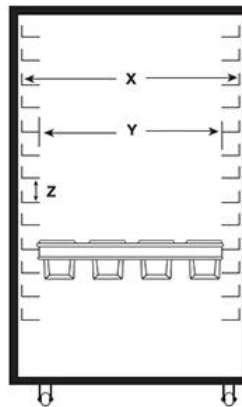


Dimensions of the mould:

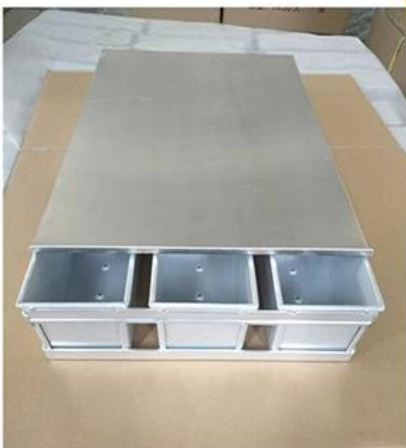
- A = length of the top (inside)
- B = width of the top (inside)
- C = length of the bottom (outside)
- D = width of the bottom (outside)
- H = height (inside)

Dimensions of the rack:

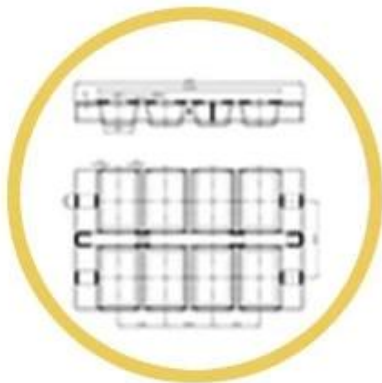
- X = width of the oven rack
- Y = free opening between the runners (shelves)
- Z = distance between the runners (shelves)



Cases of Custom Made Strap Loaf Pans



Procedures for custom made loaf baking pans



1. DRAWING



2. DESIGN



3. PRODUCT



6. SHIPPING



5. LOADING



4. PACKING



Custom Made Strap Loaf Pan Used with Bakery Trolley



Higit pang uri ng custom made bread loaf baking pan para sa iyong impormasyon
Narito ang ilang classic modelo ng isang tinapay bread baking pan mula sa Tsingbuy [personalized na bakeware factory](#).

Single Loaf Pan



natural surface



corrugated



full perforation



nonstick



corrugated



golden color



holes at bottom



full perforation



custom size



Mga factory na larawan mula sa Tsingbuy strap loaf pan producer





Bukod sa [China bread pan pakyawan](#), Nagbibigay din ang Tsingbuy Bakeware Manufactruer ng pasadyang disenyo at pakyawan ng iba pang komersyal na bakeware, tulad ng sheet pan, baguette pans, loaf pans, multi-dead na baking pans, bakery trolley, cake pans atbp.

