

190/210/250/300/385/450 1.0mm 12

190 / 210 / 250 / 300 / 385 / 450g

- 1. 1.0mm
 - 2.
 - 3.
 - 4.
 - 5.
 - 6.
 - 7. ODM & OEM
 - 8. 12
- 190/210/250/300/385/450g

Aluminum Non Stick Bread Loaf Pan







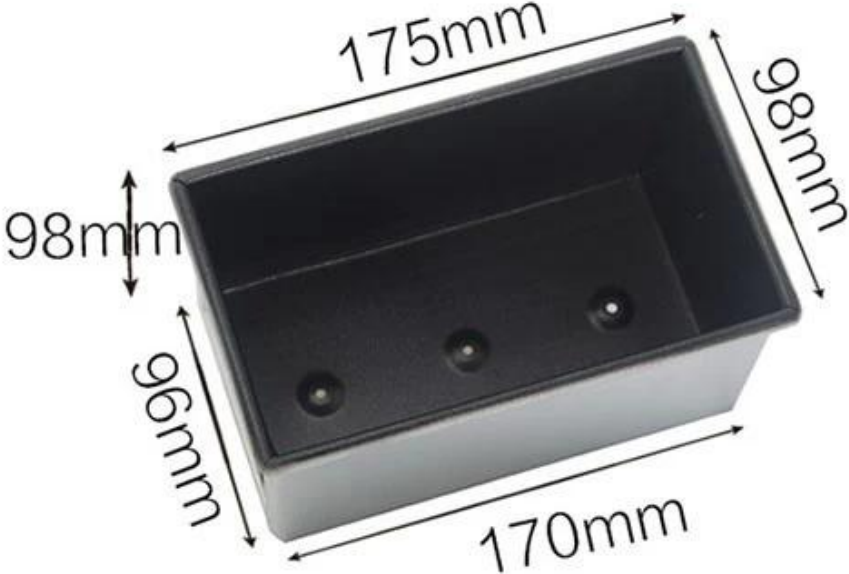
190g non stick loaf pan



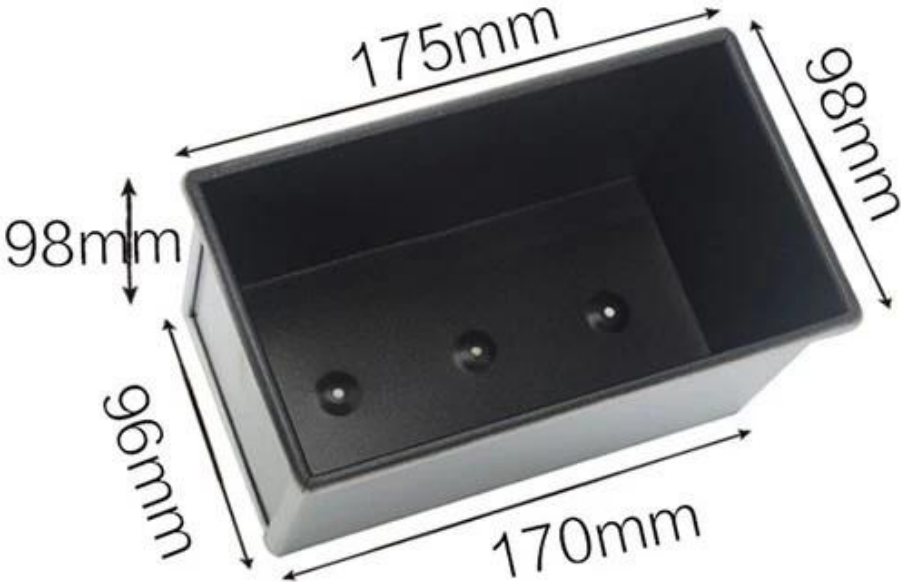
210g non stick loaf pan



250g non stick loaf pan



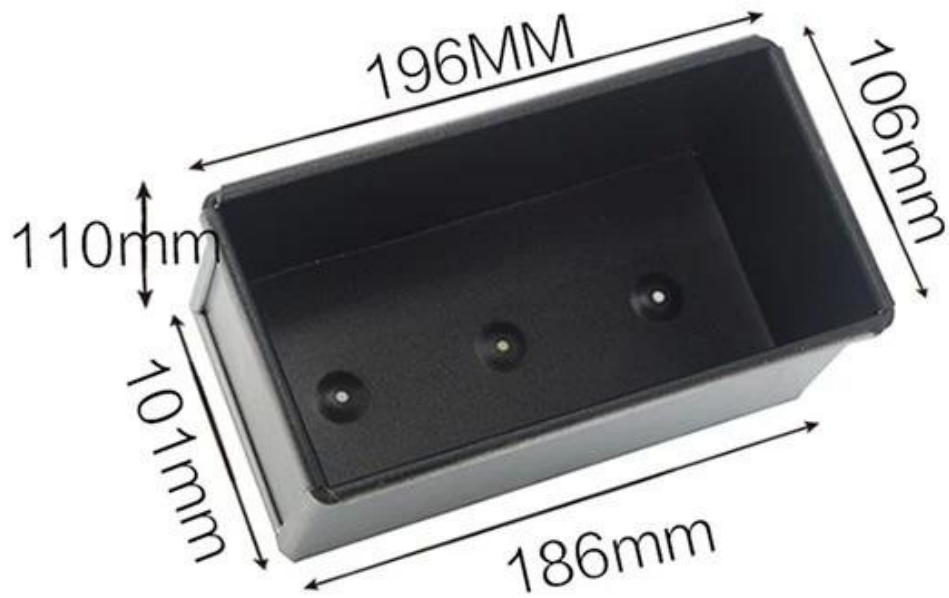
300g non stick loaf pan



385g non stick loaf pan



450g non stick loaf pan



Cover for 250g loaf pan



Cover for 300g loaf pan



Cover for 450g loaf pan



Teflon coating

Silicone coating



Material:

Aluminum alloy

Aluminized steel

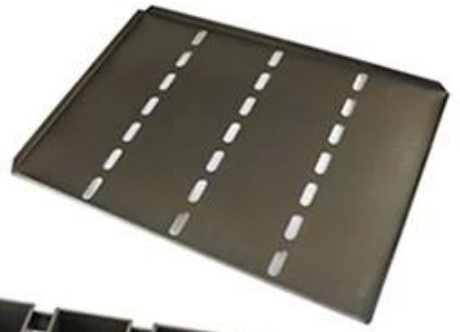


1

12

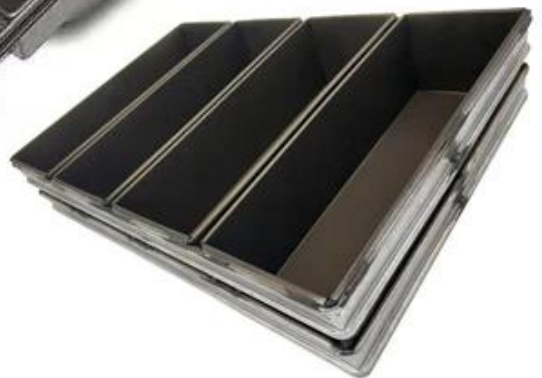
More Customized Strap Loaf Pans from Tsingbuy







Customized shape
Customized size
Rack matched





Loaf Pan

Tsingbuy Industry Limited

