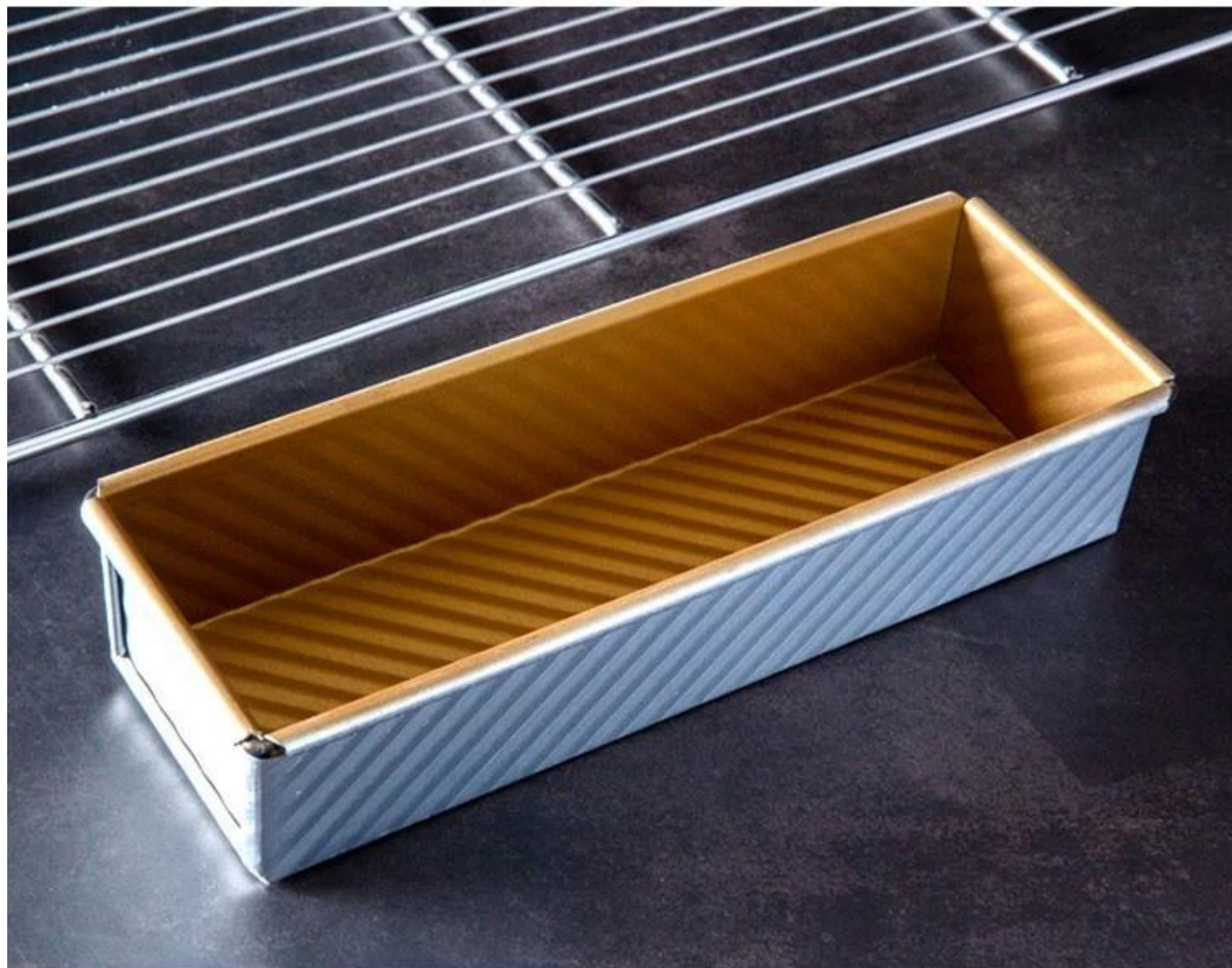


Aluminum / Alusteel Non Stick Bread Loaf Pan







Black PTFE Non Stick
Long Bread Loaf Pan
top 254x84x55mm
bottom 250x80mm



Aluminum alloy
Light in weight
Fast heat conductivity
Non stick coated
Easy to demould
Easy for cleanup







1. 選擇合適的烤盤

2. 預熱烤箱

3. 將麵團放入烤盤中，並均勻地塗抹油

4. 將烤盤放入預熱好的烤箱中

5. 烤製時間

6. 取出烤盤

7. 將烤好的麵包放在網架上晾乾

8. 完成

9. 享用美食

customized single loaf pan





Teflon coating



Silicone coating



Material:

Aluminum alloy

Aluminized steel

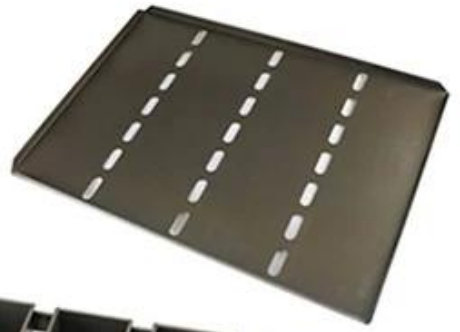


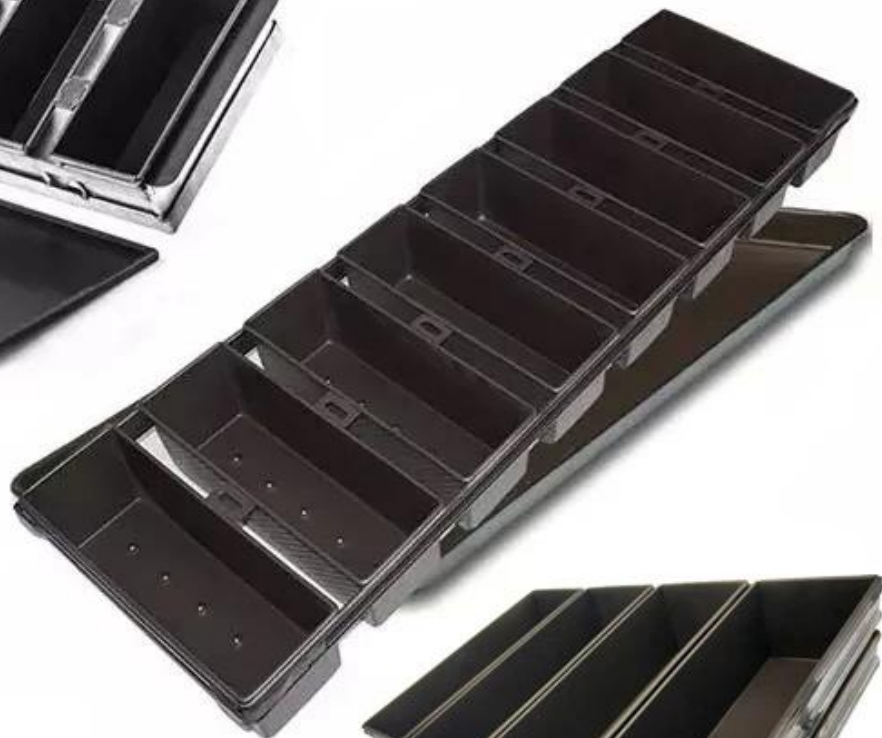
1

12

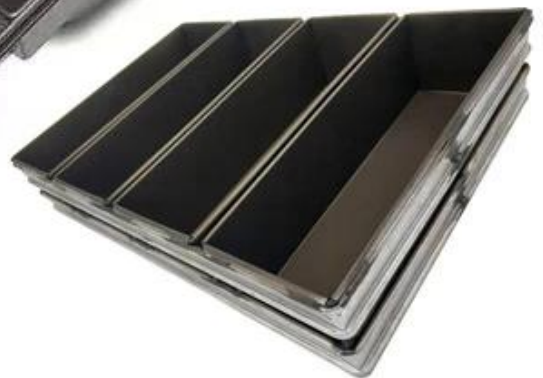
More Customized Strap Loaf Pans from Tsingbuy



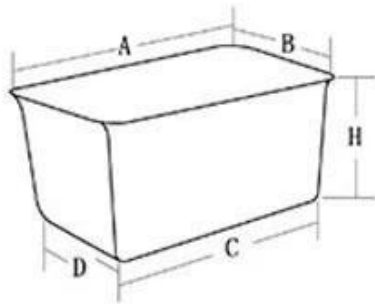




Customized shape
Customized size
Rack matched

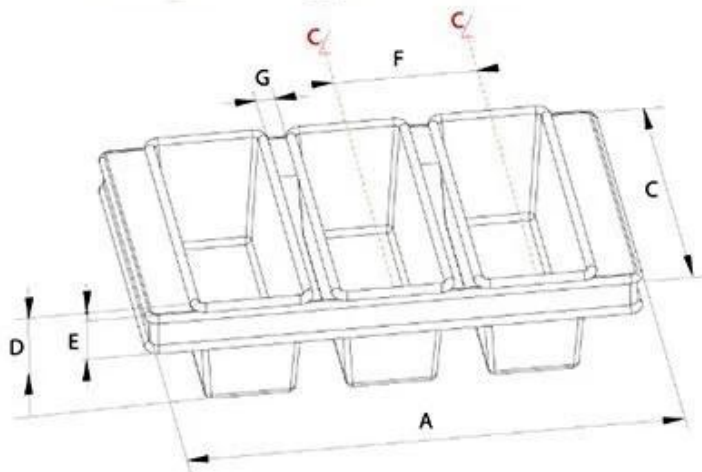


Customized Single Loaf Pan



- A. Top length of the item
- B. Top width of the item
- C. Bottom length of the item
- D. Bottom width of the item
- H. Height

Customized Strapped Loaf Pan Sets



- A. Overall Length
- C. Overall Width
- D. Depth
- E. Frame Height
- F. Center-to-center
- G. Pan Distance



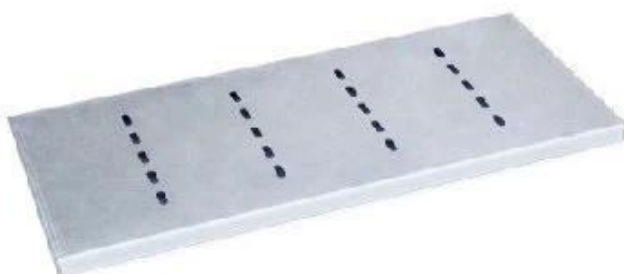
Flat handle



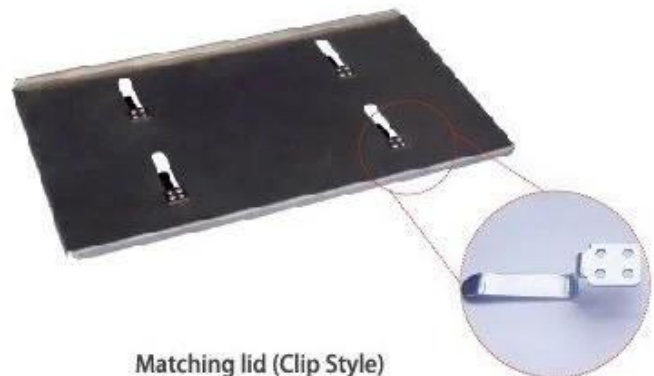
Frame handle



no handle



Matching lid (Drop Style)



Matching lid (Clip Style)

□□□□

Tsingbuy [www.tsingbuy.com](#) 專業生產鋁合金箱式麵包爐，歡迎各界人士垂詢。
ODM&OEM 服務，品質保證，交貨迅速。



Loaf Pan

Tsingbuy Industry Limited



