

125/250/450

Technical specifications and dimensions

- Dimensions: 125x250x450 mm
- Material: a
- Weight: e
- Capacity: q
- Color: [blue](#)

Additional technical details and notes



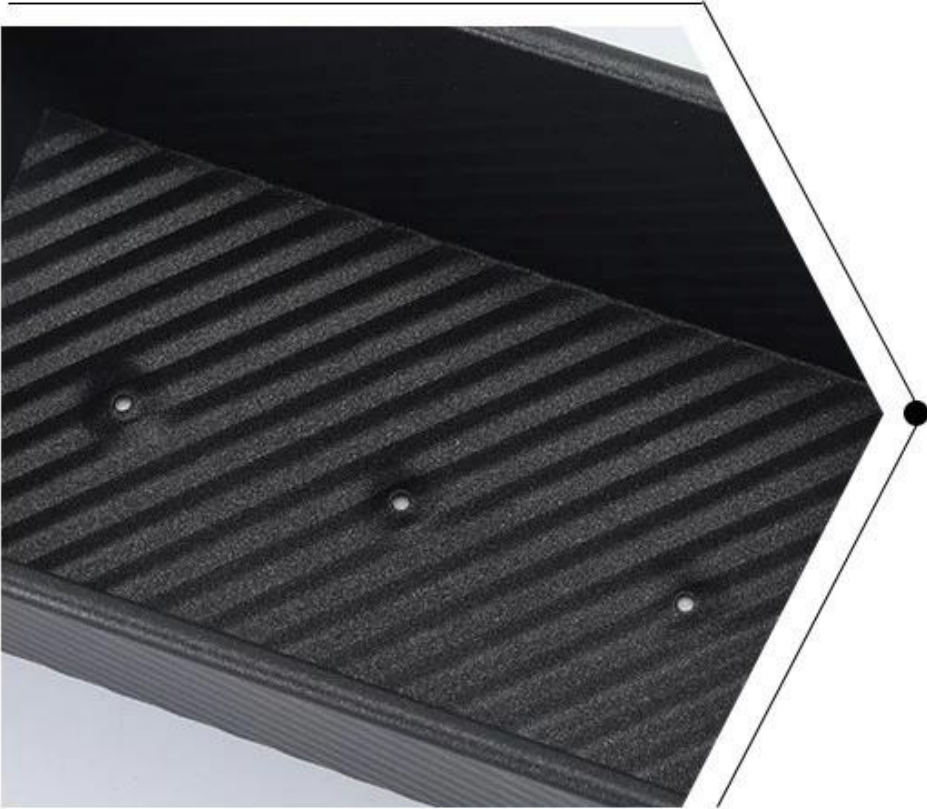












Product

One-piece BREAD LOAF PAN

Material

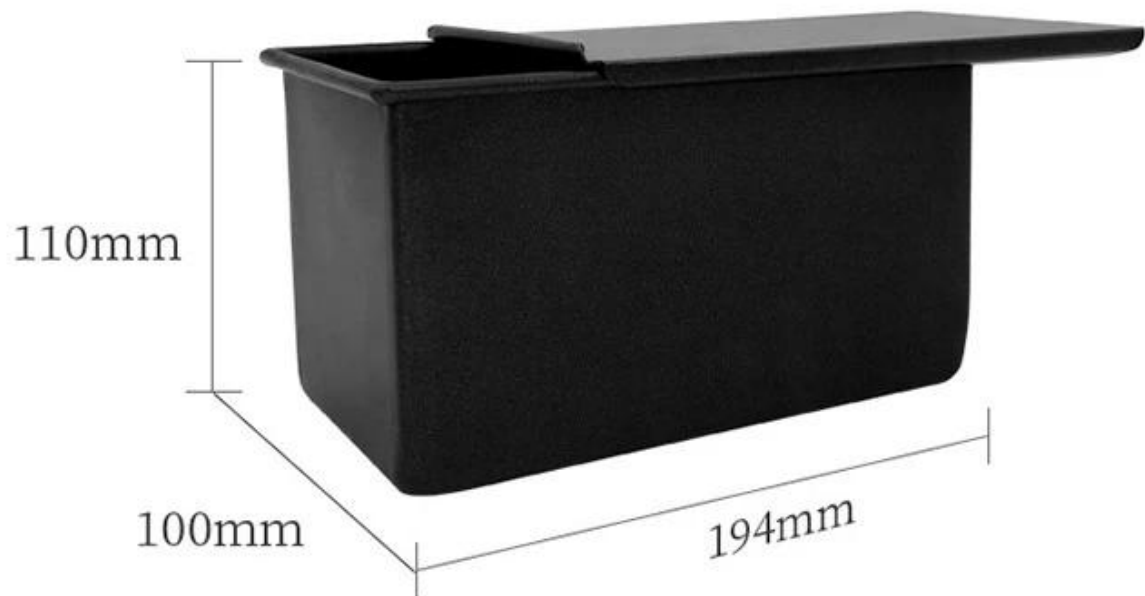
Aluminum

Net weight

309g or so

Temperature resistance

220°C







專業生產各類矽膠烘焙模具

歡迎各界人士垂詢 www.hkplastic.com Industry Limited

地址：廣東省東莞市石碣鎮石碣村

產品系列：250/450/500/750/900/1000/1200g 各類矽膠模具

材料：食品級PTFE 矽膠

ODM&OEM 服務

Single Loaf Pan



natural surface



corrugated



full perforation



nonstick



corrugated



golden color



holes at bottom



full perforation



custom size



Strap Loaf Pan

Available for food factory machinery lines



4/5 straps with lid

corrugated

7 long straps



with buckled lid

with handle

nonstick



5 straps

2 straps with lid

8 straps



strengthened lid

separated lids

24 toast boxes

本公司 承接 CNC 加工 1 至 5000 件 承接 OEM&ODM 承接 ISO9001 认证 LFGB 认证

Production Machines



Automatic cutting machine



Automatic punching machine



Punching machine



Bending machine



Sand blasting machine



Drying machine

Our Advantages



Professional machine



Standard production flow



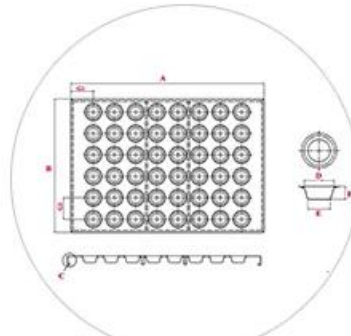
Experienced workers



Clean & tidy warehouse



Quick production fast dispatch



ODM & OEM service

