

Aluminized Steel Custom Nonstick Farmhouse Loaf Pan with Deep Drawn Round Corners

Main features of Aluminized Steel Custom Nonstick Farmhouse Loaf Pan

1. Made of high qualified aluminized steel material, 0.8/1.0mm thickness, good heat conductivity, food-safe and strong durability.
2. Folded construction with reinforced wire support in each pocket, stable and not warp being heated
3. Extra reinforced bar around all pockets provides superior strength and make the whole body more durable
4. The custom design in size makes them suitable for machinery food-production lines, available in oven configurations for greater efficiency.
5. Tsingbuy [farmhouse loaf pan manufacturer](#) has more than 12 years experience and ensures you high-qualified product with excellent performance.

Product images for Aluminized Steel Custom Nonstick Farmhouse Loaf Pan









More type of Aluminized Steel Custom Nonstick Farmhouse Loaf Pan

Here are some pictures of SINGLE loaf pans and STRAP loaf bread pans from Tsingbuy [nonstick loaf pan supplier](#).

Teflon coating

Silicone coating



Material:

Aluminum alloy

Aluminized steel

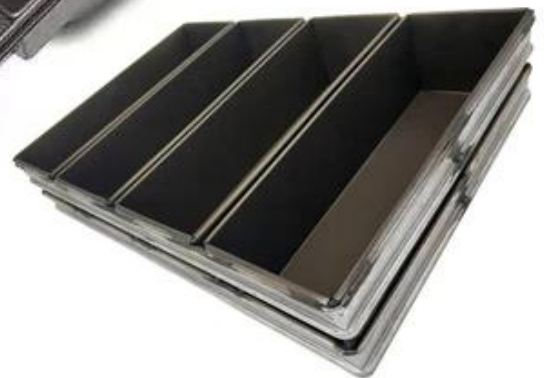


More Customized Strap Loaf Pans from Tsingbuy

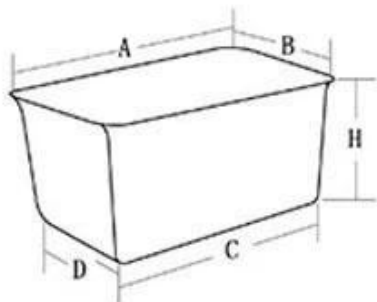




Customized shape
Customized size
Rack matched

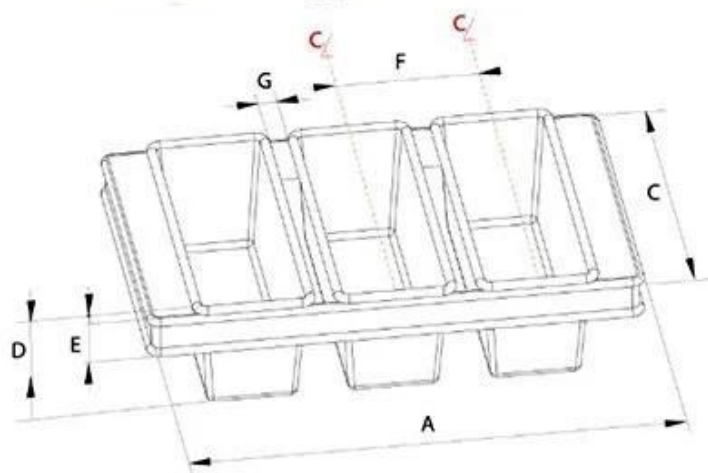


Customized Single Loaf Pan



- A.Top length of the item
- B.Top width of the item
- C.Bottom length of the item
- D.Bottom width of the item
- H.Height

Customized Strapped Loaf Pan Sets



- A.Overall Length
- C.Overall Width
- D.Depth
- E.Frame Height
- F.Center-to-center
- G.Pan Distance



Flat handle



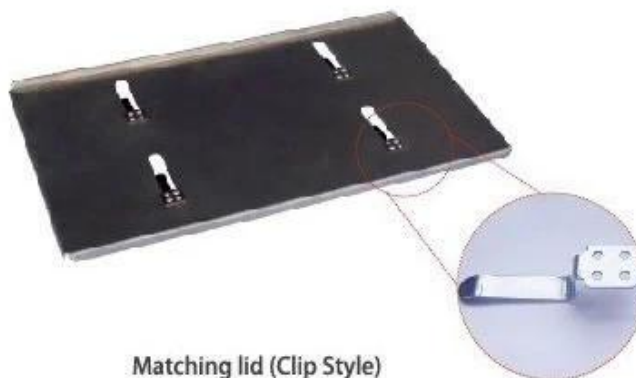
Frame handle



no handle



Matching lid (Drop Style)



Matching lid (Clip Style)

Factory pictures from strap loaf pan supplier



Loaf Pan

Tsingbuy Industry Limited



Contact us

<div><div></div><div><div>Zoe Lee</div><div>TSINGBUY INDUSTRY LIMITED FACTORY PLANET</div><div>OEM & ODM - Bakeware and Customization</div></div></div>		
<div></div> Tel	+86 186 1186 6087	+86 0755-85234769
<div></div> Email	marketing@tsingbuy.com	
<div></div> Skype	+86 186 1186 6087	
<div></div> Whatsapp	+86 186 1186 6087	
<div></div> Web	www.chinabakeware.com	
<div></div> ADD	2 Floor B1 Building, No 22 Dafu Industry park, Guanlan, Longhua District, Shenzhen, China 518110	