

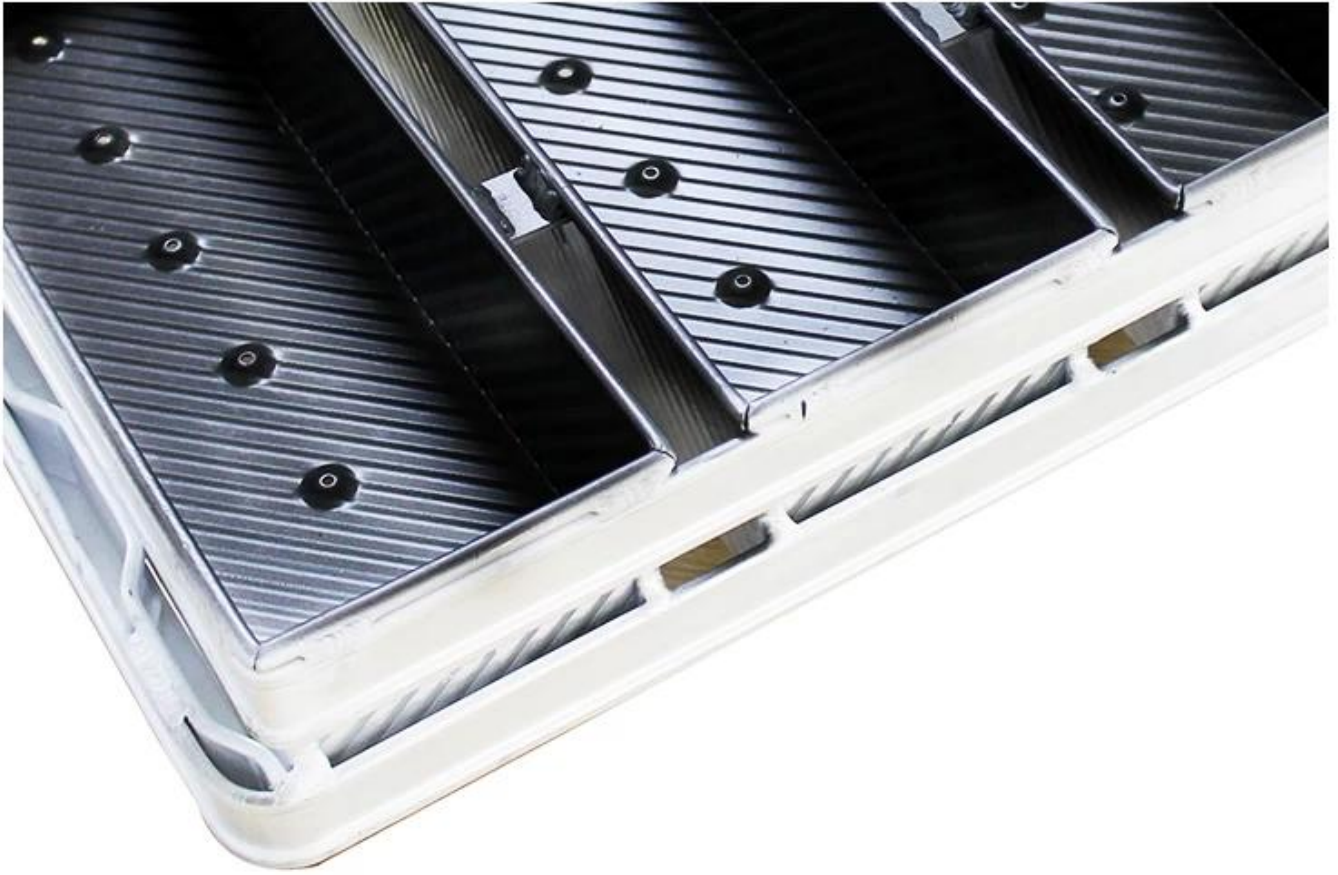
Corrugated Alusteel 5 Strap Loaf Pan

Main features of corrugated alusteel 5 strap loaf pan

- High strength alusteel material, durable and good heat conduction.
- Corrugated surface for better even heating during baking.
- Non-stick surface for easier mould release and cleanup.
- Skillful workmanship brings it out for smooth hand touch feeling and good appearance.
- Professional and experienced production engineers of the [loaf pan manufacturer](#) makes it with strong strength, excellent durability and long service life.

Product image of corrugated alusteel 5 strap loaf pan





More customized strap loaf pan made by Tsingbuy

Here are more types for your information from Tsingbuy [customized strap loaf pan supplier](#).

Material option: aluminum, alusteel, stainless steel

Perforation options: no perforation, bottom-perforated, all-perforated

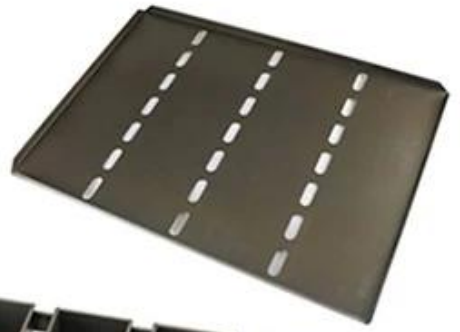
Surface options: smooth, corrugated, no-coating, teflon non-stick, silicone non-stick

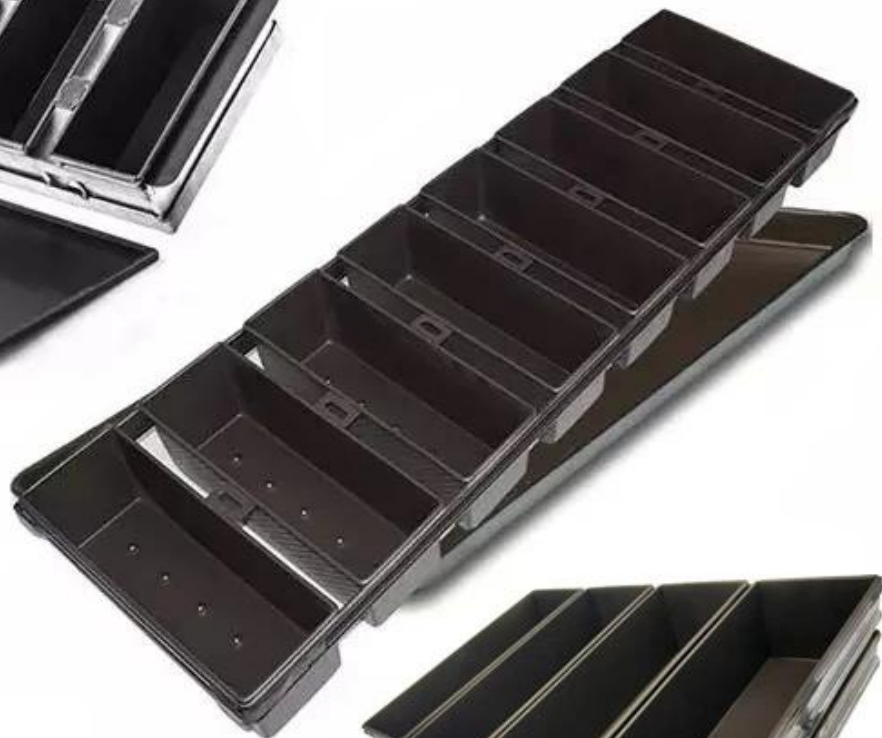
Size: any size

Lid: with lid or not as your requirement.

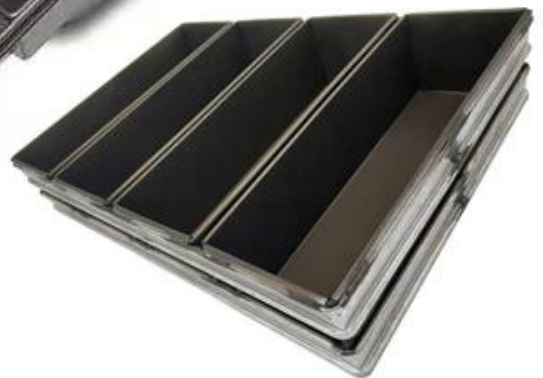
More Customized Strap Loaf Pans from Tsingbuy







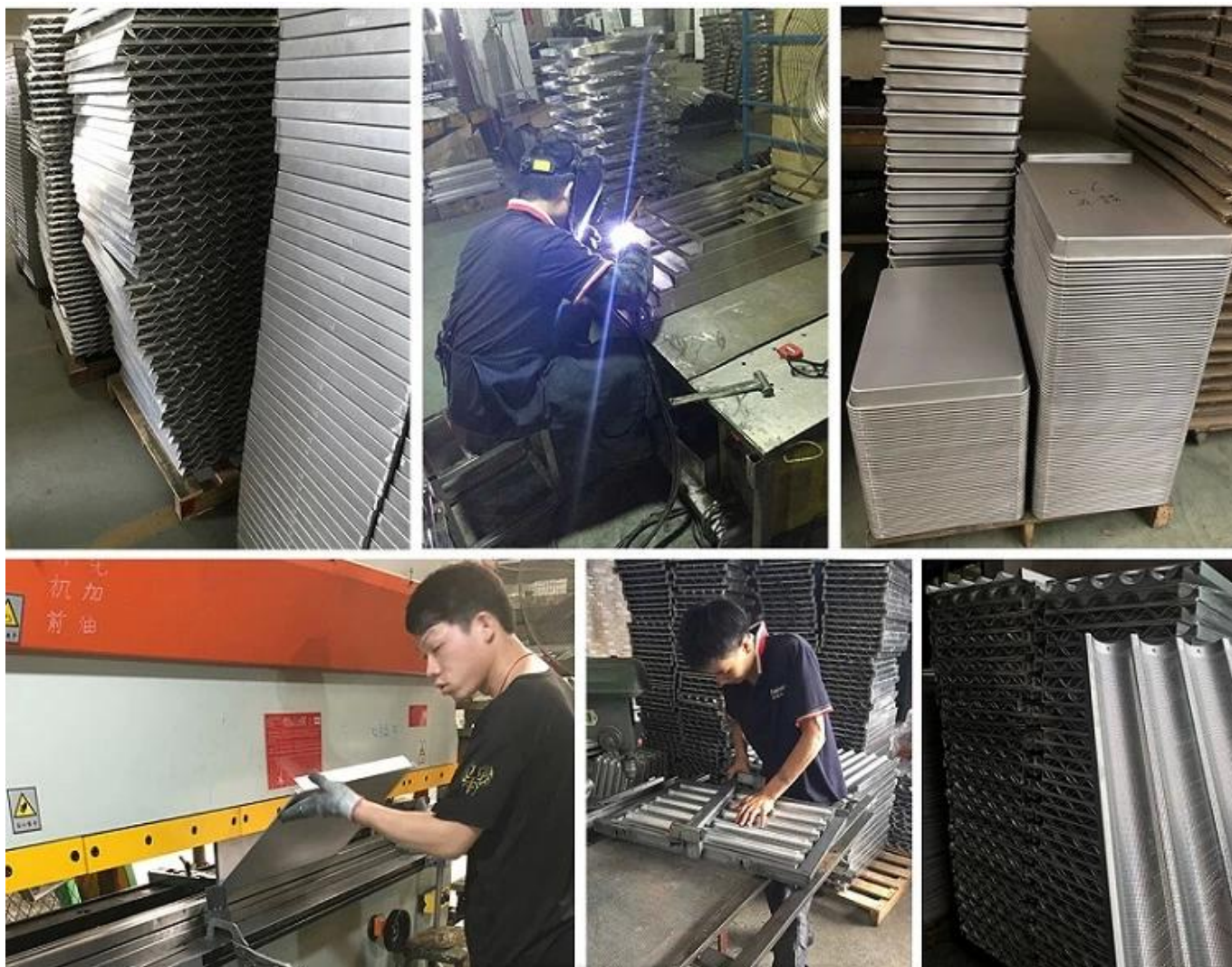
Customized shape
Customized size
Rack matched



Loaf pan factory pictures

Pictures of large quantity with [bread loaf pan wholesaler](#).





Contact us

 Zoe Lee		TSINGBUY INDUSTRY LIMITED FACTORY PLANET OEM & ODM - Bakeware and Customization	
 Tel	+86 186 1186 6087		+86 0755-85234769
 Email	marketing@tsingbuy.com		
 Skype	+86 186 1186 6087		
 Whatsapp	+86 186 1186 6087		
 Web	www.chinabakeware.com		
 ADD	2 Floor B1 Building, No 22 Dafu Industry park, Guanlan, Longhua District, Shenzhen, China 518110		