

Corrugated Alusteel 4 Strap Loaf Pan

Main features of corrugated alusteel 4 strap loaf pan

- High strength alusteel material, durable and good heat conduction.
- Corrugated surface for better even heating during baking.
- Non-stick surface for easier mould release and cleanup.
- Skillful workmanship brings it out for smooth hand touch feeling and good appearance.
- Professional and experienced production engineers of the [alusteel loaf pan manufacturer](#) makes it with strong strength, excellent durability and long service life.

Product image of corrugated alusteel 5 strap loaf pan





More patterns of customized strap loaf pan

Here are more types for your information from Tsingbuy [bread loaf pan manufacturer](#).

Material option: aluminum, alusteel, stainless steel

Perforation options: no perforation, bottom-perforated, all-perforated

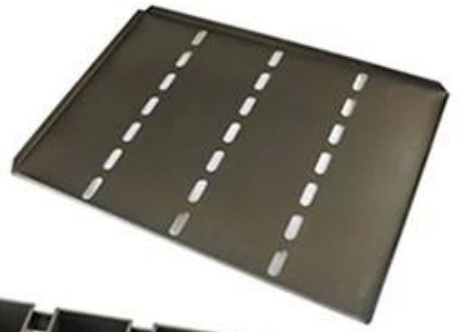
Surface options: smooth, corrugated, no-coating, teflon non-stick, silicone non-stick

Size: any size

Lid: with lid or not as your requirement.

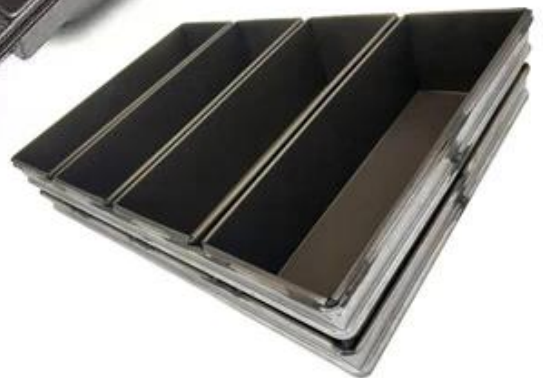
More Customized Strap Loaf Pans from Tsingbuy







Customized shape
Customized size
Rack matched



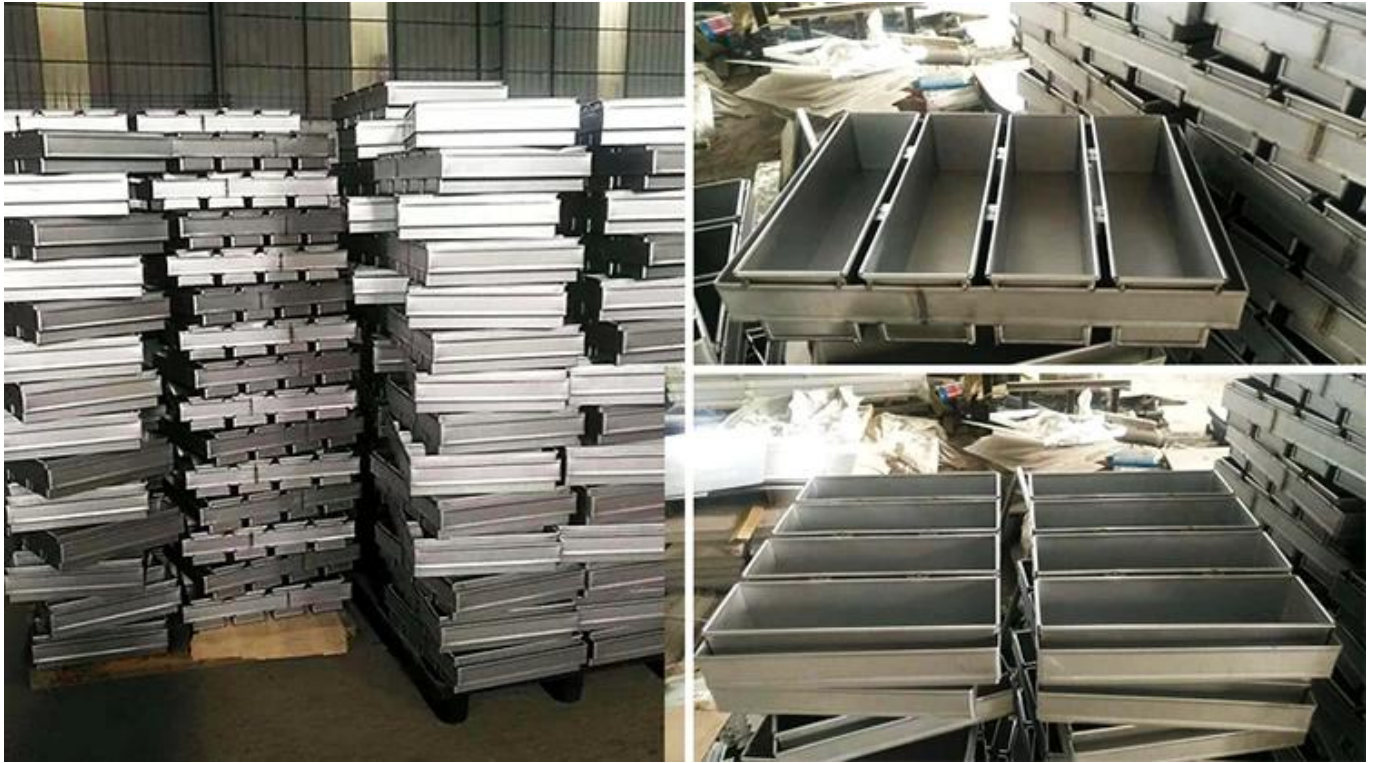
Loaf pan factory pictures



Loaf Pan

Tsingbuy Industry Limited





Contact us

To learn more about Tsingbuy [customized strap loaf pan supplier](#), pls feel free to contact us.

 Zoe Lee		TSINGBUY INDUSTRY LIMITED FACTORY PLANET OEM & ODM - Bakeware and Customization	
Tel	+86 186 1186 6087	+86 0755-85234769	
Email	marketing@tsingbuy.com		
Skype	+86 186 1186 6087		
Whatsapp	+86 186 1186 6087		
Web	www.chinabakeware.com		
ADD	2 Floor B1 Building, No 22 Dafu Industry park, Guanlan, Longhua District, Shenzhen, China 518110		