

# Alusteel Non-stick Toast Bread Pan

## **Main features of teflon coated non-stick aluminized steel toast bread pan**

1. made of 1.0mm thick heavy gauge aluminized steel, commercial grade and durable for long service life. Aluminium material is also optional.
2. Food-safe and smooth, non-stick surface allows for quick release of baked-breads. Easy for fast cleanup.
3. Wire in rim design makes it more durable and not easy to deformation for long service life.
4. Multiple function for making sandwiches, toast, traditional loaf breads etc.
5. Custom size as your requirements is welcomed in Tsingbuy [non-stick toast bread pan supplier](#).
6. Tsingbuy is a professional supplier which has proudly manufactured high quality baking trays, pullman loaf tins and provided custom bakeware for international market for over 12 years.

## **Product images of teflon coated non-stick aluminized steel toast bread pan**







## **More types of toast bread pans from Tsingbuy**

Here are more types for your information from Tsingbuy [aluminized steel loaf pan manufacturer](#).

Material optional: aluminum, aluminized steel, stainless steel

Perforation options: no perforation, bottom-perforated, all-perforated

Using scene: single loaf pan, strap loaf pan

Surface options: smooth, corrugated, no-coating, teflon non-stick, silicone non-stick

Size: any size

Lid: with lid or not as your requirement.

Custom manufacturing of strap loaf pan is one of our biggest strength, welcome for more info.

# customized single loaf pan



Teflon coating

Silicone coating



Material:

Aluminum alloy

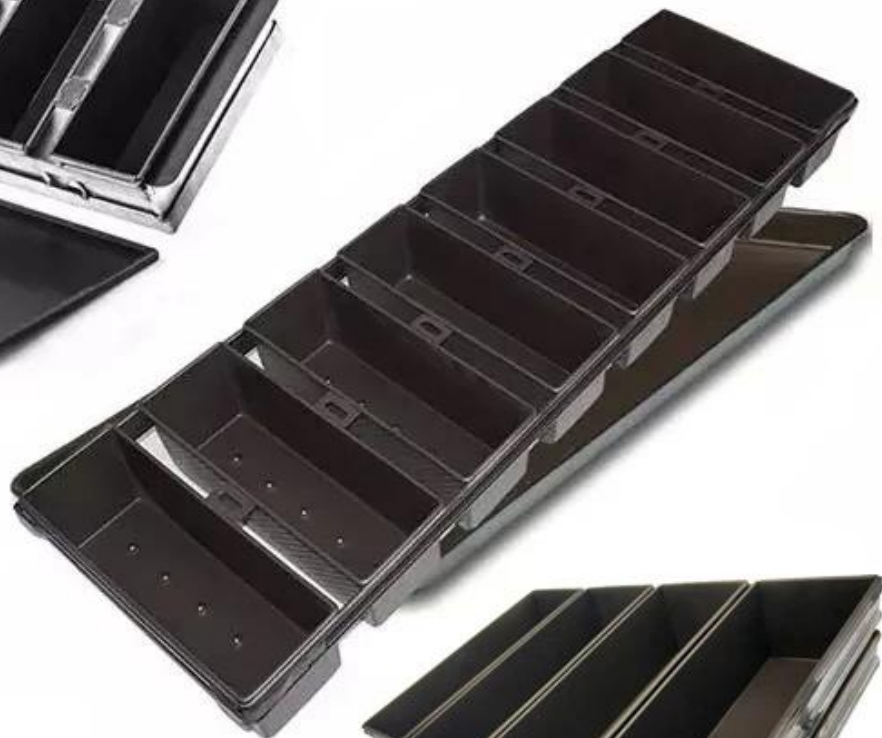
Aluminized steel



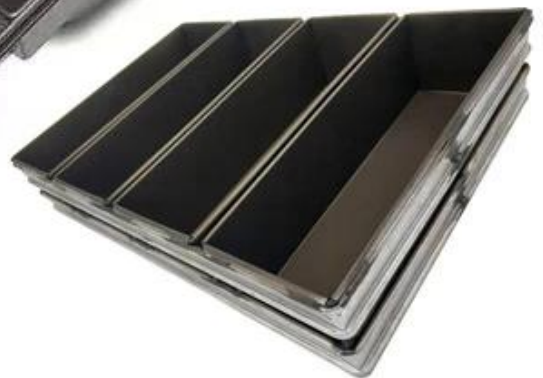
## More Customized Strap Loaf Pans from Tsingbuy



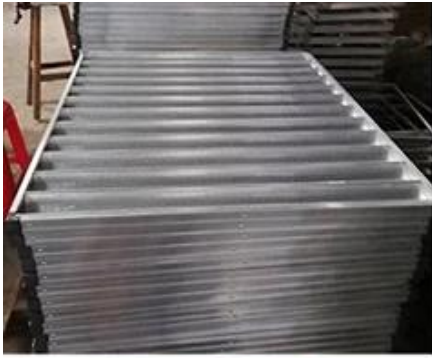




Customized shape  
Customized size  
Rack matched



## Factory pictures









**Contact us**



Zoe Lee

TSINGBUY INDUSTRY LIMITED FACTORY PLANET  
OEM & ODM - Bakeware and Customization



Tel

+86 186 1186 6087

+86 0755-85234769



Email

marketing@tsingbuy.com



Skype

+86 186 1186 6087



Whatsapp

+86 186 1186 6087



Web

www.chinabakeware.com



ADD

2 Floor B1 Building, No 22 Dafu Industry  
park, Guanlan, Longhua District, Shenzhen, China 518110