

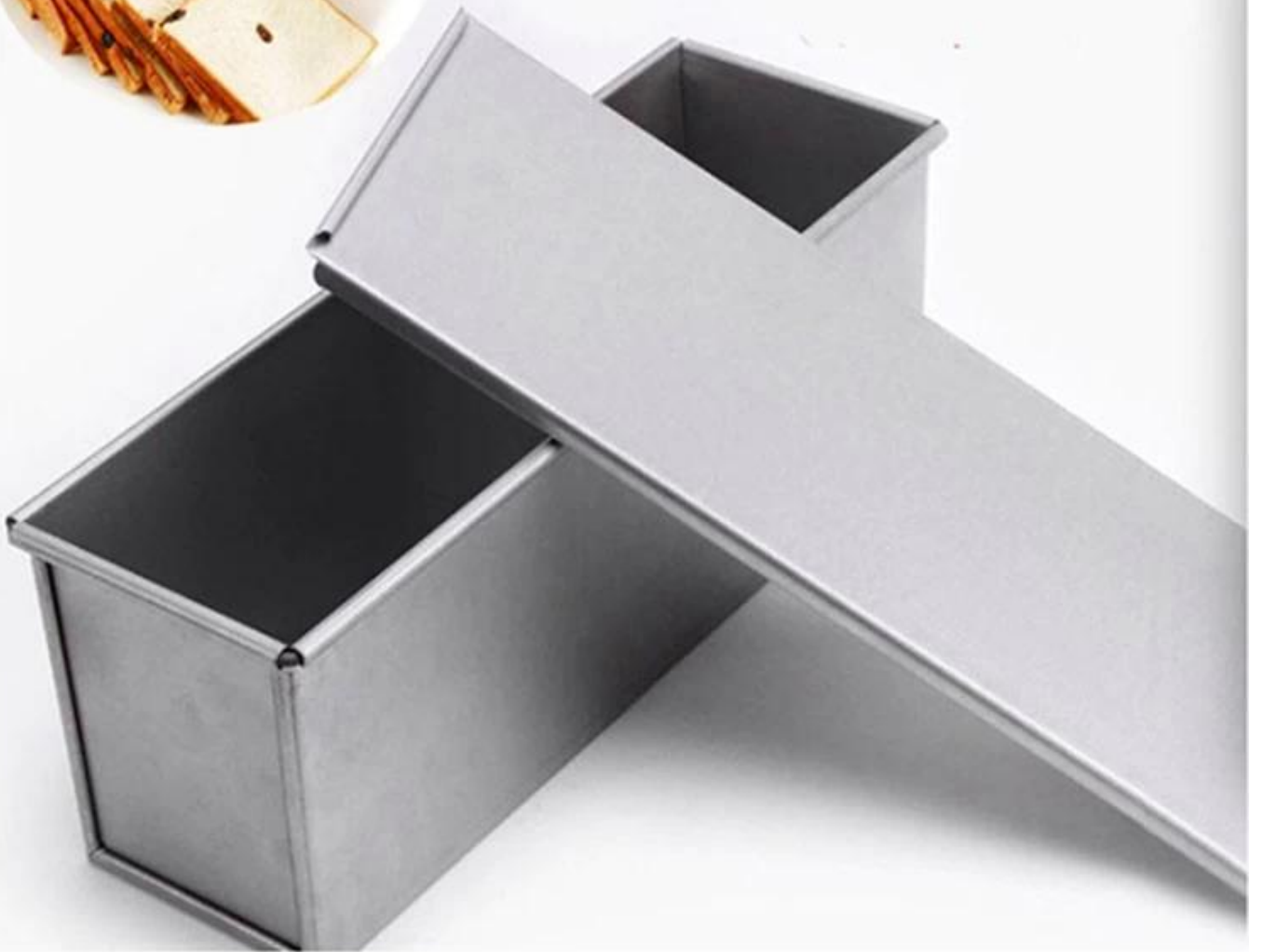
Wholesale 450/600/750/900/1000/1200g Corrugated Aluminum Pullman Loaf Pan Toast Bread Baking Tins with Lid

Main features of corrugated aluminum pullman loaf pan bread tin with lid

1. Safe and Health : food-grade PTFE non stick coating and Silicone non stick coating are optional. No harmful substance release in high temperature baking.
2. Commercial Grade : adopts thickened 1.0mm aluminium alloy material to accelerate even heat. Strengthened folded edge for convenient use and avoid warping. Ensure longer service life
3. Easy to Use : excellent non-stick features can be achieved with less natural baking oil, less baking time and low energy consumption. Easier to release loaf bread and clean up.
4. Multiple Applications : baking at home kitchen, quickly make high quality family dishes, afternoon tea, banquet desserts and other delicacies. Easy to deal with daily baking, family dinner, friends gathering, festival celebrations, etc. The bread pan can also be used for commercial use in bakery, restaurant, hotel, supermarket etc.
5. Low Price : Tsingbuy bakeware manufacturer provides wholesale of this loaf bread baking pan with lid at low price. Custom design and manufacturing is also available in Tsingbuy [bread & loaf pans factory](#).

Product images of corrugated aluminum pullman loaf pan bread tin with lid

Nonstick Aluminum
Pullman Loaf Pan



Black Nonstick Loaf Pan with Smooth Surface



Product Specifications



weight	Length	width	height	function
450g	21.0cm	12.0cm	11.0cm	bakery
600g	32.0cm	10.5cm	10.8cm	bakery
750g	33.0cm	11.2cm	11.6cm	bakery
900g	34.0cm	11.8cm	12.0cm	bakery
1000g	34.0cm	13.5cm	12.0cm	bakery
1200g	38.0cm	13.3cm	12.5cm	bakery



High Quality

Aluminum Alloy

Food Grade

Nonstick Coating

Exquisite Workmanship



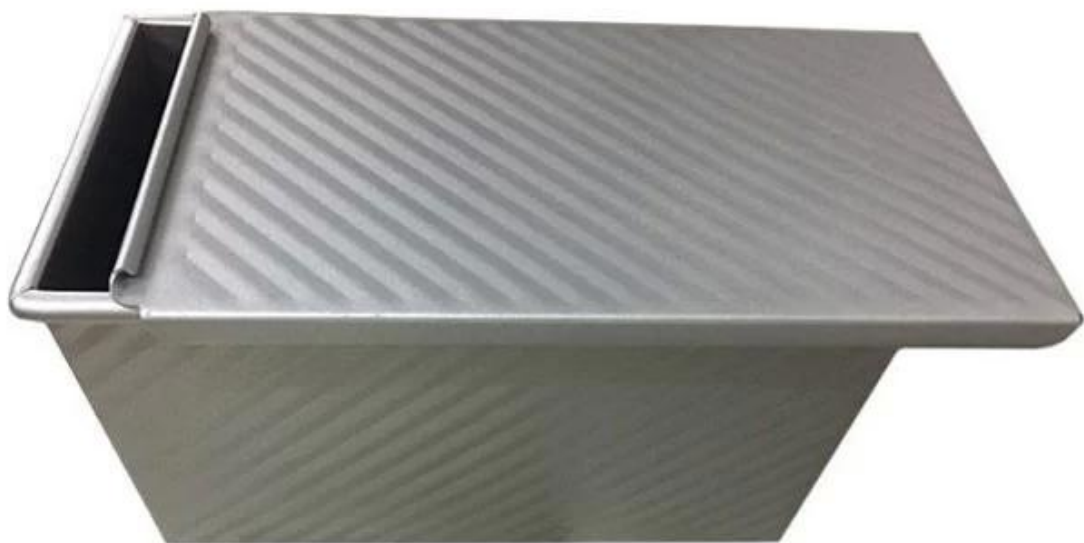
rolled edge
design

Holes for aire flow









More types of bread & loaf pans for your information

Here are more designs for bread loaf pans.

Our Pullman loaf pans is designed with simple style, beautiful and practical with fast heat conduction, even heating, not easy to appear partial scorch.

Material optional: aluminum, aluminized steel, stainless steel

Perforation options: no perforation, bottom-perforated, all-perforated

Using scene: single loaf pan, strap loaf pan

Surface options: smooth, corrugated, no-coating, Teflon non-stick, silicone non-stick

Size: any size

Lid: with lid or not as your requirement.

customized single loaf pan





Material:

Aluminum alloy

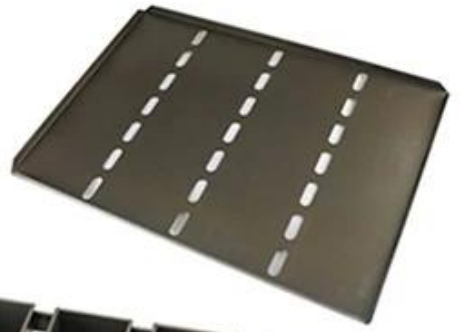
Aluminized steel

Besides [wholesale pullman loaf pan with lid](#), ODM&OEM service of sheet pan, baguette pan, multi-mould cupcake pan, strap loaf pan is also one of our biggest strength, welcome for more info.

We have engaged in bakeware manufacturing for over 12 years and has been supplying thousands of bakeware for international customers. Using our baking pan, you can easily make all kinds of delicious food, Chiffon cakes, mousse cake, Pound cake, cheese cake, etc

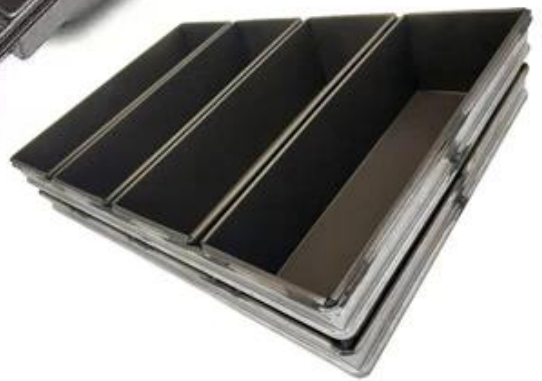
More Customized Strap Loaf Pans from Tsingbuy



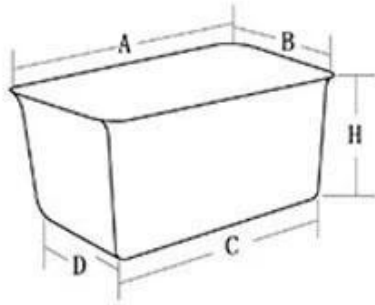




Customized shape
Customized size
Rack matched

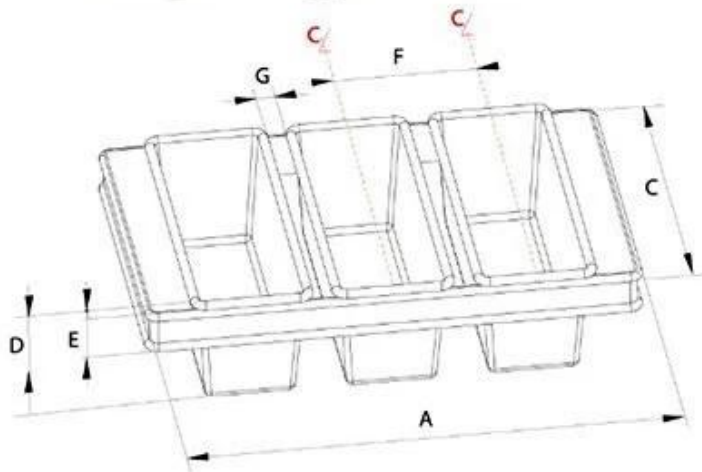


Customized Single Loaf Pan



- A. Top length of the item
- B. Top width of the item
- C. Bottom length of the item
- D. Bottom width of the item
- H. Height

Customized Strapped Loaf Pan Sets



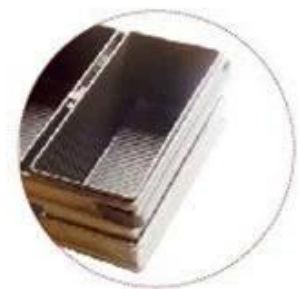
- A. Overall Length
- C. Overall Width
- D. Depth
- E. Frame Height
- F. Center-to-center
- G. Pan Distance



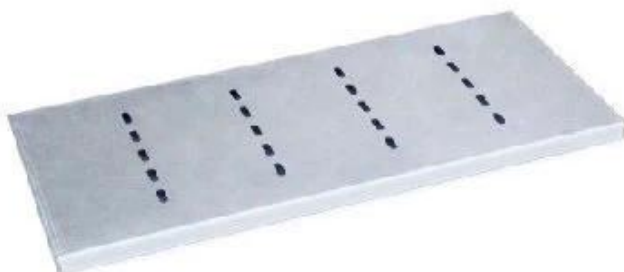
Flat handle



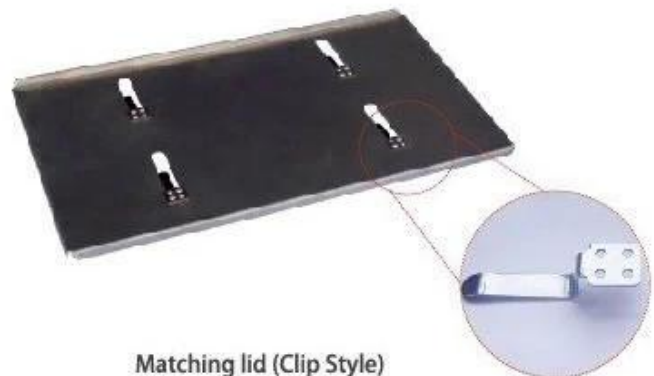
Frame handle



no handle



Matching lid (Drop Style)



Matching lid (Clip Style)

Factory pictures

Tsingbuy [bread tin supplier](#) also produces sheet pan, loaf pan, baguette pan, cupcake baking pan, cake pan etc for bakeries, food factories, restaurants for commercial use. ODM&OEM service is our greatest strength. Welcome to contact us if you are looking for commercial baking pans.



Loaf Pan

Tsingbuy Industry Limited



