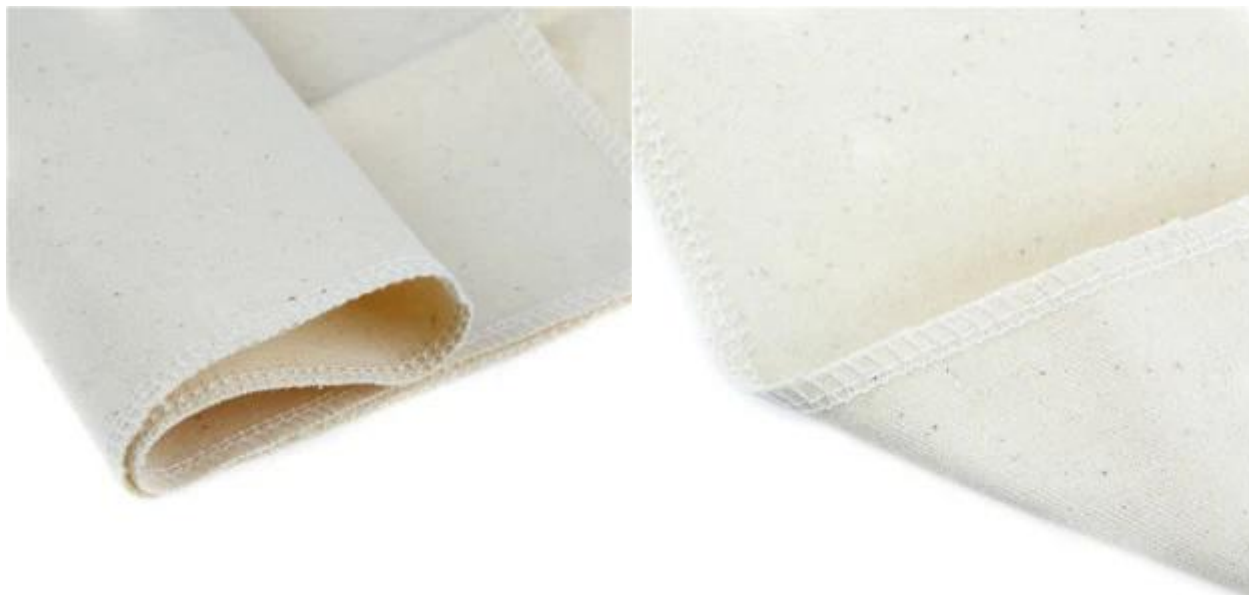


Caractéristiques:

1. Saupoudrer de farine blanche et de farine de riz pour empêcher la pâte de coller.
2. Fabriqué en toile de coton naturelle.
3. Non traité & non blanchi.
4. Nous pouvons personnaliser n'importe quelle taille pour vous.
5. Couture finie sur les quatre bords pour éviter l'effilochage

Produits Photos :





Natural Color, Adoptive Edible Cottonseeds

The couche is made with picked fresh cotton. The mixed color of the fabric is black cotton cottonseeds which are edible and can come off automatically after washing, so the couche looks more pure gradually.

Non-Sticky & Non-Loss

The couche is non-sticky and can achieve the non-sticky effect with just a small amount of flour. When the bread dough is fermented, it can prevent the loss of water and avoid the surface become dry.





Cotton canvas bread couche
Any size is available





Sur nous



Love you, Tsingbuy!



We are a family!

Our Core Value: Customers' Success

+Team+ Responsibility + Hardworking




Contactez nous

Contact Person: Season Chou

 **Email: sales1@tsingbuy.com**

 **Skype: [tsingbuysales1](https://www.skype.com/people/tsingbuysales1)**

 **Whatsapp: [+08613316407273](https://wa.me/08613316407273)**

Produits connexes

