

Aluminum Mini Loaf Pan with Lid



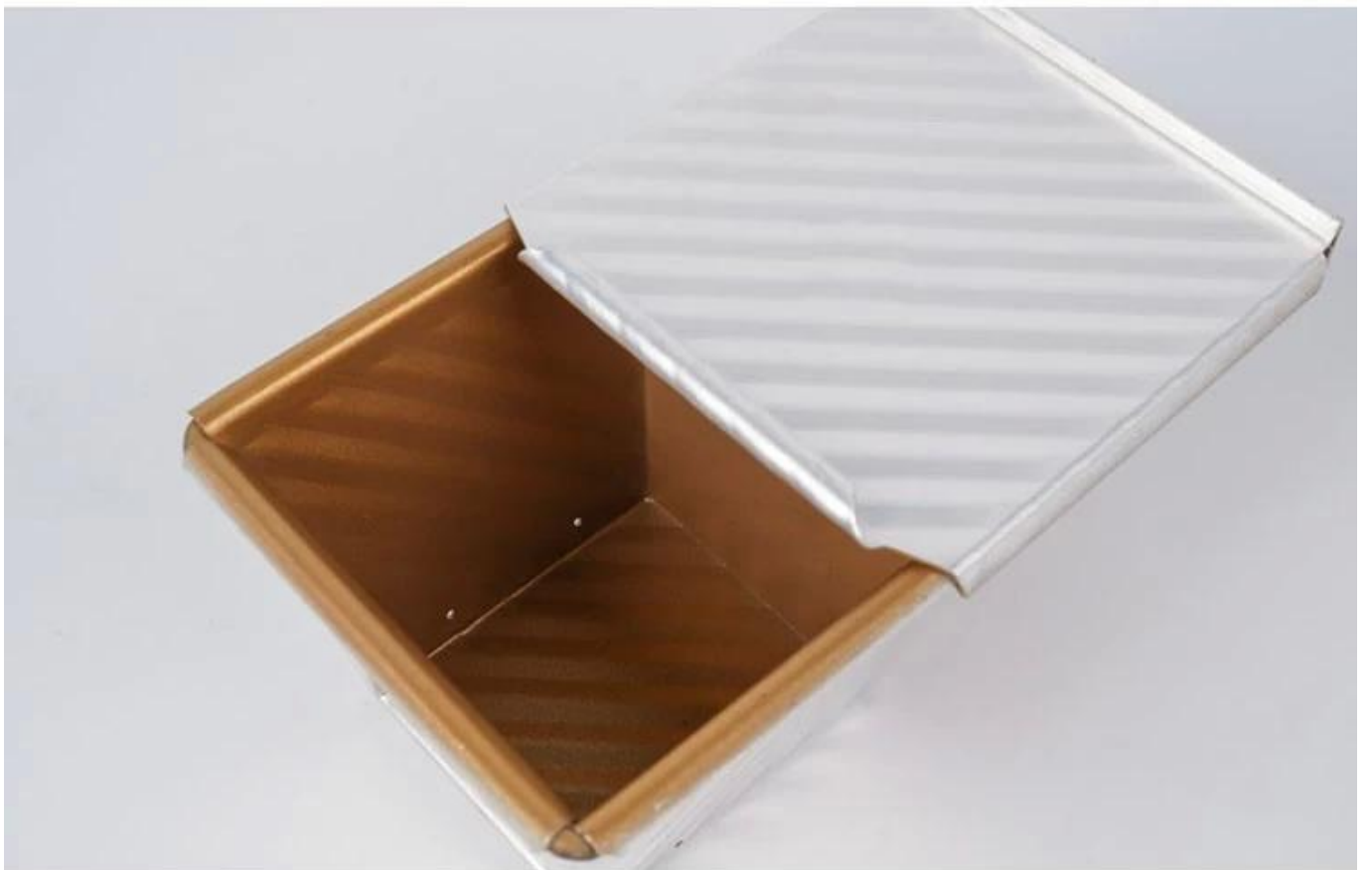


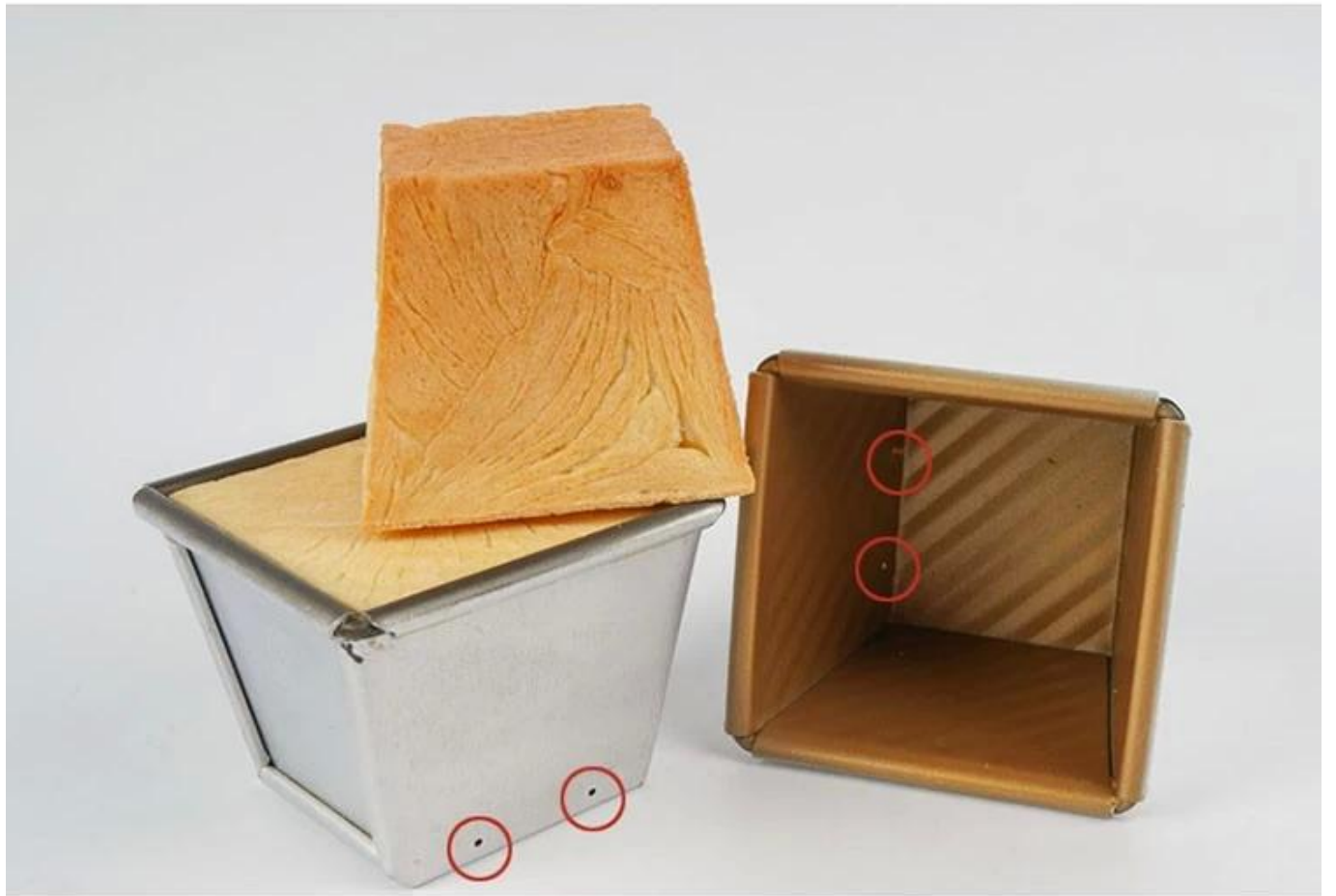
1.0mm aluminum
top 85x85x73mm
bottom 58x58mm

0.7/0.8mm alusteel
top 140x140x120mm
bottom 75x75mm



Gold color non stick
1.0mm aluminum
top 85x85x73mm
bottom 58x58mm







customized single loaf pan





Teflon coating



Silicone coating



Material:

Aluminum alloy

Aluminized steel

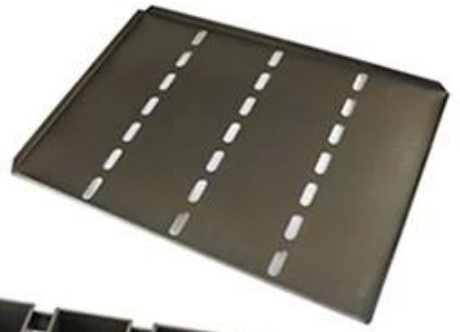


Aluminum alloy trays are made from aluminum alloy, which is a mixture of aluminum and other metals. They are known for their strength and durability. The trays are available in various sizes and finishes, including brushed aluminum and anodized aluminum. The trays are suitable for use in a variety of applications, including food processing, pharmaceuticals, and electronics.

Aluminized steel trays are made from steel that has been coated with a thin layer of aluminum. This coating provides the trays with excellent corrosion resistance and makes them suitable for use in a variety of applications, including food processing, pharmaceuticals, and electronics. The trays are available in various sizes and finishes, including brushed steel and aluminized steel. The trays are known for their strength and durability.

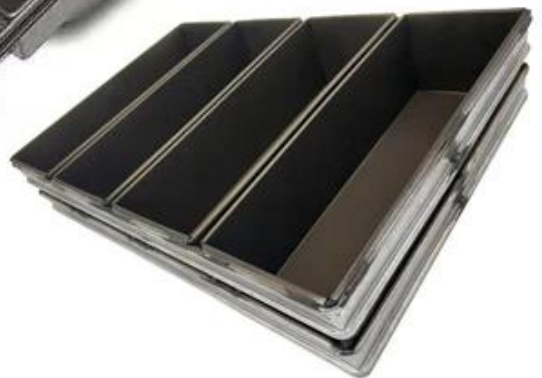
More Customized Strap Loaf Pans from Tsingbuy



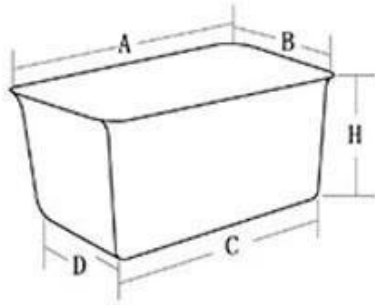




Customized shape
Customized size
Rack matched

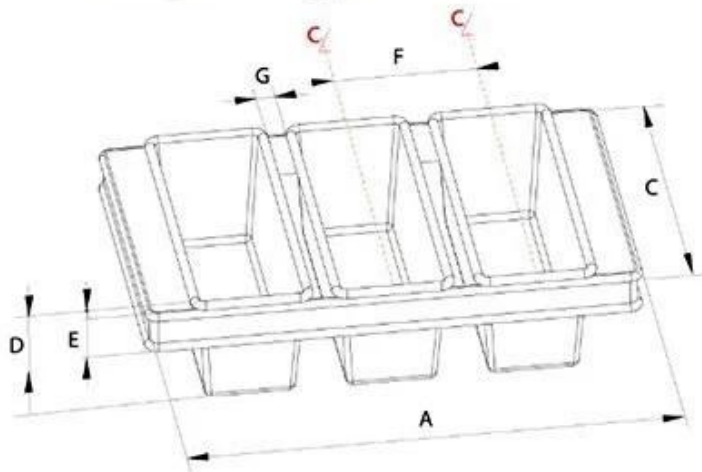


Customized Single Loaf Pan



- A. Top length of the item
- B. Top width of the item
- C. Bottom length of the item
- D. Bottom width of the item
- H. Height

Customized Strapped Loaf Pan Sets



- A. Overall Length
- C. Overall Width
- D. Depth
- E. Frame Height
- F. Center-to-center
- G. Pan Distance



Flat handle



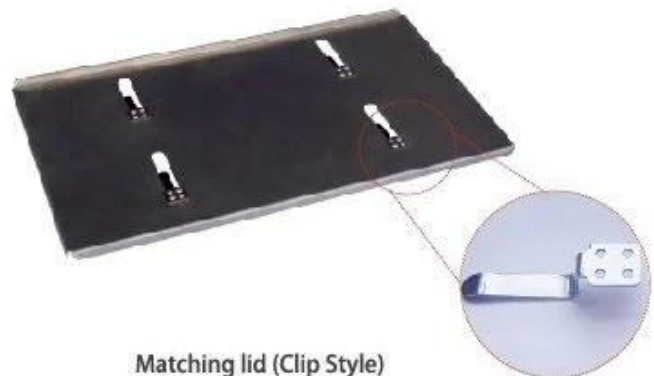
Frame handle



no handle



Matching lid (Drop Style)



Matching lid (Clip Style)

