





LOAF PAN SERIES

Non-stick loaf Pan, Pullman Loaf Pan, Perforated Loaf Pan, Anodized Loaf pan, Straped Loaf Pan and ect.

LOAF PAN

Loaf Pan

- Features: 1. Lightweight and durable, easy to clean, sturdy, environmentally friendly and energy-saving.
 2. Made of # 5052 aluminum alloy, which belongs to aviation aluminum and has a hardness three times higher than ordinary aluminum alloy!
 3. Can be customized according to your needs!

Corrugated Loaf Pan, Aluminium, Anodized

Model		Up Inside	Bottom Inside	Height	Thickness
TSTP01	250g	164X94mm	158X87mm	77mm	1.0mm
TSTP02	300g	175X100mm	173X98mm	100mm	1.0mm
TSTP03	385g	217X94mm	211X88mm	77mm	1.0mm
TSTP04	450g	197X106mm	186X101mm	110mm	1.0mm
TSTP05	600g	309X91mm	300X84mm	107mm	1.0mm
TSTP06	750g	316X100mm	305X93mm	116mm	1.0mm
TSTP07	900g	327X106mm	316X100mm	122mm	1.0mm
TSTP08	1000g	327X121mm	312X119mm	120mm	1.0mm
TSTP09	1200g	370X120mm	361X116mm	125mm	1.0mm
TSTP10	1500g	450X123mm	447X120mm	130mm	1.0mm



Loaf Pan, Aluminium, Anodized

Model		Up Inside	Bottom Inside	Height	Thickness
TSTP11	250g	164X94mm	158X87mm	77mm	1.0mm
TSTP12	300g	175X100mm	173X98mm	100mm	1.0mm
TSTP13	385g	217X94mm	211X88mm	77mm	1.0mm
TSTP14	450g	197X106mm	186X101mm	110mm	1.0mm
TSTP15	600g	309X91mm	300X84mm	107mm	1.0mm
TSTP16	750g	316X100mm	305X93mm	116mm	1.0mm
TSTP17	900g	327X106mm	316X100mm	122mm	1.0mm
TSTP18	1000g	327X121mm	312X119mm	120mm	1.0mm
TSTP19	1200g	370X120mm	361X116mm	125mm	1.0mm
TSTP20	1500g	450X123mm	447X120mm	130mm	1.0mm



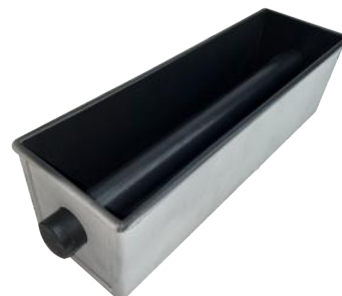
One-piece Molded 450g Loaf Pan
Alusteel, Non-stick

Model	Size	Thickness
TSTP21	197X106X110mm	0.7 mm



Heart Shaped Loaf Pan
Alusteel Double-sided Non-stick

Model	Size	Thickness
TSTP22	370X122X92mm	0.7 mm



Hollow Toast Box
Aluminium, Non-stick

Model	Size	Thickness
TSTP23	350X100X100mm	1.0 mm

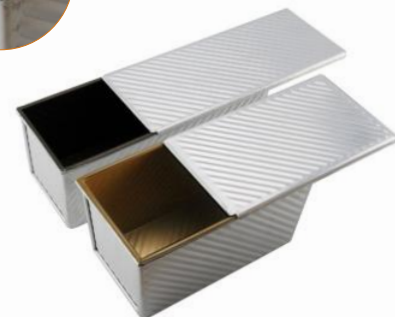
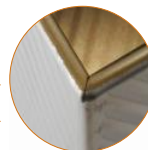
Low-sugar Loaf Pan, Aluminium, Double-sided Non-stick

Model		Up Inside	Bottom Inside	Height	Thickness
TSTP24	450g	197X106 mm	186X101 mm	110 mm	1.0 mm
TSTP25	600g	309X91 mm	300X84 mm	107 mm	1.0 mm
TSTP26	750g	316X100 mm	305X93 mm	116 mm	1.0 mm
TSTP27	900g	327X106 mm	316X100 mm	122 mm	1.0 mm
TSTP28	1000g	327X121 mm	312X119 mm	120 mm	1.0 mm
TSTP29	1200g	370X120 mm	361X116 mm	125 mm	1.0 mm
TSTP30	1500g	450X123 mm	447X120 mm	130 mm	1.0 mm
TSTP31	Cube	100X100 mm	98X98 mm	100 mm	1.0 mm



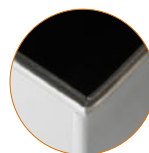
Corrugated Loaf Pan, Aluminium, Non-stick

Model		Up Inside	Bottom Inside	Height	Thickness
TSTP32	250g	164X94mm	158X87mm	77mm	1.0mm
TSTP33	300g	175X100mm	173X98mm	100mm	1.0mm
TSTP34	385g	217X94mm	211X88mm	77mm	1.0mm
TSTP35	450g	197X106mm	186X101mm	110mm	1.0mm
TSTP36	600g	309X91mm	300X84mm	107mm	1.0mm
TSTP37	750g	316X100mm	305X93mm	116mm	1.0mm
TSTP38	900g	327X106mm	316X100mm	122mm	1.0mm
TSTP39	1000g	327X121mm	312X119mm	120mm	1.0mm
TSTP40	1200g	370X120mm	361X116mm	125mm	1.0mm
TSTP41	1500g	450X123mm	447X120mm	130mm	1.0mm



Loaf Pan, Aluminium, Non-stick

Model		Up Inside	Bottom Inside	Height	Thickness
TSTP42	250g	164X94mm	158X87mm	77mm	1.0mm
TSTP43	300g	175X100mm	173X98mm	100mm	1.0mm
TSTP44	385g	217X94mm	211X88mm	77mm	1.0mm
TSTP45	450g	197X106mm	186X101mm	110mm	1.0mm
TSTP46	600g	309X91mm	300X84mm	107mm	1.0mm
TSTP47	750g	316X100mm	305X93mm	116mm	1.0mm
TSTP48	900g	327X106mm	316X100mm	122mm	1.0mm
TSTP49	1000g	327X121mm	312X119mm	120mm	1.0mm
TSTP50	1200g	370X120mm	361X116mm	125mm	1.0mm
TSTP51	1500g	450X123mm	447X120mm	130mm	1.0mm



LOAF PAN

Industrial Custom Made Loaf Pan

Assuming the length of the toast box is "K", the numerical range of "K" can be from 60mm to 450mm.

The dimensions listed are the size of upper inside of loaf pan.

The bottom diameter is equal to the upper diameter value minus the drop value.

For example, if the width is 135mm and drop value is 3mm, thus, the bottom inner width is 132mm.

Custom
NO. Upper Inside
Length x Width x Height (mm)

1 K (drop 3) x 135 (drop 3) x 115

2 K (drop 3) x 125 (drop 5) x 96

3 K (drop 3) x 78 (drop 3) x 130

4 K (drop 2) x 127 (drop 2) x 105

5 K (drop 0) x 122.5 (drop 2.5) x 100

6 K (drop 0) x 60 (drop 0) x 60

7 K (drop 0) x 110 (drop 4) x 130

8 K (drop 2) x 50 (drop 2) x 55

9 K (drop 3) x 123 (drop 3) x 130

10 K (drop 2) x 185 (drop 2) x 135

11 K (drop 2) x 110 (drop 2) x 135

12 K (drop 2) x 115 (drop 0) x 115

13 K (drop 5) x 110 (drop 5) x 110

14 K (drop 3) x 95 (drop 4) x 75

15 K(drop 4) x 115 (drop 3) x 140

16 K (drop 5) x 130 (drop 5) x 90

17 K (drop 2) x 115 (drop 0) x 90

18 K (drop 5) x 104 (drop 4) x 100

19 K (drop 12) x 96 (drop 14) X94

20 K (drop 5) x 145 (drop 5) x 36

21 K (drop 5) x 142 (drop 5) x 130

22 K (drop 2) x 130 (drop 2) x 96

23 K (drop 5) x 120 (drop 2) x 115

24 K (drop 3) x 95 (drop 3) x 80

25 K (drop 3) x 103 (drop 3) x 98

26 K (drop 0) x 130 (drop 2) x 80

27 K (drop 2) x 100 (drop 2) x 50

28 K (drop 2) x 110 (drop 2) x 83

29 K (drop 10) x 125 (drop 5) x 50

30 K((drop 10) x 106 (drop 6) x 50

31 K (drop 18) x 101 (drop 19) x 63

32 K (drop 5) x 110 (drop 5) x 90

Custom
NO. Upper Inside
Length x Width x Height (mm)

33 K((drop 1) x 94 (drop 1) x 60

34 K (drop 2) x 140 (drop 2) x 120

35 K (drop 2) x 120 (drop 2) x 77

36 K (drop 2) x 115 (drop 2) x 135

37 K (drop 1) x 75 (drop 1) x 54

38 K (drop 2) x 110 (drop 2) x 100

39 K (drop 8) x 124 (drop 6) x 123

40 K (drop 1) x 60 (drop 1) x 90

41 K (drop 2) x 110 (drop 2) x 90

42 K (drop 10) x 105 (drop 4) x 94

43 K (drop 0) x 130 (drop 0) x 110

44 K (drop 3) x 93 (drop 2) x 80

45 K (drop 2) x 130 (drop 2) x 137

46 K (drop 2) x 140 (drop 2) x 115

47 K (drop 2) x 120 (drop 6) x 100

48 K (drop 3) x 93 (drop 0) x 93

49 K (drop 2) x 100 (drop 2) x 105

50 K (drop 5) x 170 (drop 6) x 55

51 K (drop 5) x 185 (drop 5) x 55

52 K (drop 2) x 115 (drop 2) x 70

53 K (drop 5) x 90 (drop 5) x 100

54 K (drop 2) x 110 (drop 2) x 95

55 K (drop 1) x 80 (drop 0) x 80.5

56 K (drop 1) x 75 (drop 1) x 75

57 K (drop 3) x 80 (drop 2) x 95

58 K (drop 1) x 80 (drop 5) X 75

59 K (drop 2) x 115 (drop 2) x 72

60 K (drop 1) x 125 (drop 1) x 90

61 K (drop 2) x 90 (drop 6) x 70

62 K (drop 5) x 82 (drop 5) x 60

63 K (drop 20) x 108 (drop 13) x 91

64 K (drop 2) x 97 (drop 1) x 100

Industrial Custom Made Loaf Pan

Assuming the length of the toast box is "K", the numerical range of "K" can be from 60mm to 450mm.

The dimensions listed are the size of upper inside of loaf pan.

The bottom diameter is equal to the upper diameter value minus the drop value.

For example, if the width is 135mm and drop value is 3mm, thus, the bottom inner width is 132mm.

Custom
NO. Upper Inside
Length x Width x Height (mm)

65 K (drop 2) x 100 (drop 2) x 100
66 K (drop 13) x 95 (drop 6) x 63.5
67 K (drop 2) x 105 (drop 2) x 83
68 K (drop 5) x 105 (drop 5) x 70
69 K (drop 2) x 130 (drop 2) x 118
70 K (drop 2) x 72 (drop 2) x 74
71 K (drop 2) x 140 (drop 2) x 45
72 K (drop 3) x 80 (drop 3) x 115
73 K (drop 0) x 118 (drop 0) x 108
74 K (drop 0) x 130 (drop 0) x 124
75 K (drop 11) x 140 (drop 13) x 108
76 K (drop 5) x 100 (drop 5) x 70
77 K (drop 2) x 67 (drop 2) x 67
78 K (drop 2) x 88 (drop 2) x 55
79 K (drop 2) x 88 (drop 2) x 55
80 K (drop 2) x 120 (drop 2) x 90
81 K (drop 2) x 85 (drop 2) x 70
82 K (drop 2) x 122.5 (drop 2) x 120
83 K (drop 2) x 111.1 (drop 2) x 95.3
84 K (drop 3) x 148 (drop 3) x 35
85 K (drop 8) x 100 (drop 8) x 35
86 K (drop 2) x 110 (drop 2) x 65
87 K (drop 3) x 111 (drop 6) x 120
88 K (drop 2) x 118 (drop 2) x 76
89 K (drop 0) x 72 (drop 0) x 73
90 K (drop 0) x 105 (drop 0) x 52.5
91 K (drop 2) x 125 (drop 2) x 83
92 K (drop 2) x 56 (drop 2) x 50
93 K (drop 2) x 100 (drop 2) x 116
94 K (drop 2) x 108 (drop 2) x 90
95 K (drop 3) x 116 (drop 3) x 100
96 K (drop 1) x 70 (drop 1) x 80

Custom
NO. Upper Inside
Length x Width x Height (mm)

97 K (drop 2) x 85 (drop 2) x 105
98 K (drop 2) x 130 (drop 2) x 75
99 K (drop 4) x 105 (drop 2) x 115
100 K (drop 2) x 120 (drop 2) x 130
101 K (drop 0) x 115 (drop 0) x 101
102 K (drop 2) x 110 (drop 2) x 120
103 K (drop 2) x 126 (drop 2) x 135
104 K (drop 25) x 383 (drop 18) x 110
105 K (drop 5) x 110 (drop 3) x 113.5
106 K (drop 2) x 50 (drop 2) x 50
107 K (drop 10) x 125 (drop 7) x 110
108 K (drop 1) x 85 (drop 2) x 85
109 K (drop 2) x 85 (drop 2) x 85
110 K (drop 11) x 100 (drop 2) x 95
111 K (drop 2) x 113 (drop 12) x 113
112 K (drop 3) x 130 (drop 3) x 130
113 K (drop 3) x 120 (drop 5) x 110
114 K (drop 2) x 120 (drop 2) x 110
115 K (drop 3) x 113 (drop 3) x 132
116 K (drop 2) x 117 (drop 2) x 120
117 K (drop 2) x 118 (drop 2) x 80
118 K (drop 5) x 115 (drop 5) x 90
119 K (drop 2) x 108 (drop 2) x 80
120 K (drop 5) x 80 (drop 0) x 70
121 K (drop 3) x 105 (drop 2) x 108
122 K (drop 2) x 110 (drop 2) x 78
123 K (drop 2) x 133 (drop 2) x 105
124 K (drop 2) x 120 (drop 2) x 80

LOAF PAN

More Single Loaf Pan



Loaf Pan, Aluminum, Corrugated

Model	Size	Thickness
TSTP52	100X100X50 mm	1.0 mm
TSTP53	118x60x92 mm	1.0 mm
TSTP54	177X60X92 mm	1.0 mm
TSTP55	180X60X60 mm	1.0 mm
TSTP56	187X117X60 mm	1.0 mm
TSTP57	254X84X55 mm	1.0 mm



Loaf Pan, Aluminum, Non-stick

Model	Size	Thickness
TSTP61	370X83X50 mm	1.0 mm



Loaf Pan, Full-perforated, Non-stick

Model	Size	Thickness
TSTP64	118x60x92 mm	1.0 mm



U-shape Toast Mold, Alusteel, Non-stick

Model	Size	Thickness
TSTP58	150X50X50 mm	1.2 mm
TSTP59	245X40X40 mm	1.2 mm
TSTP60	200X50X40 mm	1.2 mm



Loaf Pan, Aluminum, Corrugated

Model	Size	Thickness
TSTP62	370X83X50 mm	1.0 mm



Toast Mold, Alusteel, Non-stick

Model	Size	Thickness
TSTP63	100x100x23 mm	1.2 mm



Square Loaf Pan, Aluminium

Model	Size	Thickness
TSTP65	60X60X60 mm	1.2 mm
TSTP66	100X100X100 mm	1.2 mm



Square Loaf Pan, Aluminium, Corrugated

Model	Size	Thickness
TSTP67	60X60X60 mm	1.2 mm
TSTP68	100X100X100 mm	1.2 mm



Square Loaf Pan, Aluminum, Anodized

Model	Size	Thickness
TSTP69	60X60X60 mm	1.2 mm
TSTP70	70x70x70 mm	1.2 mm
TSTP71	80X80X80 mm	1.2 mm
TSTP72	90X90X90 mm	1.2 mm
TSTP73	100X100X100 mm	1.2 mm



Square Loaf Pan, Aluminum, Anodized Perforated

Model	Size	Thickness
TSTP74	60X60X60 mm	1.2 mm
TSTP75	70x70x70 mm	1.2 mm
TSTP76	80X80X80 mm	1.2 mm
TSTP77	90X90X90 mm	1.2 mm
TSTP78	100X100X100 mm	1.2 mm



Square Loaf Pan, Aluminum Double-sided Non-stick

Model	Size	Thickness
TSTP79	60X60X60 mm	1.2 mm
TSTP80	70x70x70 mm	1.2 mm
TSTP81	80X80X80 mm	1.2 mm
TSTP82	90X90X90 mm	1.2 mm
TSTP83	100X100X100 mm	1.2 mm



Square Loaf Pan, Aluminium, Non-stick

Model	Size	Thickness
TSTP84	100x100x100 mm	1.0 mm



450g Loaf Pan, Double-sided Non-stick

Model	Size	Thickness
TSTP85	balck 196X107X110 mm	1.2 mm
TSTP86	golden196X107X110 mm	1.2 mm



One-piece Molded 450g Loaf Pan Aluminium, Double-side Non-stick

Model	Size	Thickness
TSTP87	194x100x110 mm	1.0 mm



Perforated Loaf Pan, Alusteel, Natural

Model	Size	Thickness
TSTP88	316x100x116mm	0.7 mm



Perforated Loaf Pan, Aluminium, Natural

Model	Size	Thickness
TSTP89	316x100x116mm	0.7 mm

LOAF PAN

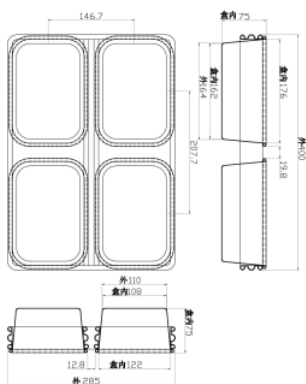
Customize
Strap Loaf Pan



Alusteel Farmhouse Loaf Pan

Model	TSTP101
External size	400x285mm
Single box	176x122x75mm
Thickness	0.8/1.0mm

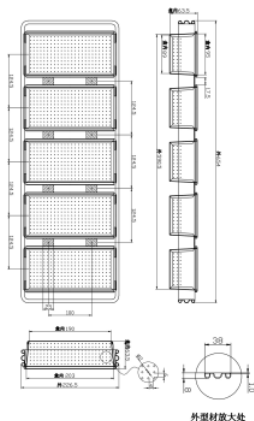
Design chart as following



5-strap Alusteel Perforated Loaf Pan

Model	TSTP102
External size	654x226.5mm
Single box	203x95x63.5mm
Thickness	0.8/1.0/2.3mm

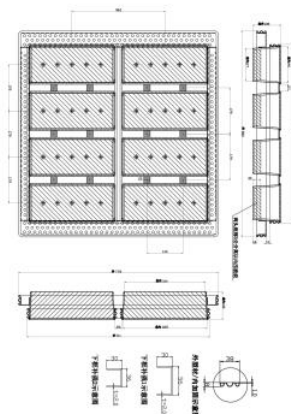
Design chart as following



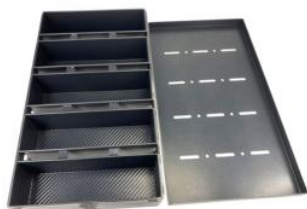
8-strap Alusteel Corrugated Loaf Pan

Model	TSTP103
External size	800x711mm
Single box	325x140x108mm
Thickness	0.7/1.0/2.0/2.3mm

Design chart as following



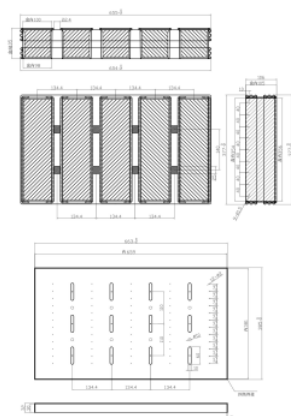
Customize Strap Loaf Pan



5-strap Alusteel Loaf Pan with Lid

Model	TSTP104
External size	663x385mm
Single box	356x100x105mm
Thickness	0.7/1.0/2.0mm

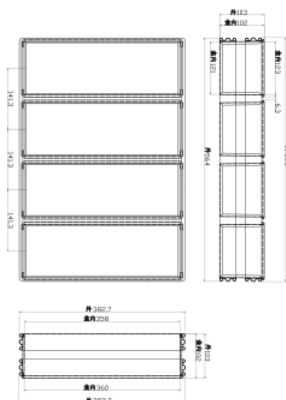
Design chart as following



4-strap Alusteel Non Stick Loaf Pan

Model	TSTP105
External size	565x383mm
Single box	360x123x102mm
Thickness	0.6/1.0mm

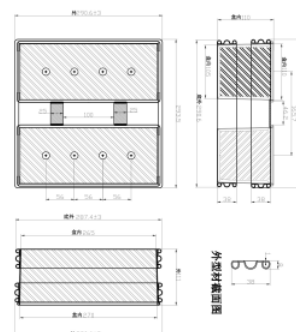
Design chart as following



2-strap Alusteel Non-stick Loaf Pan

Model	TSTP106
External size	293x290mm
Single box	270x110x110mm
Thickness	0.7/1.0/2.3mm

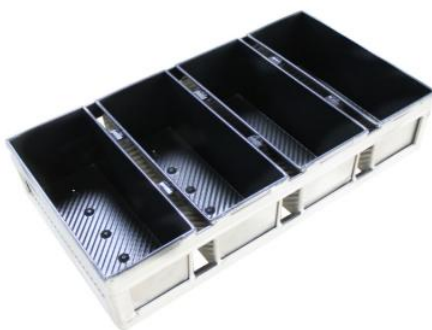
Design chart as following



LOAF PAN

8 Strap Loaf Pan

Model	TSTP107
External Size	600X800 mm
Internal Size	Upper 370X110 mm
	Bottom 368X108mm
	Height 90 mm
Frame Thickness	1.2 mm stainless steel
Internal Thickness	1.0 mm aluminum alloy



5 Strap Loaf Pan

Model	TSTP109
External Size	720X390X158 mm
Internal Size	Upper 370X110 mm
	Bottom 368X108 mm
	Height 83 mm
Frame Thickness	2.0mm aluminum alloy
Internal Thickness	1.0mm aluminum alloy

4 Strap Loaf Pan

Model	TSTP108
External Size	600X400 mm
Internal Size	Upper 370X110 mm
	Bottom 368X108mm
	Height 83 mm
Frame Thickness	5.0 mm aluminum alloy
Internal Thickness	1.0 mm aluminum alloy



10 Strap Loaf Pan

Model	TSTP110
External Size	758X585x115 mm
Internal Size	Upper 267X107 mm
	Bottom 257X97 mm
	Height 80 mm
Frame Thickness	1.0 mm alusteel
Internal Thickness	0.6 mm alusteel

4 Strap Loaf Pan

Model	TSTP111
External Size	600X400 mm
Internal Size	Upper 370X110 mm
	Bottom 368X108mm
	Height 83 mm
Frame Thickness	2.5 mm aluminum alloy
Internal Thickness	1.0 mm aluminum alloy

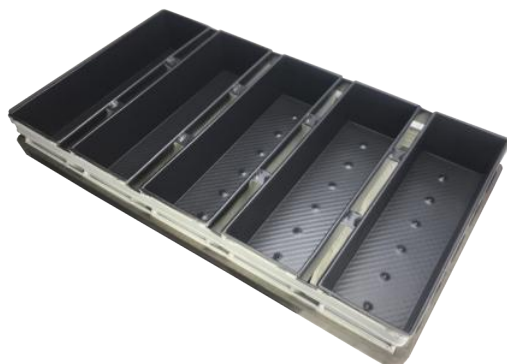


10 Strap Loaf Pan

Model	TSTP112
External Size	600X400 mm
Internal Size	Upper 267X107 mm
	Bottom 257X97 mm
	Height 83 mm
Frame Thickness	2.5 mm aluminium
Internal Thickness	1.0 mm aluminium

5 Strap Pocket Loaf Pan With Cover

Model	TSTP113
External Size	720X385X158 mm
Internal Size	Upper 366X115mm
	Bottom 362X112mm
	Height 140mm
Frame Thickness	2.0mm aluminum alloy
Internal Thickness	1.0mm aluminum alloy
Cover Thickness	2.5mm aluminum alloy



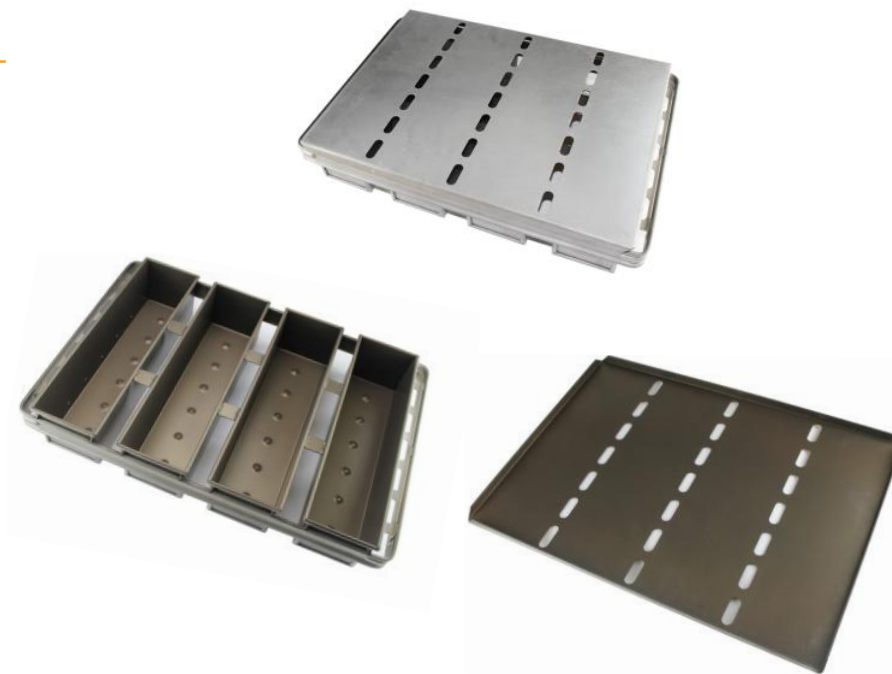
5 Strap Corrugated Loaf Pan With Cover

Model	TSTP114
External Size	694x400x100mm
Internal Size	Upper 370x110mm
	Bottom 368x108mm
	Height 95 mm
Frame Thickness	1.2mm stainless steel
Internal Thickness	1.0 mm stainless steel

LOAF PAN

4 Strap Loaf Pan (Aluminized Steel)

Model	TSTP115
External Size	600X400x100 mm
Internal Size	Upper 370x100 mm Bottom 365x100 mm Height 100 mm
Internal Thickness	0.7 mm alusteel
Cover Thickness	2.5 mm alusteel
Surface Finish	Teflon Coating



7 Strap Loaf Pan (Aluminized Steel)

Model	TSTP116
External Size	580X380X60 mm
Internal Size	370X70X55 mm
Internal Thickness	0.7 mm alusteel
Cover Thickness	2.0mm alusteel
Surface Finish	Teflon Coating



Customized information :

Materials Loaf pan material and cover materials

Thickness Loaf pan/cover

Size 1. External size of the loaf pan
2. The internal size of single loaf pan

Workmanship 1. Strap quantity and spacing size
2. Whether with cover (single cover or overall cover)
3. Surface finish (natural or Non-stick coating)
4. Other requirements

**Custom Made
Industrial Multiple Cavities Strap Loaf Pan**

The pictures are for reference only. All strap loaf pan can be designed and customized as needed

LOAF PAN

